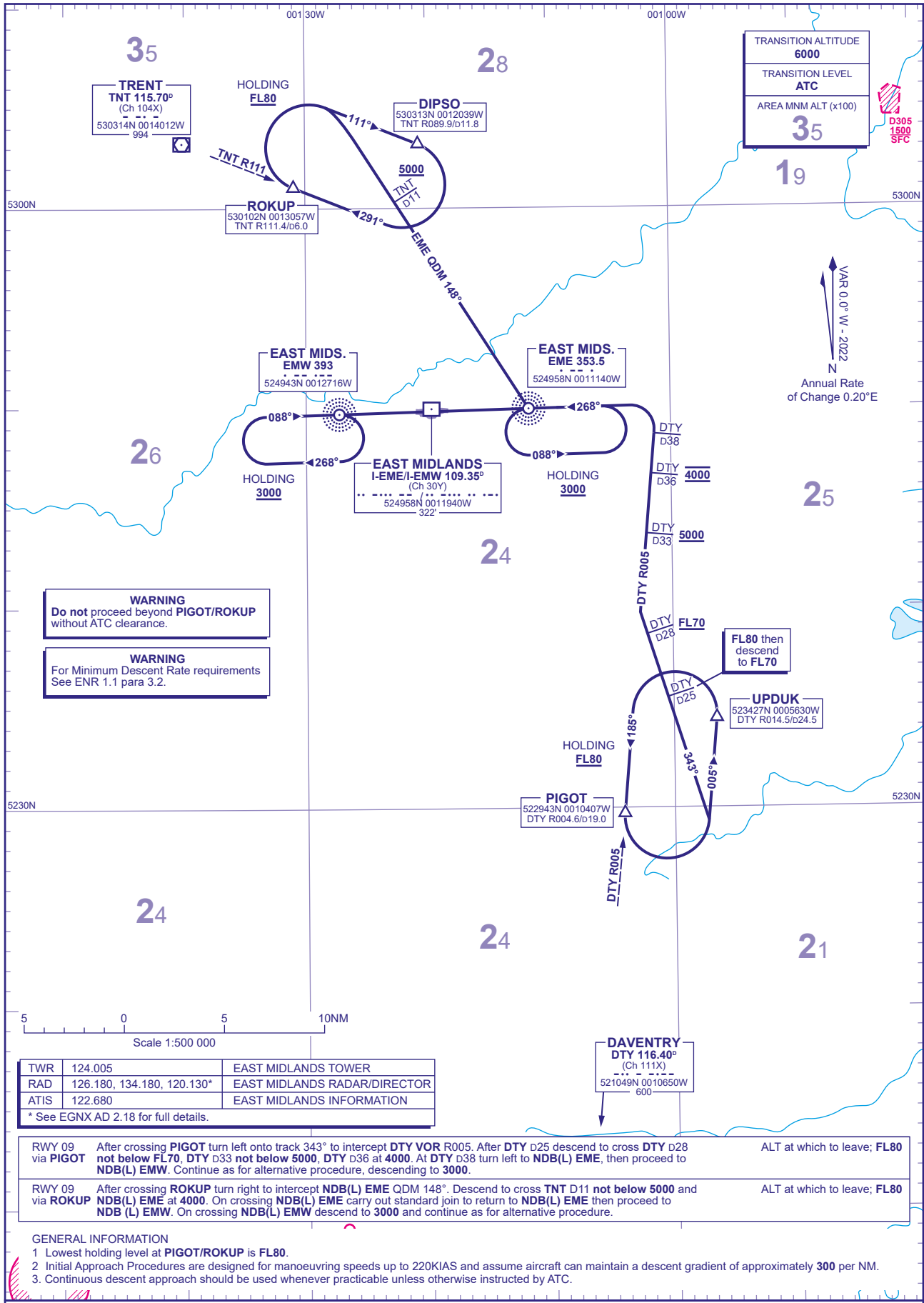


INITIAL APPROACH PROCEDURES ILS/DME RWY 09 Without Radar Control

DISTANCES IN NAUTICAL MILES
BEARINGS, TRACKS AND RADIALS ARE MAGNETIC
ALTITUDES AND ELEVATIONS ARE IN FEET

EAST MIDLANDS via PIGOT/ROKUP



TRANSITION ALTITUDE	6000
TRANSITION LEVEL	ATC
AREA MNM ALT (x100)	35

D305
1500
SFC

VAR 0.0° W - 2022
N
Annual Rate of Change 0.20° E

WARNING
Do not proceed beyond PIGOT/ROKUP without ATC clearance.

WARNING
For Minimum Descent Rate requirements See ENR 1.1 para 3.2.

TWR	124.005	EAST MIDLANDS TOWER
RAD	126.180, 134.180, 120.130*	EAST MIDLANDS RADAR/DIRECTOR
ATIS	122.680	EAST MIDLANDS INFORMATION

* See EGNX AD 2.18 for full details.

RWY 09 via PIGOT	After crossing PIGOT turn left onto track 343° to intercept DTY VOR R005. After DTY D25 descend to cross DTY D28 not below FL70, DTY D33 not below 5000, DTY D36 at 4000. At DTY D38 turn left to NDB(L) EME, then proceed to NDB(L) EMW. Continue as for alternative procedure, descending to 3000.	ALT at which to leave; FL80
RWY 09 via ROKUP	After crossing ROKUP turn right to intercept NDB(L) EME QDM 148°. Descend to cross TNT D11 not below 5000 and NDB(L) EME at 4000. On crossing NDB(L) EME carry out standard join to return to NDB(L) EME then proceed to NDB(L) EMW. On crossing NDB(L) EMW descend to 3000 and continue as for alternative procedure.	ALT at which to leave; FL80

GENERAL INFORMATION

- Lowest holding level at PIGOT/ROKUP is FL80.
- Initial Approach Procedures are designed for manoeuvring speeds up to 220KIAS and assume aircraft can maintain a descent gradient of approximately 300 per NM.
- Continuous descent approach should be used whenever practicable unless otherwise instructed by ATC.