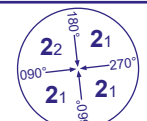


**INSTRUMENT APPROACH - ICAO**

**LONDON HEATHROW**

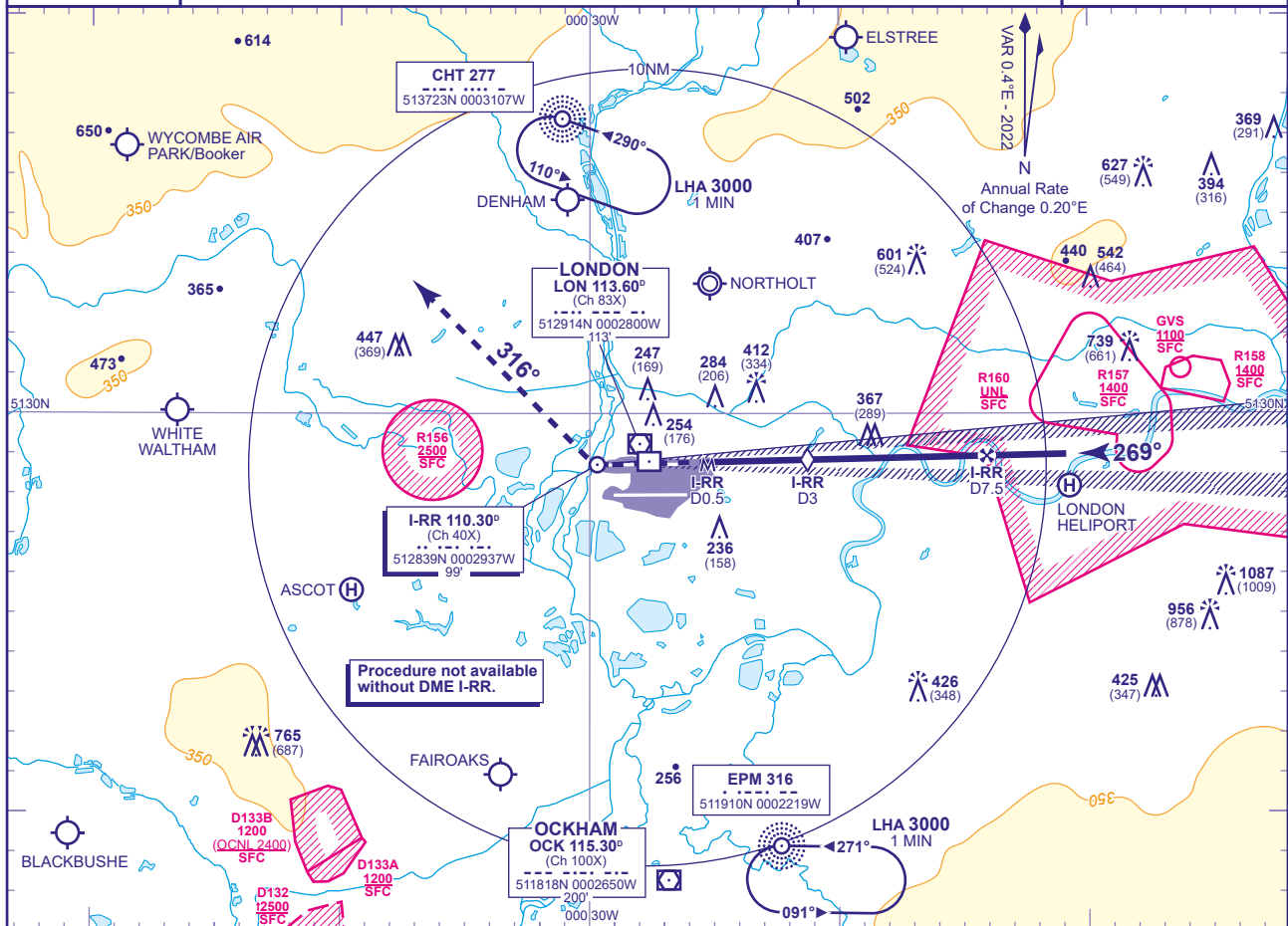
**LOC/DME I-RR  
RWY 27R  
(ACFT CAT A,B,C,D)**



MSA 25NM LON VOR

APP 119.730, 120.400, 127.525, 134.980	HEATHROW DIRECTOR	AD ELEVATION <b>83</b>
TWR 118.505, 118.705, 124.475	HEATHROW TOWER	THR ELEVATION <b>78</b>
RAD 125.625, 127.525	HEATHROW RADAR	OBSTACLE ELEVATION <b>1087 AMSL</b> (1009) (ABOVE THR)
ATIS 128.080, 113.750, 117.000	HEATHROW INFORMATION	BEARINGS ARE MAGNETIC

TRANSITION ALTITUDE  
**6000**



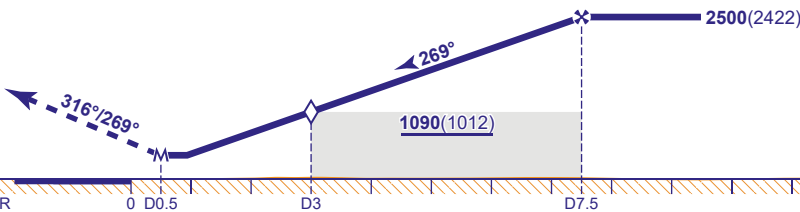
**RECOMMENDED PROFILE** Gradient 5.2%, 318FT/NM

<b>DME I-RR</b>	7	6	5	4	3 (SDF)	2	1
<b>ALT(HGT)</b>	<b>2370(2292)</b>	<b>2050(1972)</b>	<b>1730(1652)</b>	<b>1410(1332)</b>	<b>1090(1012)</b>	<b>770(692)</b>	<b>450(372)</b>

**MAPt I-RR DME 0.5**

Climb to **3000** - straight ahead until passing **1580** or **I-RR DME zero** inbound whichever is later, turn right onto track **316°**. Continue as directed.

**RADIO FAILURE:** On passing **LON DME 10** turn right to **NDB CHT** at **3000**.



I-RR DME zero ranged to THR RWY 27R

<b>Aircraft Category</b>		<b>A</b>	<b>B</b>	<b>C</b>	<b>D</b>	<b>Rate of descent</b>	<b>G/S KT</b>	160	140	120	100	80
<b>OCA (OCH)</b>	<b>Procedure</b>	<b>640(562)</b>	<b>640(562)</b>	<b>640(562)</b>	<b>640(562)</b>		<b>FT/MIN</b>	850	740	640	530	420
<b>VM(C)OCA (OCH AAL)</b>	<b>Total Area</b>	<b>770(687)</b>	<b>770(687)</b>	<b>870(787)</b>	<b>870(787)</b>							

**NOTES** 1 Aircraft will normally be radar vectored from the STAR Holding/Initial Approach Fixes.  
2 All pilots must follow and adhere to recommended profiles.

**CHANGE (9/23):** LON VOR/DME ELEVATION REVISED.