

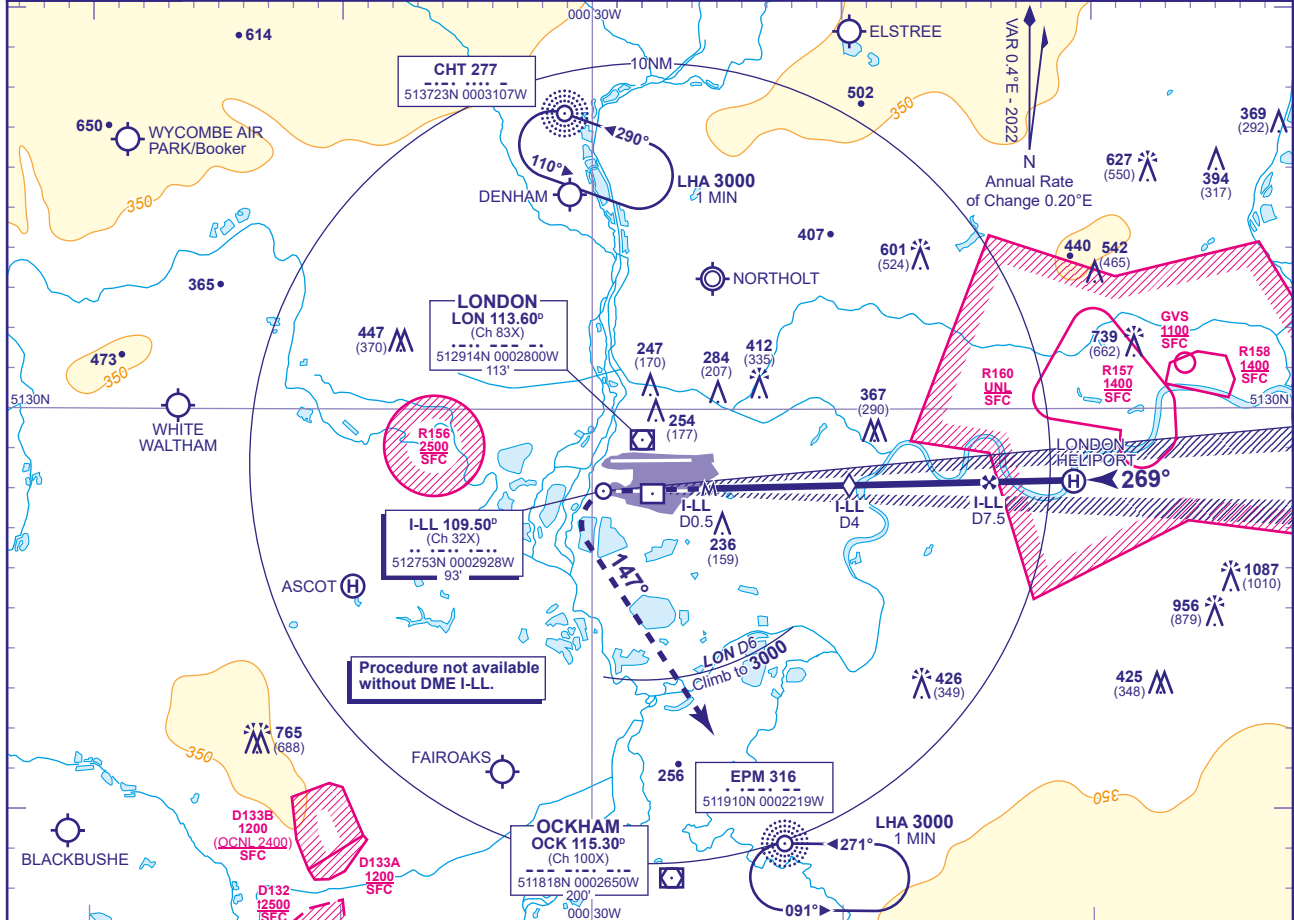
INSTRUMENT APPROACH - ICAO

LONDON HEATHROW

LOC/DME I-LL RWY 27L (ACFT CAT A,B,C,D)



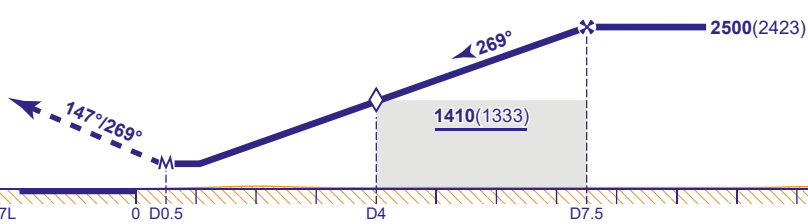
APP 119.730, 120.400, 127.525, 134.980	HEATHROW DIRECTOR	AD ELEVATION	83
TWR 118.505, 118.705, 124.475	HEATHROW TOWER	THR ELEVATION	77
RAD 125.625, 127.525	HEATHROW RADAR	OBSTACLE ELEVATION	1087 AMSL (1010) (ABOVE THR)
ATIS 128.080, 113.750, 117.000	HEATHROW INFORMATION	BEARINGS ARE MAGNETIC	TRANSITION ALTITUDE 6000



RECOMMENDED PROFILE Gradient 5.2%, 318FT/NM

DME I-LL	7	6	5	4 (SDF)	3	2
ALT(HGT)	2360(2283)	2040(1963)	1730(1653)	1410(1333)	1090(1013)	770(693)

MAPt I-LL DME 0.5
 Climb to 2000 - straight ahead until passing 1080 or I-LL DME zero inbound whichever is later, then left onto track 147°. When established and passing LON DME 6 climb to 3000 without delay. Continue as directed.
 RADIO FAILURE: On reaching 3000 proceed to NDB EPM at 3000.



I-LL DME zero ranged to THR RWY 27L 0 D0.5 D4 D7.5

Aircraft Category		A	B	C	D	Rate of descent	G/S KT	160	140	120	100	80
OCA (OCH)	Procedure	640(563)	640(563)	640(563)	640(563)		FT/MIN	850	740	640	530	420
VM(C)OCA (OCH AAL)	Total Area	770(687)	770(687)	870(787)	870(787)							

NOTE Aircraft will normally be radar vectored from the STAR Holding/Initial Approach Fixes.

CHANGE (9/23): LON VOR/DME ELEVATION REVISED.