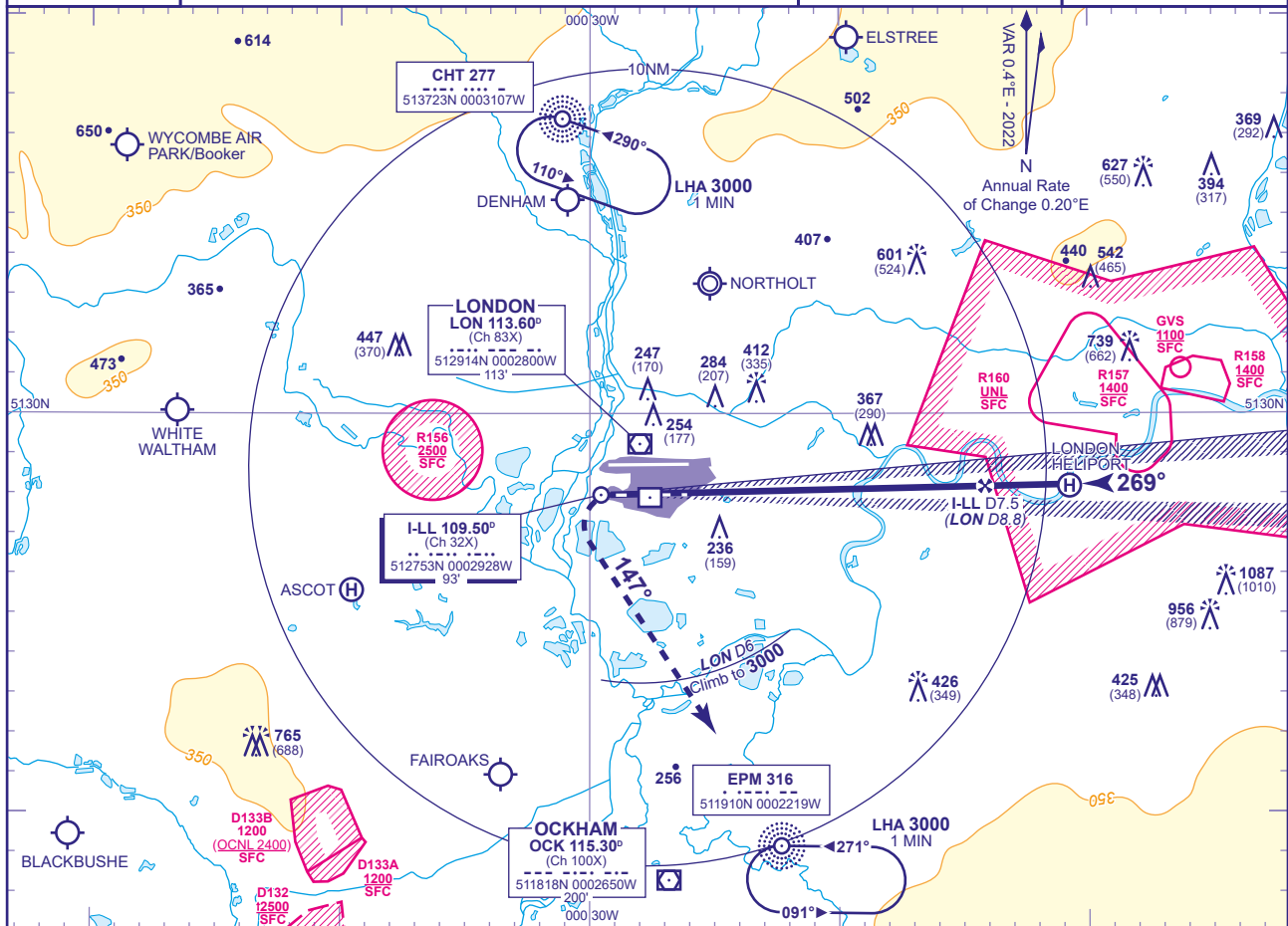


MSA 25NM LON VOR

| | | | |
|--|----------------------|-----------------------|---------------------------------|
| APP 119.730, 120.400, 127.525, 134.980 | HEATHROW DIRECTOR | AD ELEVATION | 83 |
| TWR 118.505, 118.705, 124.475 | HEATHROW TOWER | THR ELEVATION | 77 |
| RAD 125.625, 127.525 | HEATHROW RADAR | OBSTACLE ELEVATION | 1087 AMSL (1010) (ABOVE THR) |
| ATIS 128.080, 113.750, 117.000 | HEATHROW INFORMATION | BEARINGS ARE MAGNETIC | |
| | | | TRANSITION ALTITUDE |
| | | | 6000 |

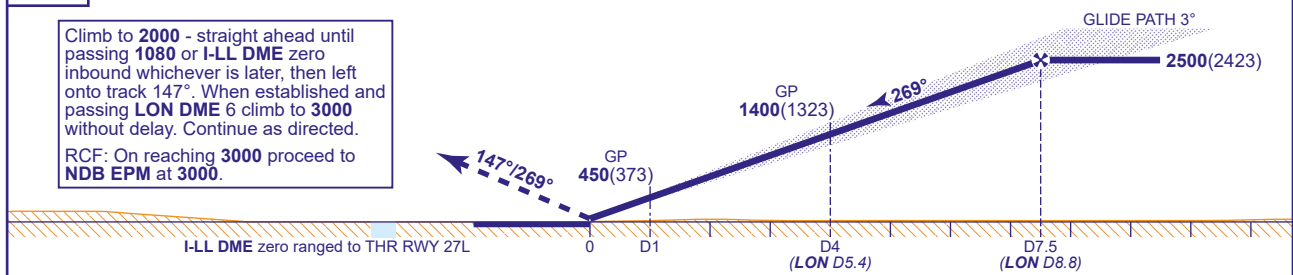


RECOMMENDED PROFILE GLIDE PATH 3°, 318FT/NM

| | | | | | | | |
|----------|------------|------------|------------|------------|------------|----------|----------|
| DME I-LL | 7 | 6 | 5 | 4 | 3 | 2 | 1 |
| ALT(HGT) | 2360(2283) | 2040(1963) | 1730(1653) | 1410(1333) | 1090(1013) | 770(693) | 450(373) |

RDH 56

Climb to 2000 - straight ahead until passing 1080 or I-LL DME zero inbound whichever is later, then left onto track 147°. When established and passing LON DME 6 climb to 3000 without delay. Continue as directed.
RCF: On reaching 3000 proceed to NDB EPM at 3000.



| Aircraft Category | | Aircraft Category | | | | Rate of descent | Rate of descent | | | | |
|--------------------|------------|-------------------|----------|----------|----------|-----------------|-----------------|-----|-----|-----|-----|
| | | A | B | C | D | | G/S KT | 160 | 140 | 120 | 100 |
| OCA (OCH) | CAT I | 229(152) | 238(161) | 252(175) | 270(193) | FT/MIN | 850 | 740 | 640 | 530 | 420 |
| | CAT II | 137(60) | 146(69) | 159(82) | 174(97) | | | | | | |
| VM(C)OCA (OCH AAL) | Total Area | 770(687) | 770(687) | 870(787) | 870(787) | | | | | | |

AIRCRAFT UNABLE TO RECEIVE DME I-LL
Advise ATC. Equivalent radar ranges will be provided when established on the localiser approaching the nominal FAP and 4NM points.

NOTES
1 Aircraft will normally be radar vectored from the STAR Holding/Initial Approach Fixes.
2 Ranging information is provided by ILS-dedicated DME facilities. DME values derived to the nearest 0.1NM from VOR DME LON are also provided for the FAP and 4NM check altitude/heights.