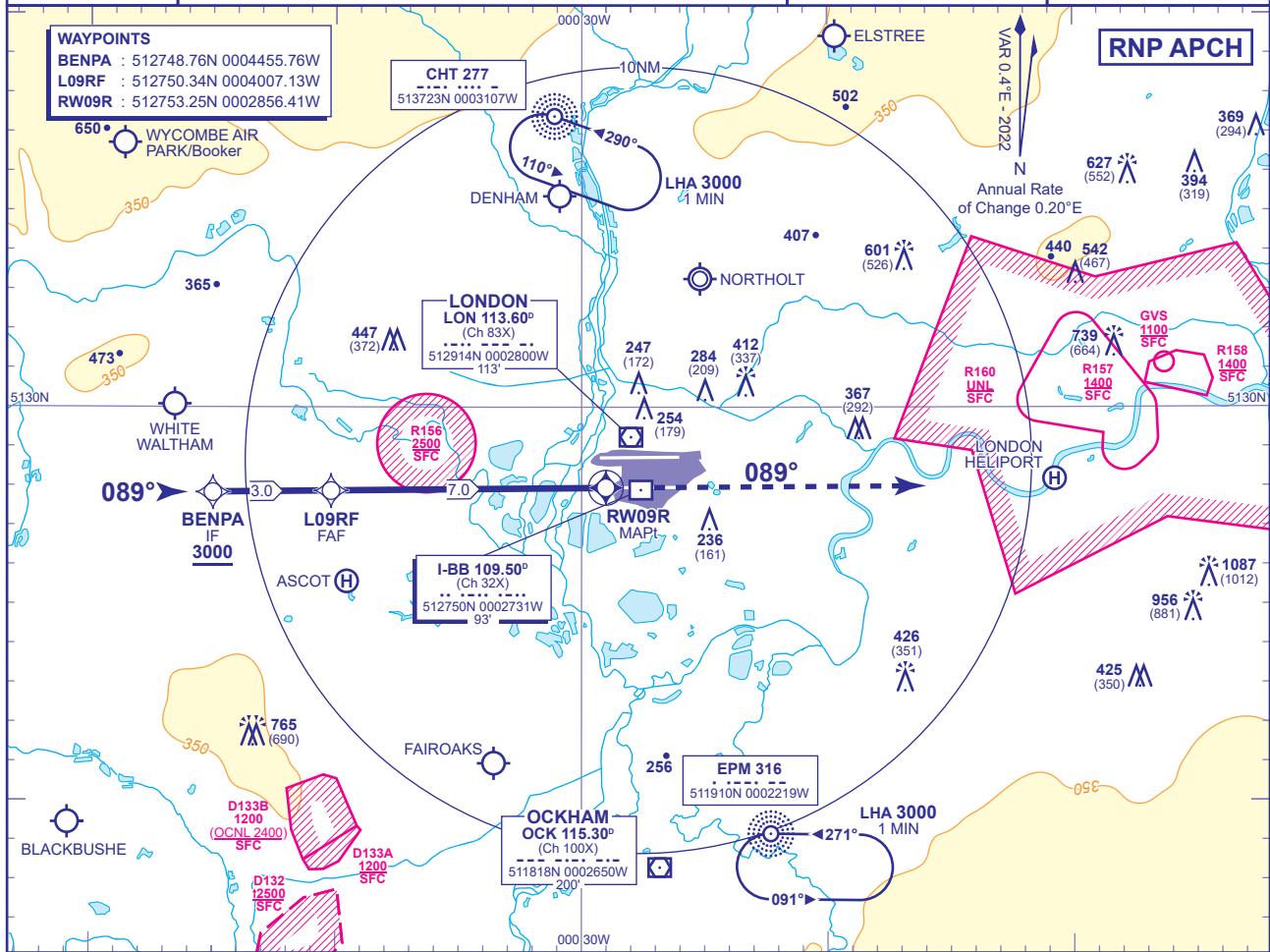


23  
MSA 25NM ARP

APP 119.730, 120.400, 127.525, 134.980	HEATHROW DIRECTOR	AD ELEVATION	83
TWR 118.505, 118.705, 124.475	HEATHROW TOWER	THR ELEVATION	75
RAD 125.625, 127.525	HEATHROW RADAR	OBSTACLE ELEVATION	1087 AMSL (1012) (ABOVE THR)
ATIS 128.080, 113.750, 117.000	HEATHROW INFORMATION	BEARINGS ARE MAGNETIC	

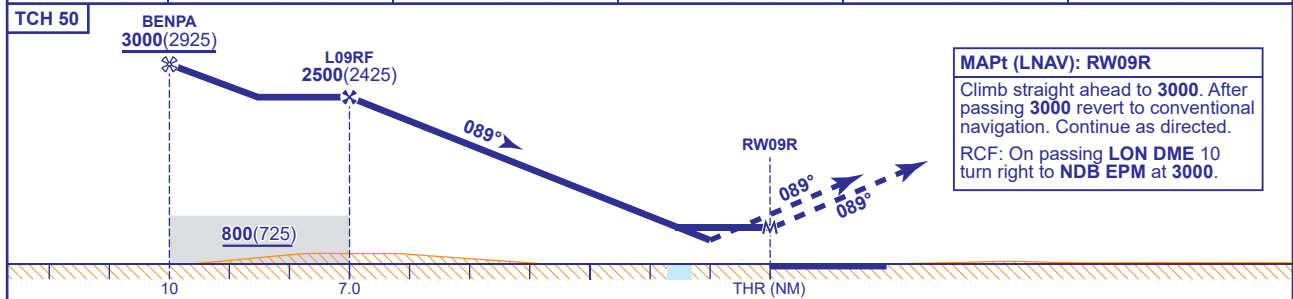
RNP  
RWY 09R  
(ACFT CAT A,B,C,D)

MIN TEMP -10°C
TRANSITION ALTITUDE 6000



RECOMMENDED PROFILE VERTICAL PATH ANGLE 3.2° (5.6%), 340FT/NM

NM to RW09R	6	5	4	3	2
ALT(HGT)	2160(2085)	1820(1745)	1480(1405)	1140(1065)	800(725)



**MAPt (LNAV): RW09R**  
Climb straight ahead to 3000. After passing 3000 revert to conventional navigation. Continue as directed.  
RCF: On passing LON DME 10 turn right to NDB EPM at 3000.

Aircraft Category		A	B	C	D	Rate of descent	G/S KT	160	140	120	100	80
		LNVA/VNAV	400(325)	410(335)	430(355)		540(465)	FT/MIN	910	790	680	570
OCA (OCH)	LNAV	620(545)	620(545)	620(545)	620(545)							
	Total Area	770(687)	770(687)	870(787)	870(787)							

**NOTES**  
 1 Pilots should 'Request RNP Approach' on first contact with Heathrow Director.  
 2 Aircraft will normally be radar vectored from the STAR Holding/Initial Approach Fixes.  
 3 Missed Approach Procedure and RCF use conventional navigation aids and are not available without DME LON and NDB EPM.  
 4 PAPI angle is 3.0°.