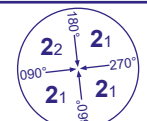


INSTRUMENT DEPARTURE - ICAO

LONDON HEATHROW

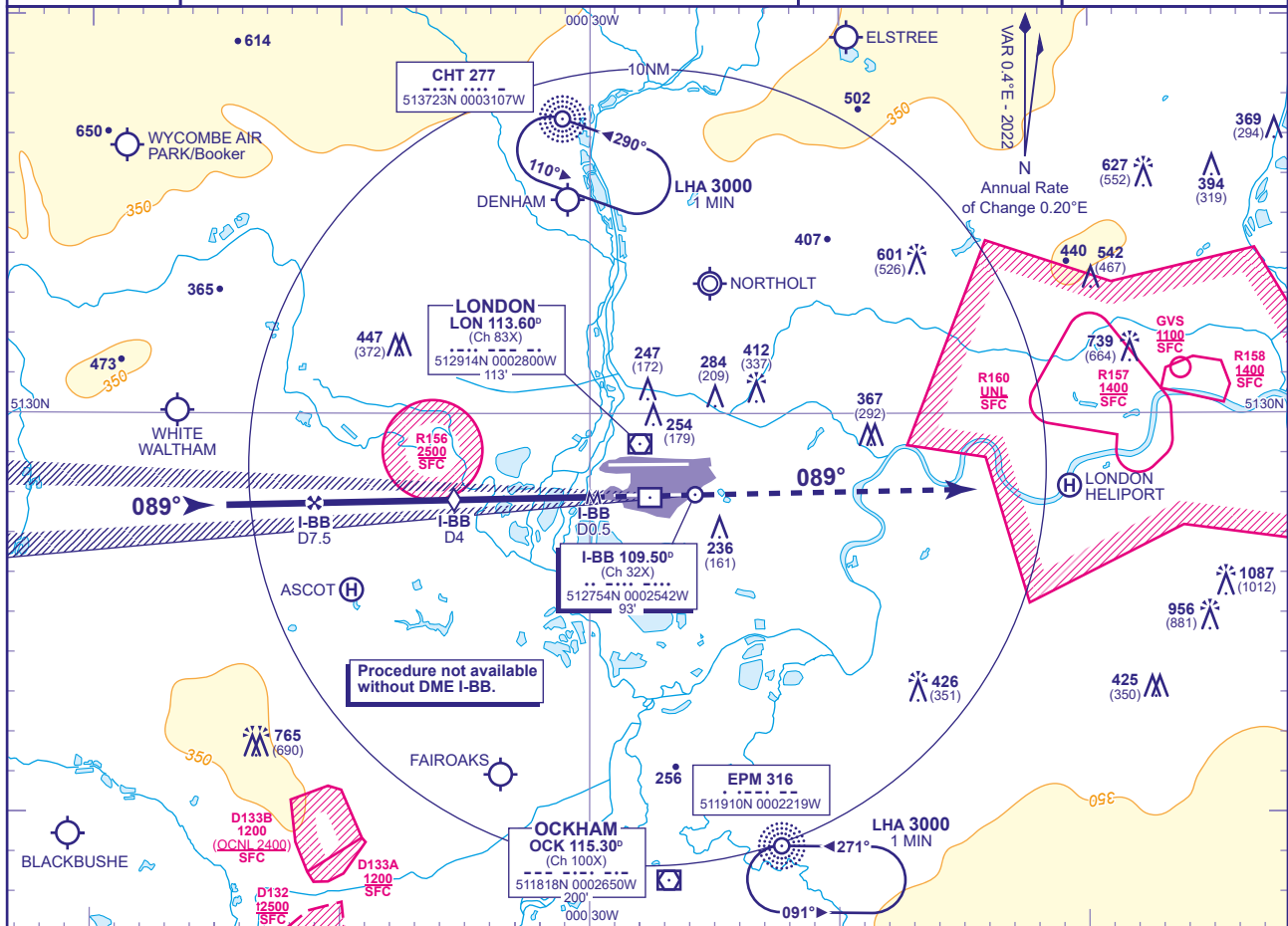
LOC/DME I-BB RWY 09R (ACFT CAT A,B,C,D)



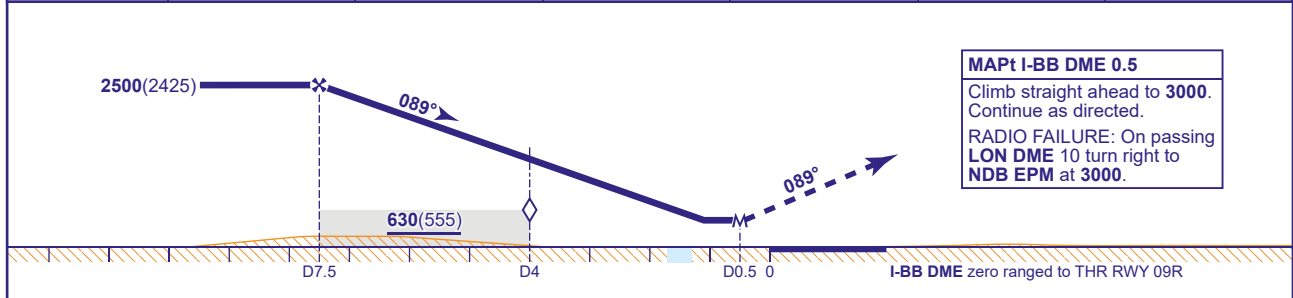
MSA 25NM LON VOR

APP 119.730, 120.400, 127.525, 134.980	HEATHROW DIRECTOR	AD ELEVATION	83
TWR 118.505, 118.705, 124.475	HEATHROW TOWER	THR ELEVATION	75
RAD 125.625, 127.525	HEATHROW RADAR	OBSTACLE ELEVATION	1087 AMSL (1012) (ABOVE THR)
ATIS 128.080, 113.750, 117.000	HEATHROW INFORMATION	BEARINGS ARE MAGNETIC	

TRANSITION ALTITUDE
6000



DME I-BB	7	6	5	4 (SDF)	3	2
ALT(HGT)	2360(2285)	2040(1965)	1720(1645)	1400(1325)	1080(1005)	760(685)



NOTE Aircraft will normally be radar vectored from the STAR Holding/Initial Approach Fixes.

CHANGE (9/23): LON VOR/DME ELEVATION REVISED.