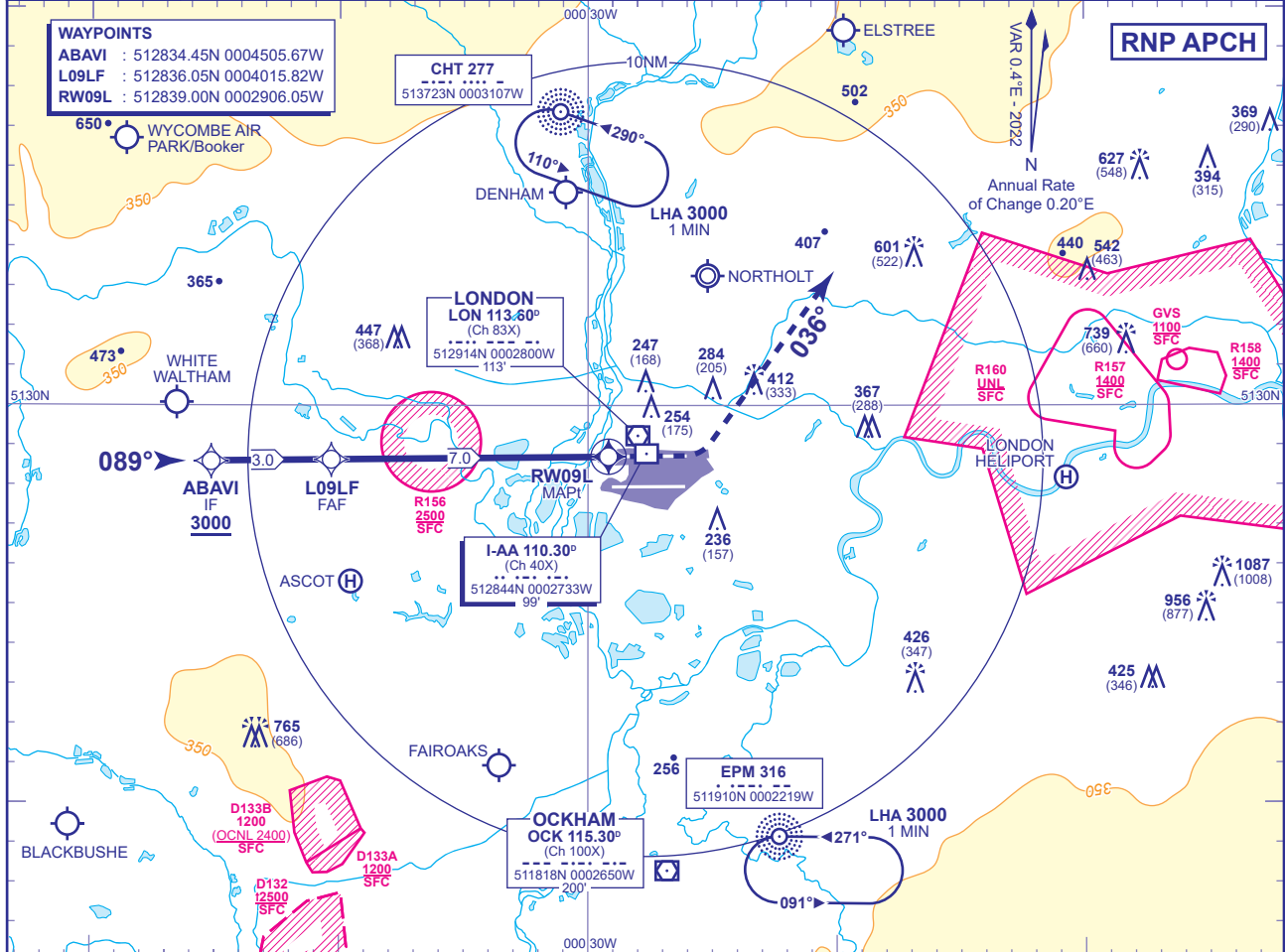


23
MSA 25NM ARP

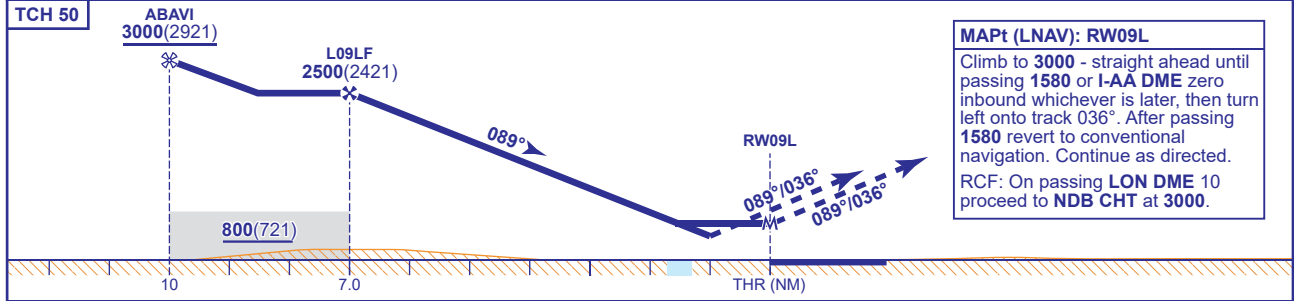
APP 119.730, 120.400, 127.525, 134.980	HEATHROW DIRECTOR	AD ELEVATION 83
TWR 118.505, 118.705, 124.475	HEATHROW TOWER	THR ELEVATION 79
RAD 125.625, 127.525	HEATHROW RADAR	OBSTACLE ELEVATION 1087 AMSL (1008) (ABOVE THR)
ATIS 128.080, 113.750, 117.000	HEATHROW INFORMATION	BEARINGS ARE MAGNETIC

RNP RWY 09L
(ACFT CAT A,B,C,D)
MIN TEMP **-10°C**
TRANSITION ALTITUDE **6000**



RECOMMENDED PROFILE VERTICAL PATH ANGLE 3.2° (5.6%), 340FT/NM

NM to RW09L	6	5	4	3	2
ALT(HGT)	2170(2091)	1830(1751)	1490(1411)	1150(1071)	810(731)



MAPt (LNAV): RW09L
Climb to **3000** - straight ahead until passing **1580** or **I-AA** DME zero inbound whichever is later, then turn left onto track **036°**. After passing **1580** revert to conventional navigation. Continue as directed.
RCF: On passing **LON** DME 10 proceed to **NDB** CHT at **3000**.

Aircraft Category	A	B	C	D	Rate of descent	G/S KT	160	140	120	100	80
OCA (OCH)	LNAV/VNAV	450(371)	460(381)	470(391)		540(461)	FT/MIN	910	790	680	570
VM(C)OCA (OCH AAL)	Total Area	770(687)	770(687)	870(787)	870(787)						

NOTES
 1 Pilots should 'Request RNP Approach' on first contact with Heathrow Director.
 2 Aircraft will normally be radar vectored from the STAR Holding/Initial Approach Fixes.
 3 Missed Approach Procedure and RCF use conventional navigation aids and are not available without DME I-AA, DME LON and NDB CHT.
 4 PAPI angle is 3.0°.