

# INSTRUMENT APPROACH CHART - ICAO

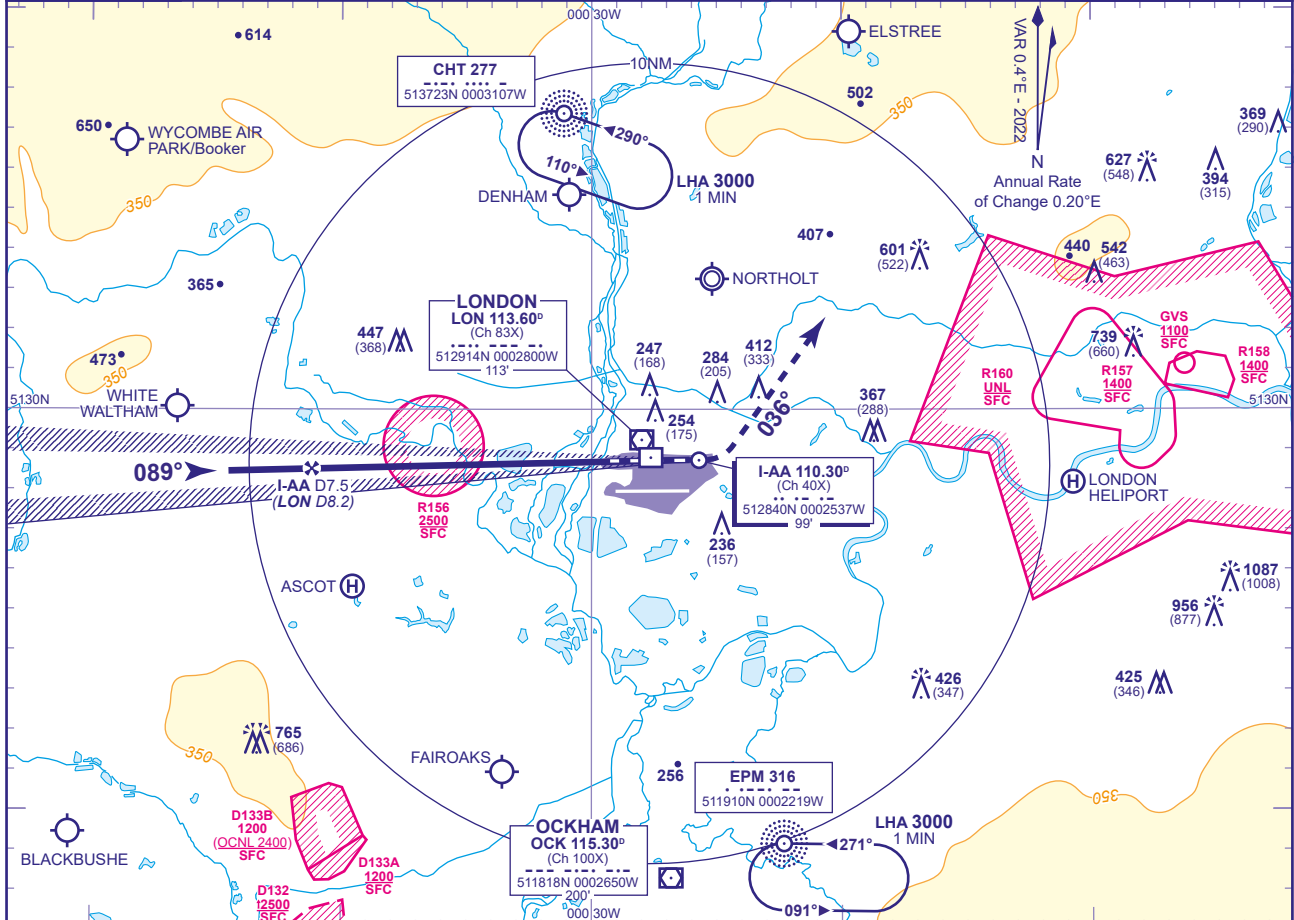
# LONDON HEATHROW

## ILS/DME I-AA RWY 09L (ACFT CAT A,B,C,D)



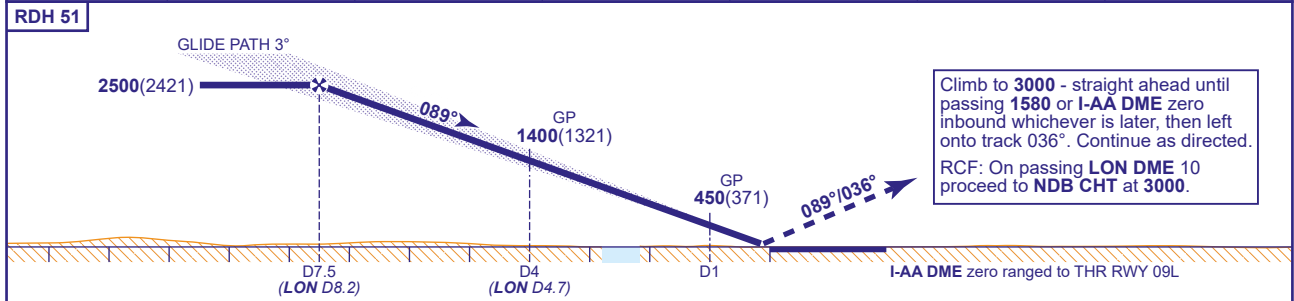
APP 119.730, 120.400, 127.525, 134.980	HEATHROW DIRECTOR	AD ELEVATION	83
TWR 118.505, 118.705, 124.475	HEATHROW TOWER	THR ELEVATION	79
RAD 125.625, 127.525	HEATHROW RADAR	OBSTACLE ELEVATION	1087 AMSL (1008) (ABOVE THR)
ATIS 128.080, 113.750, 117.000	HEATHROW INFORMATION	BEARINGS ARE MAGNETIC	

TRANSITION ALTITUDE  
**6000**



### RECOMMENDED PROFILE GLIDE PATH 3.0° 318FT/NM

DME I-AA	7	6	5	4	3	2
ALT(HGT)	2360(2281)	2040(1961)	1720(1641)	1400(1321)	1080(1001)	770(691)



Aircraft Category	A				B				C				D				Rate of descent	G/S KT				
	CAT I				CAT II				Total Area				Total Area					FT/MIN				
OCA (OCH)	222(143)				234(155)				248(169)				267(188)				850	160				
	134(55)				145(66)				158(79)				174(95)					140				
VM(C)OCA (OCH AAL)	770(687)				770(687)				870(787)				870(787)				640	120				
	770(687)				770(687)				870(787)				870(787)					100				
																	530	80				
																		420				

**AIRCRAFT UNABLE TO RECEIVE DME I-AA**  
Advise ATC. Equivalent radar ranges will be provided when established on the localiser approaching the nominal FAP and 4NM points.

- NOTES**
- Aircraft will normally be radar vectored from the STAR Holding/Initial Approach Fixes.
  - Ranging information is provided by ILS-dedicated DME facilities. DME values derived to the nearest 0.1NM from VOR DME LON are also provided for the FAP and 4NM check altitude/height.

CHANGE (9/23): LON VOR/DME ELEVATION REVISED.