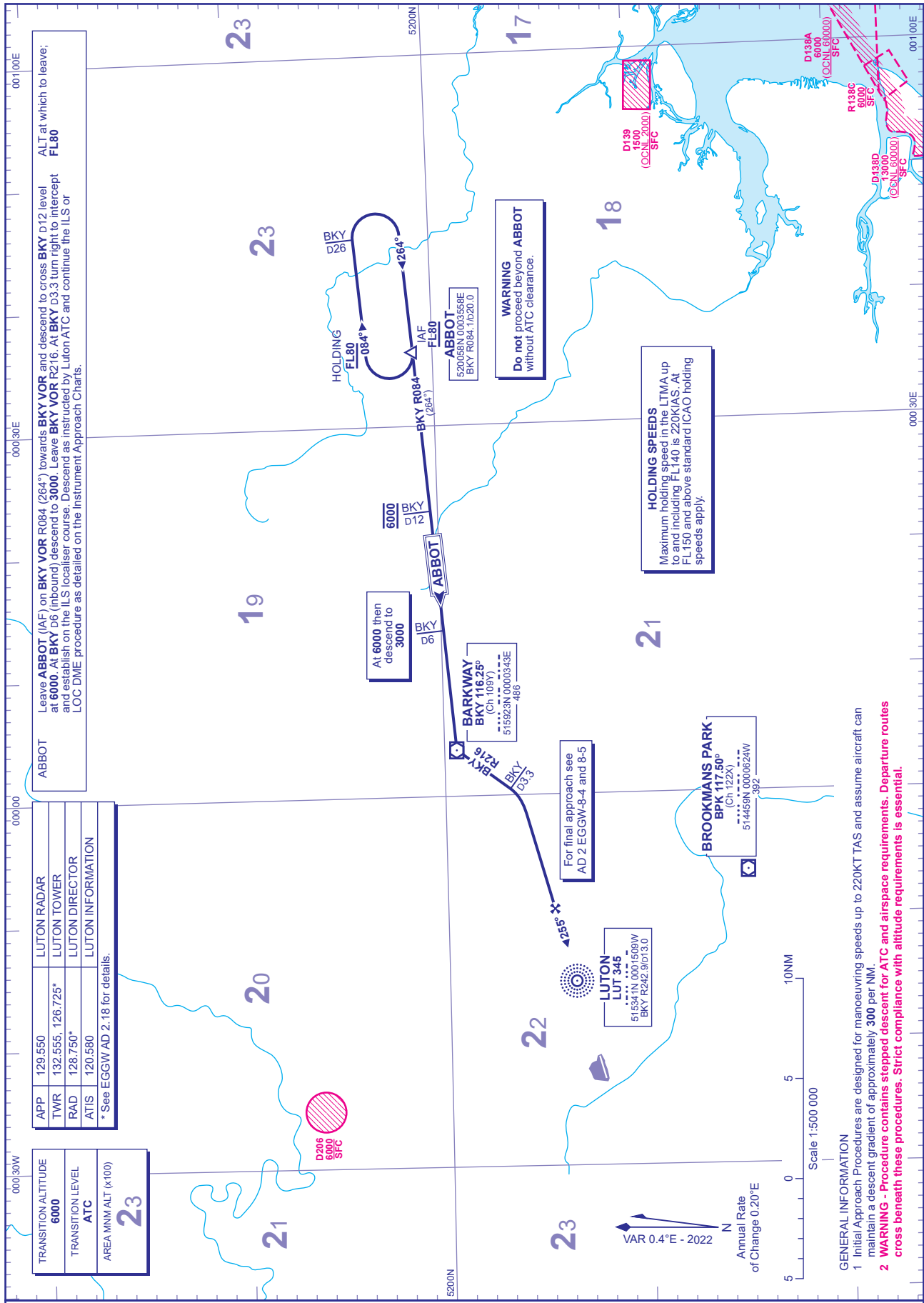


INITIAL APPROACH PROCEDURE ILS RWY 25 Without Radar Control

DISTANCES IN NAUTICAL MILES
BEARINGS, TRACKS AND RADIALS ARE MAGNETIC
ALTITUDES AND ELEVATIONS ARE IN FEET

LONDON LUTON via ABBOT



CHANGE (9/23): BKY VOR/DME RECALIBRATED. BPK DME AERIAL HEIGHT RADIALS.

GENERAL INFORMATION
1 Initial Approach Procedures are designed for manoeuvring speeds up to 220KT TAS and assume aircraft can maintain a descent gradient of approximately 300 per NIM.
2 **WARNING** - Procedure contains stepped descent for ATC and airspace requirements. Departure routes cross beneath these procedures. Strict compliance with altitude requirements is essential.