

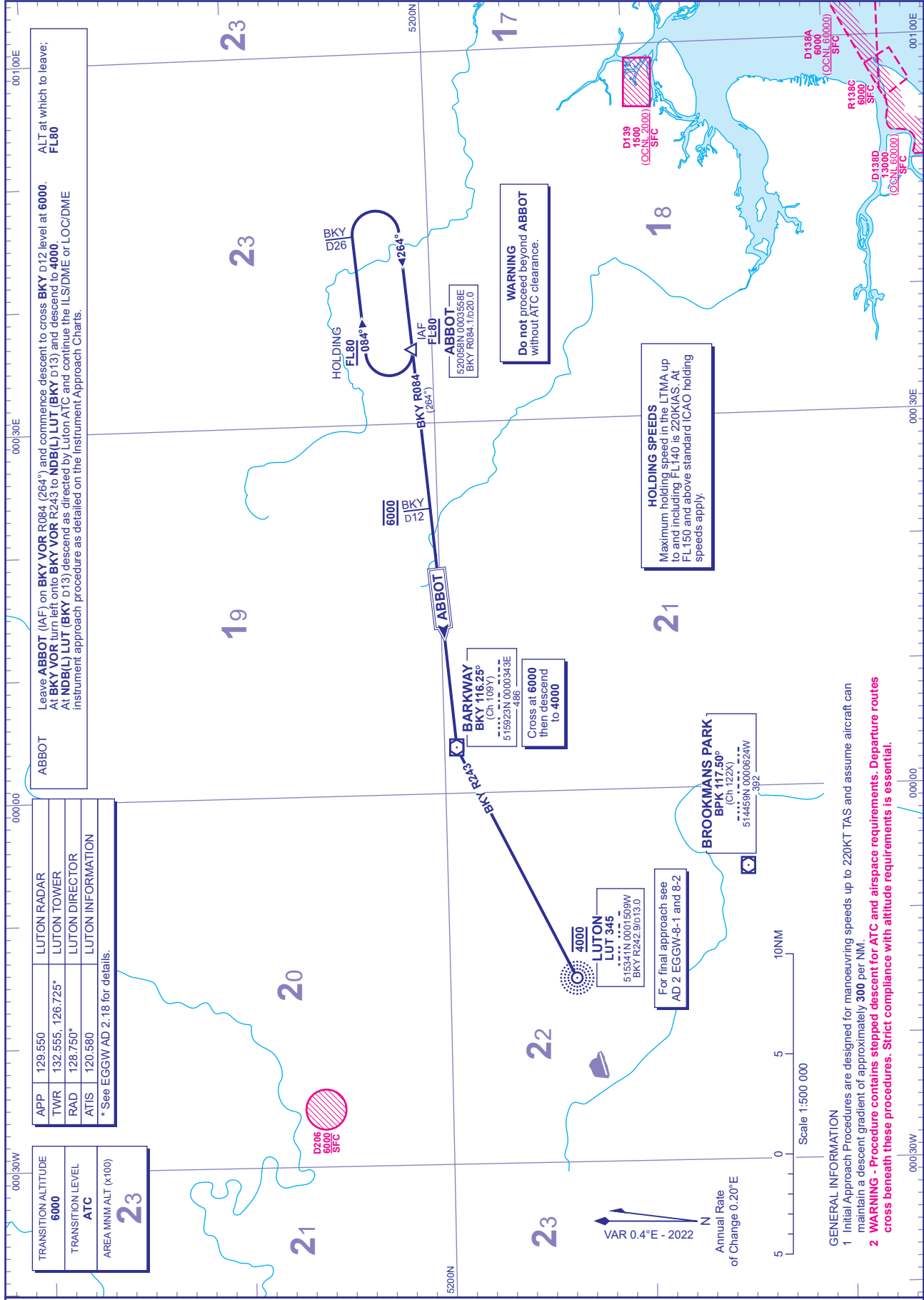
INITIAL APPROACH PROCEDURE

ILS RWY 07 Without Radar Control

DISTANCES IN NAUTICAL MILES
BEARINGS, TRACKS AND RADIALS ARE MAGNETIC
ALTITUDES AND ELEVATIONS ARE IN FEET

LONDON LUTON

via ABBOT



Leave **ABBOT** (IAF) on **BKY VOR R084 (264°)** and commence descent to cross **BKY D12** level at **6000**.
At **BKY VOR** turn left onto **BKY VOR R243** to **NDB(L) LUT (BKY D13)** and descend to **4000**.
At **NDB(L) LUT (BKY D13)** descend as directed by Luton ATC and continue the ILS/DME or LOC/DME instrument approach procedure as detailed on the Instrument Approach Charts.

APP	129.550	LUTON RADAR
TWR	132.555, 126.725*	LUTON TOWER
RAD	128.750*	LUTON DIRECTOR
ATIS	120.580	LUTON INFORMATION

* See EGGW AD 2.18 for details.

TRANSITION ALTITUDE	6000
TRANSITION LEVEL	ATC
AREA MIN ALT (x100)	23

ABBOT
520058N 00003558E
BKY R084.1/d20.0

BARKWAY
BKY 116.25°
(Ch 109Y)
515923N 00000343E
486

LUTON
LUT 345
515511N 0011509W
BKY R242.9/d13.0

BROOKMANS PARK
BPK 117.50°
(Ch 122X)
514459N 0000624W
392

HOLDING
FL80
084°
264°
4264°

ABBOT
FL80
IAF

LUTON
LUT 345
515511N 0011509W
BKY R242.9/d13.0

BROOKMANS PARK
BPK 117.50°
(Ch 122X)
514459N 0000624W
392

WARNING
Do not proceed beyond **ABBOT** without ATC clearance.

Cross at 6000
then descend
to **4000**

For final approach see
AD 2 EGGW-8-1 and 8-2

HOLDING SPEEDS
Maximum holding speed in the LTMA up to and including FL140 is 220KIAS. At FL150 and above standard ICAO holding speeds apply.

GENERAL INFORMATION

- Initial Approach Procedures are designed for manoeuvring speeds up to 220KT TAS and assume aircraft can maintain a descent gradient of approximately 300 per NM.
- WARNING - Procedure contains stepped descent for ATC and airspace requirements. Departure routes cross beneath these procedures. Strict compliance with altitude requirements is essential.**

CHANGE (9/23): BKY VOR/DME RECALIBRATED. BPK DME AERIAL HEIGHT RADIALS.

AERO INFO DATE 20 JUN 23

AD 2-EGGW-7-17