

STANDARD DEPARTURE CHART - INSTRUMENT (SID) - ICAO

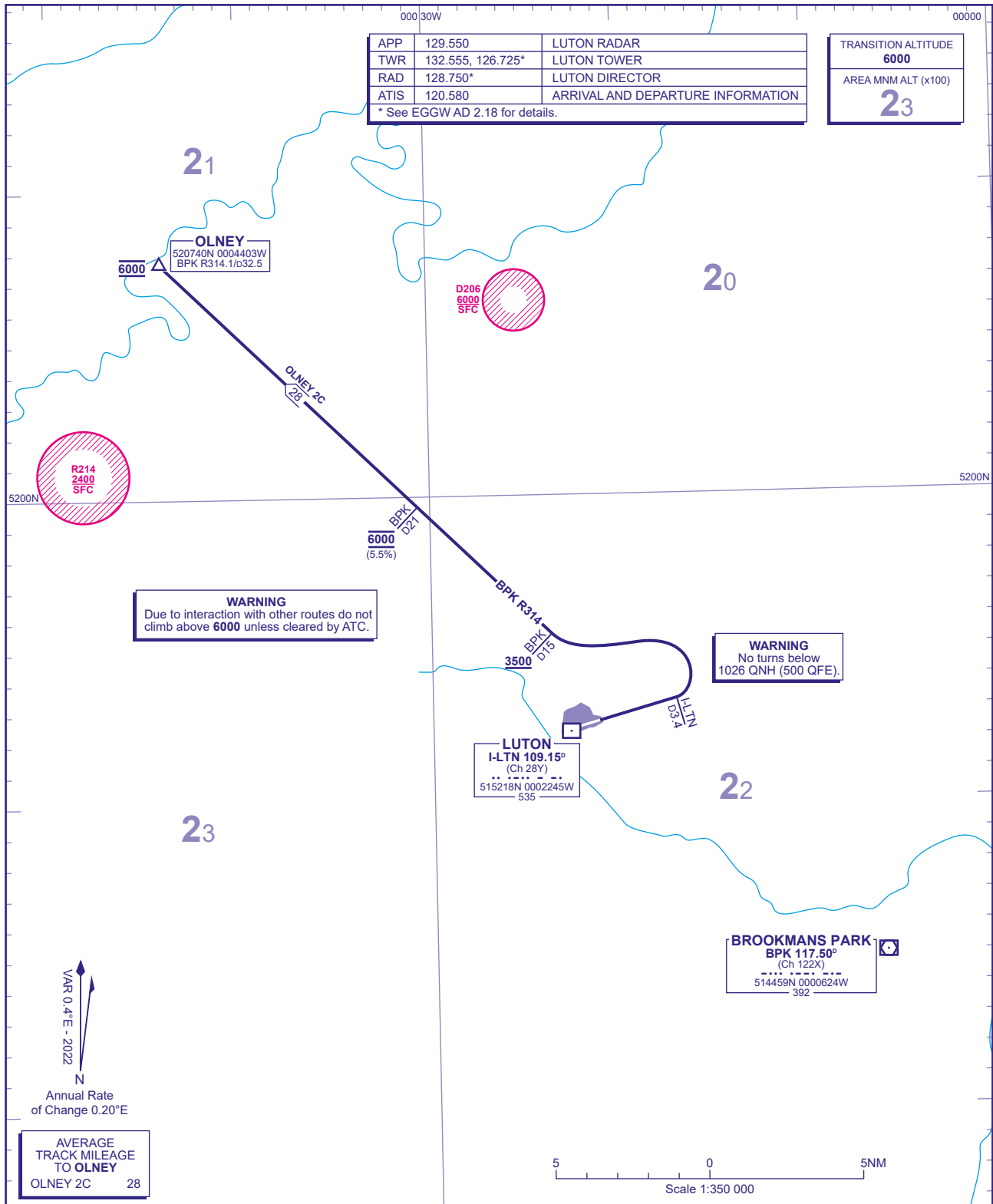
DISTANCES IN NAUTICAL MILES
BEARINGS, TRACKS AND RADIALS ARE MAGNETIC
ALTITUDES AND ELEVATIONS ARE IN FEET

LONDON LUTON
RWY 07
OLNEY 2C

APP	129.550	LUTON RADAR
TWR	132.555, 126.725*	LUTON TOWER
RAD	128.750*	LUTON DIRECTOR
ATIS	120.580	ARRIVAL AND DEPARTURE INFORMATION

* See EGGW AD 2.18 for details.

TRANSITION ALTITUDE	6000
AREA MNM ALT (x100)	23



WARNING
Due to interaction with other routes do not climb above 6000 unless cleared by ATC.

WARNING
No turns below 1026 QNH (500 QFE).

OLNEY 2C RWY 07 Climb straight ahead. At I-LTN D3.4 turn left to intercept BPK VOR R314 to OLNEY. Crossing BPK D15 at 3500 or above. T420, N57 Northbound.

GENERAL INFORMATION

- SIDs reflect Noise Preferential Routings. See EGGW AD 2.21 for Noise Abatement Procedures.
- Climb gradients in excess of 3-3% are necessary for Airspace and ATC purposes.
- Callsign for RTF frequency used **when instructed** after take-off: 'Luton Radar'.
- Report callsign, SID designator, current altitude and cleared altitude on first contact with 'Luton Radar'.
- Luton Radar also known as Essex Radar during 0001HRS and 0600HRS.
- En-route cruising level will be issued after take-off by 'London Control'. **Do not climb above SID levels until instructed by ATC.**
- Maximum 250KIAS below FL100 unless otherwise authorised.
- Expect first CPDLC Data Link Authority to be EGGT.

CHANGE (9/23): BPK VOR/DME RECALIBRATED. RADIALS. BPK VOR/DME ELEVATION REVISED.