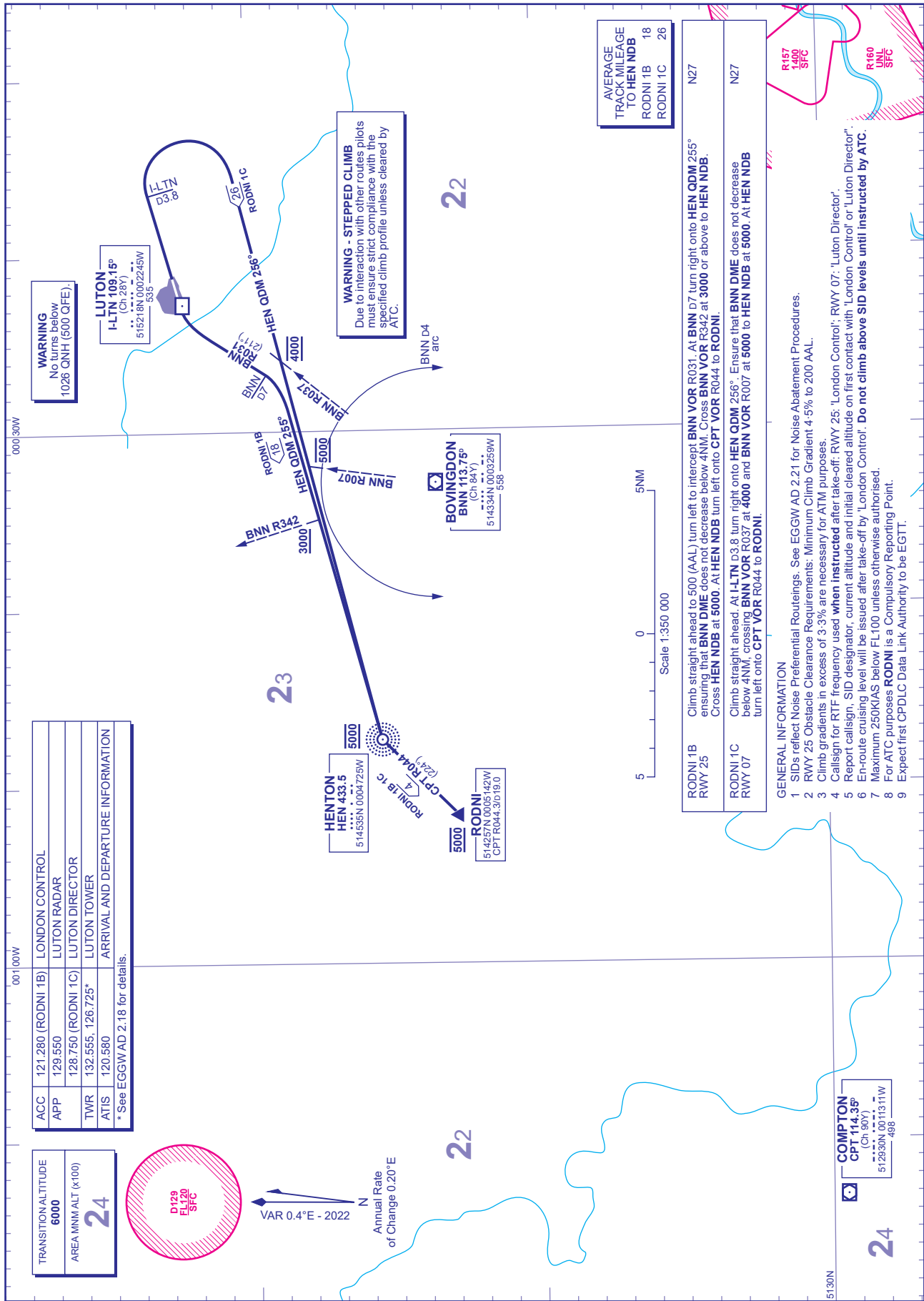


# STANDARD DEPARTURE CHART - INSTRUMENT (SID) - ICAO

DISTANCES IN NAUTICAL MILES  
BEARINGS, TRACKS AND RADIALS ARE MAGNETIC  
ALTITUDES AND ELEVATIONS ARE IN FEET

LONDON LUTON  
RWY 07 25  
RODNI 1B 1C



ACC	121.280 (RODNI 1B)	LONDON CONTROL
APP	129.550	LUTON RADAR
TWR	128.750 (RODNI 1C)	LUTON DIRECTOR
ATIS	132.555, 126.725*	LUTON TOWER
ARRIVAL AND DEPARTURE INFORMATION		
* See EGGW AD 2.18 for details.		

TRANSITION ALTITUDE	6000
AREA MIM ALT (x100)	24



VAR 0.4° E - 2022  
Annual Rate of Change 0.20° E

CHANGE (9/23): BNN VOR/DME ELEVATION REVISED. BNN, CPT VOR/DME RECALIBRATED. RADIALS.

**WARNING**  
No turns below  
1026 ONH (500 QFE).

LUTON 109.15°  
(Ch. 28Y)  
5152181N 01072248W  
535

**WARNING - STEPPED CLIMB**  
Due to interaction with other routes pilots must ensure they strictly comply with the specified climb profile unless cleared by ATC.

22

23

22

24

AVERAGE TRACK MILEAGE TO HEN NDB	
RODNI 1B	18
RODNI 1C	26

RODNI 1B RWY 25	N27
RODNI 1C RWY 07	N27

**GENERAL INFORMATION**

- 1 SIDs reflect Noise Preferential Routings. See EGGW AD 2.21 for Noise Abatement Procedures.
- 2 RWY 25 Obstacle Clearance Requirements: Minimum Climb Gradient 4-5% to 200 AAL.
- 3 Climb gradients in excess of 3:3% are necessary for ATM purposes.
- 4 Callsign for RTF frequency used **when instructed** after take-off: RWY 25: 'London Control'; RWY 07: 'Luton Director'.
- 5 Report callsign, SID designator, current altitude and initial cleared altitude on first contact with 'London Control' or 'Luton Director'.
- 6 En-route cruising level will be issued after take-off by 'London Control'. Do not climb above SID levels until instructed by ATC.
- 7 Maximum 250KIAS below FL100 unless otherwise authorised.
- 8 For ATC purposes **RODNI** is a Compulsory Reporting Point.
- 9 Expect first CPDLC Data Link Authority to be EGGT.

COMPTON  
CPT 114.35°  
(Ch. 90Y)  
512835N 001113.11W  
489

24