

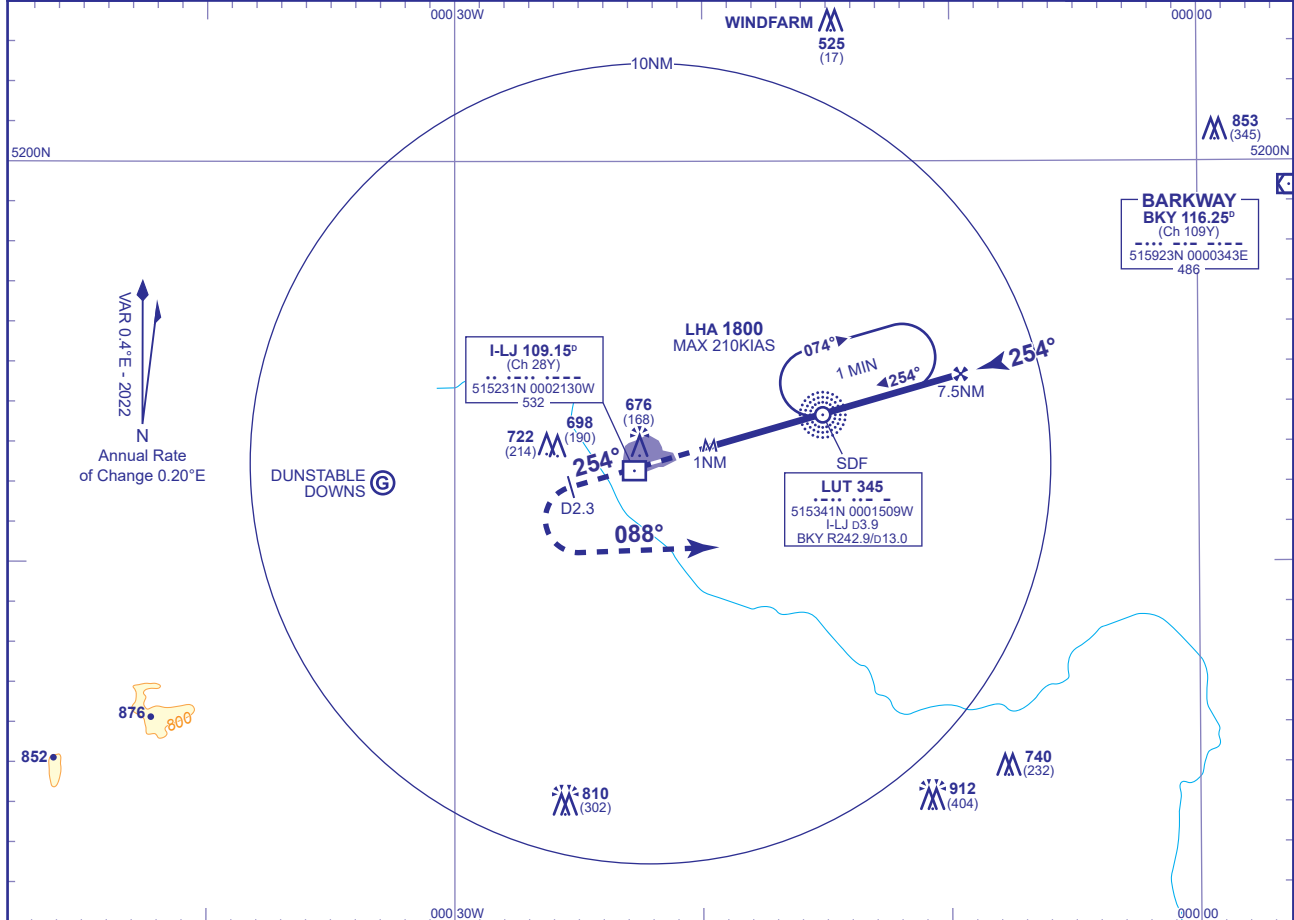
INSTRUMENT CHART - ICAO

LONDON LUTON
SRA RTR 2NM
RWY 25
 (ACFT CAT A,B,C,D)



APP	129.550	LUTON RADAR	AD ELEVATION	527
TWR	132.555, 126.725	LUTON TOWER	THR ELEVATION	508
	121.755	LUTON GROUND	OBSTACLE ELEVATION	912 AMSL (404) (ABOVE THR)
RAD	128.750	LUTON DIRECTOR		
ATIS	120.580	ARRIVAL INFORMATION	BEARINGS ARE MAGNETIC	

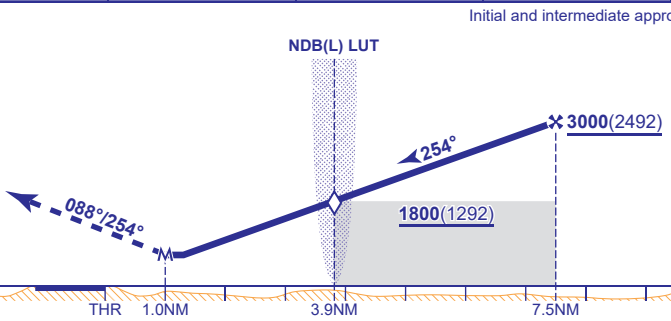
TRANSITION ALTITUDE
6000



RECOMMENDED PROFILE Gradient 5.35%, 325FT/NM

DME I-LJ	7.0	6.0	5.0	4.0	3.0	2.0
ALT(HGT)	2780(2272)	2460(1952)	2130(1622)	1810(1302)	1480(972)	1160(652)

MAPT 1NM after RTR
 Climb to **3000**. Straight ahead to I-LJ DME 2.3 outbound or **1500** whichever is the later, then turn left onto track **088°**, continuing climb to **3000** then continue as directed.
 RCF: Follow missed approach procedure to **3000** then return to **NDB(L) LUT** (I-LJ D3.9/ BKY R242.9/D13.0) to hold at **3000** or as directed.



Aircraft Category	Procedure	A	B	C	D	Rate of descent	G/S KT	160	140	120	100	80
		940(432)	940(432)	940(432)	940(432)		FT/MIN	870	760	650	540	430
VM(C)OCA (OCH AAL)	Total Area	1100(573)	1100(573)	1300(773)	1300(773)	RTR to MAPT	MIN:SEC	0:22	0:26	0:30	0:36	0:45

NOTE Aircraft unable to receive DME I-LJ, notify ATC.

CHANGE (9/23): BKY VOR/DME RECALIBRATED. RADIAL.