

INSTRUMENT APPROACH CHART - ICAO

LONDON LUTON
SRA RTR 2NM
RWY 07
 (ACFT CAT A,B,C,D)

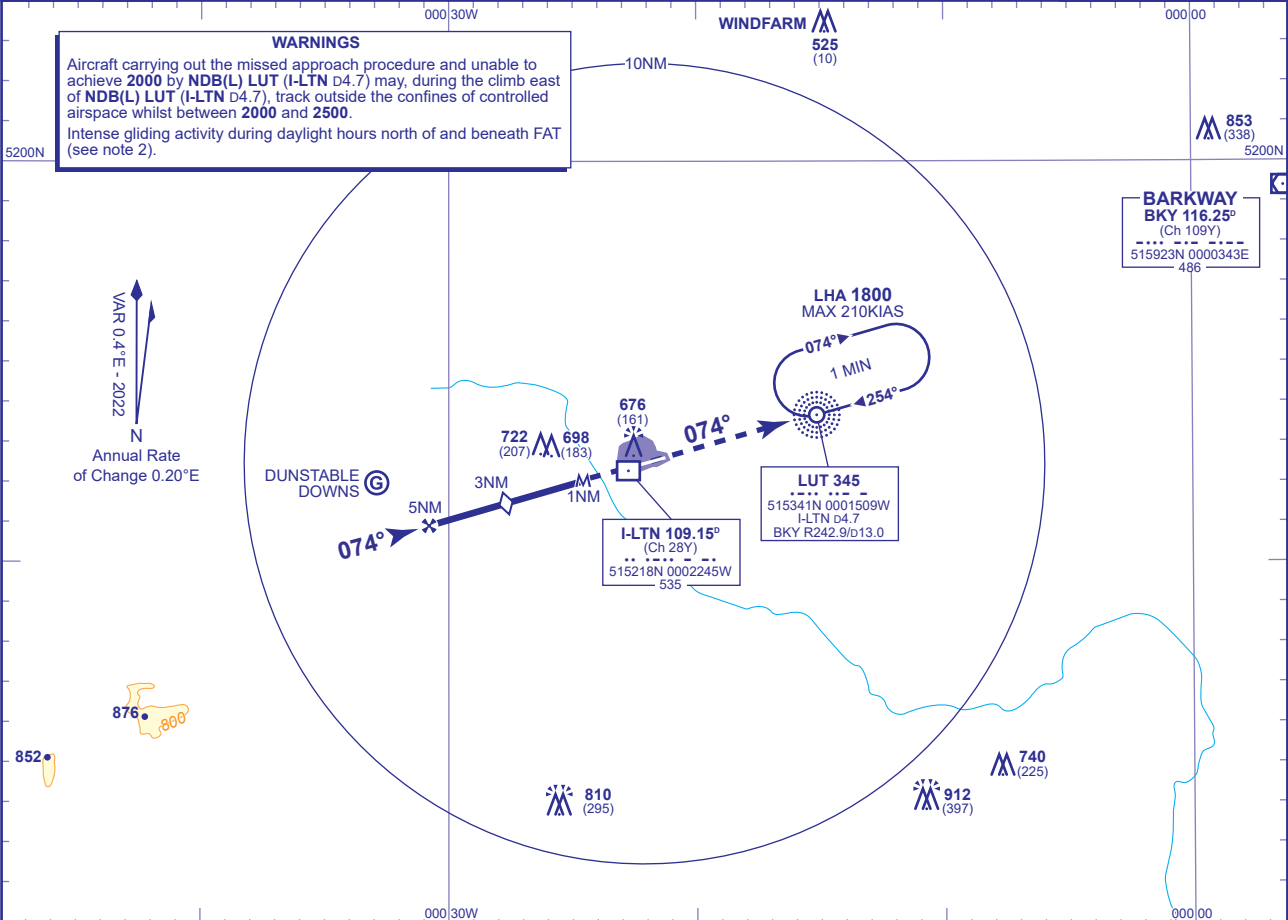


MSA 25NM NDB(L) LUT

APP	129.550	LUTON RADAR	AD ELEVATION	527
TWR	132.555, 126.725	LUTON TOWER	THR ELEVATION	515
	121.755	LUTON GROUND	OBSTACLE ELEVATION	912 AMSL (397) (ABOVE THR)
RAD	128.750	LUTON DIRECTOR		
ATIS	120.580	ARRIVAL INFORMATION	BEARINGS ARE MAGNETIC	

TRANSITION ALTITUDE
6000

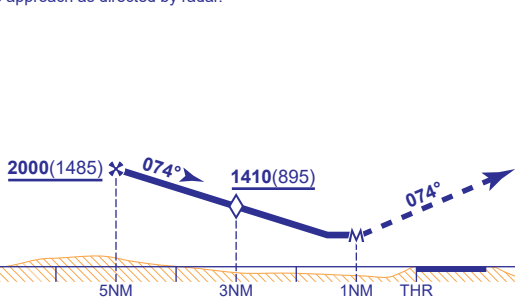
WARNINGS
 Aircraft carrying out the missed approach procedure and unable to achieve **2000** by **NDB(L) LUT (I-LTN D4.7)** may, during the climb east of **NDB(L) LUT (I-LTN D4.7)**, track outside the confines of controlled airspace whilst between **2000** and **2500**.
 Intense gliding activity during daylight hours north of and beneath **FAT** (see note 2).



RADAR ADVISORY HEIGHTS Gradient 4.9%, 297FT/NM

NM	5.0	4.0	3.0 (SDF)	2.0
ALT(HGT)	2000(1485)	1700(1185)	1410(895)	1110(595)

Initial and intermediate approach as directed by radar.



NDB(L) LUT

MAPT 1NM after RTR
 Climb straight ahead to **NDB(L) LUT (I-LTN D4.7)** to hold at **3000**, or as directed. Aircraft which achieve **2000** by **NDB(L) LUT (I-LTN D4.7)** continue climb in the hold. Aircraft unable to achieve **2000** by **NDB(L) LUT (I-LTN D4.7)** inform ATC and continue climb on **NDB(L) LUT QDR 074°** to **2000** then turn right to **NDB(L) LUT (I-LTN D4.7/BKY R242.9/D13.0)** to hold at **3000** or as directed.

Aircraft Category	A	B	C	D	Rate of descent	G/S KT	160	140	120	100	80	
OCA (OCH)	Procedure	990(475)	990(475)	990(475)		990(475)	FT/MIN	790	690	590	500	400
VM(C)OCA (OCH AAL)	Total Area	1100(573)	1100(573)	1300(773)	1300(773)	RTR to MAPT	MIN:SEC	0:23	0:26	0:30	0:36	0:45

NOTE 1 Aircraft will normally be required to hold not lower than **3000**.
2 Gliding takes place in ceded airspace north of and beneath LOC. Pilots are warned not to descend below the GP/recommended descent profile. Page EGGW AD 2.22 Paragraph 6 refers.

CHANGE (9/23): BKY VOR/DME RECALIBRATED. RADIAL.