

RN/R1 (DME/DME or GNSS) STANDARD ARRIVAL CHART - INSTRUMENT (STAR) - ICAO

DISTANCES IN NAUTICAL MILES
TRACKS ARE MAGNETIC
ALTITUDES AND ELEVATIONS ARE IN FEET

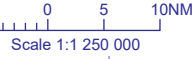
LONDON LUTON
TELTU 1N

TRANSITION ALTITUDE	6000
TRANSITION LEVEL	ATC
AREA MNM ALT (x100)	24

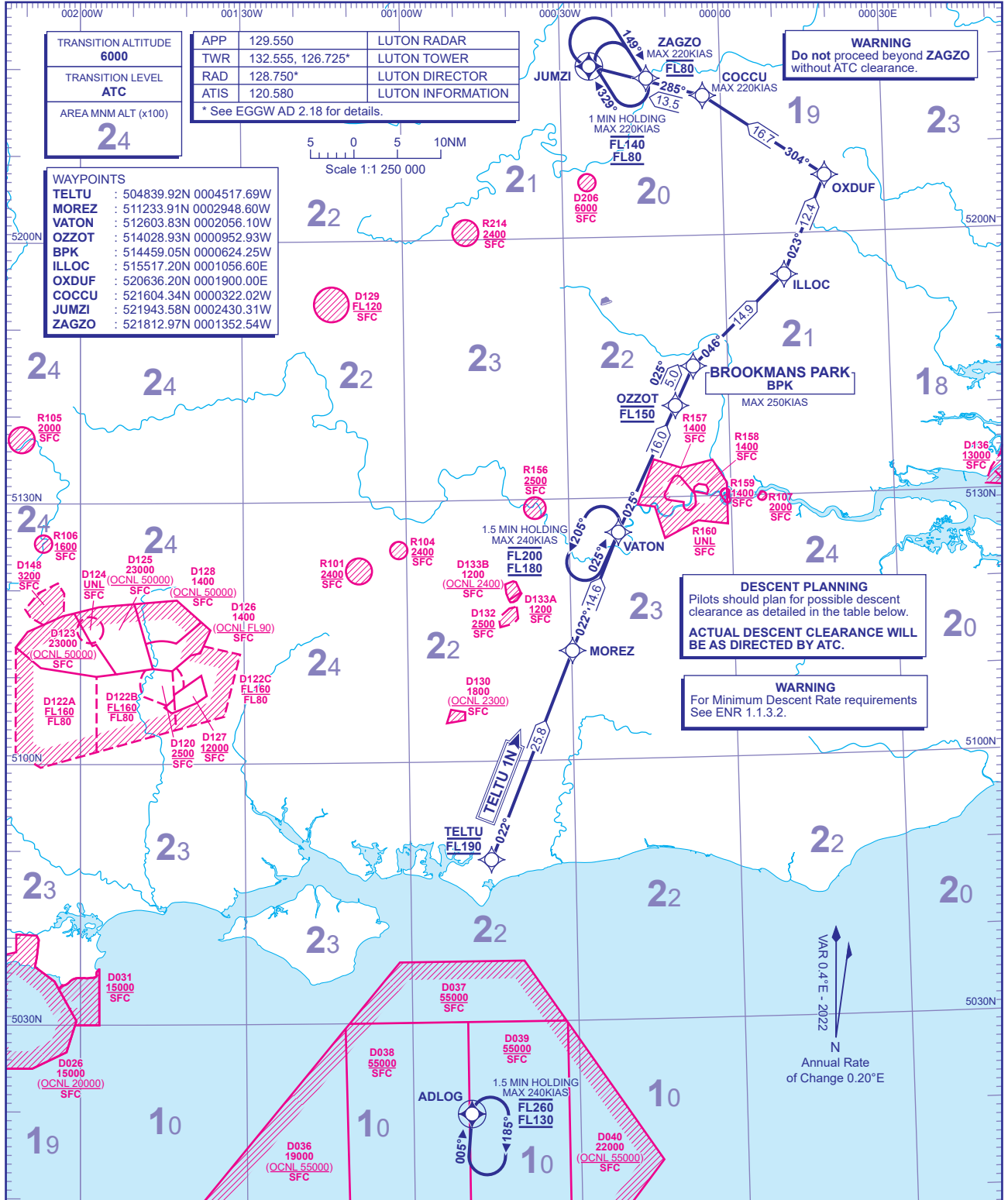
APP	129.550	LUTON RADAR
TWR	132.555, 126.725*	LUTON TOWER
RAD	128.750*	LUTON DIRECTOR
ATIS	120.580	LUTON INFORMATION

* See EGGW AD 2.18 for details.

WAYPOINTS	
TELTU	: 504839.92N 0004517.69W
MOREZ	: 511233.91N 0002948.60W
VATON	: 512603.83N 0002056.10W
OZZOT	: 514028.93N 0000952.93W
BPK	: 514459.05N 0000624.25W
ILLOC	: 515517.20N 0001056.60E
OXDUF	: 520636.20N 0001900.00E
COCCU	: 521604.34N 0000322.02W
JUMZI	: 521943.58N 0002430.31W
ZAGZO	: 521812.97N 0001352.54W



WARNING
Do not proceed beyond ZAGZO without ATC clearance.



DESCENT PLANNING
Pilots should plan for possible descent clearance as detailed in the table below.
ACTUAL DESCENT CLEARANCE WILL BE AS DIRECTED BY ATC.

WARNING
For Minimum Descent Rate requirements See ENR 1.1.3.2.



ROUTE DESIGNATOR	VIA	ROUTE	LEVELS
TELTU 1N	(U)M185, N17, L982, (U)N6	TELTU - MOREZ - VATON - OZZOT - BPK - ILLOC - OXDUF - COCCU - JUMZI, then turn right to intercept course 149° to ZAGZO.	TELTU FL190 OZZOT FL150 ZAGZO FL80

- GENERAL INFORMATION**
- Standard Routes may be varied at the discretion of ATC.
 - Adhere to maximum speed limits where specified by waypoint constraints.
 - Maximum 250KIAS below FL100 unless authorised by ATC.
 - Aircraft may be instructed "Direct to" (waypoint) following radar vectoring.
 - En-route holding may be required at **ADLOG** or **VATON** as directed by ATC.

CHANGE (6/23): D148 KEEVIL ADDED.