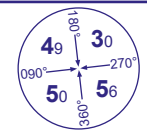


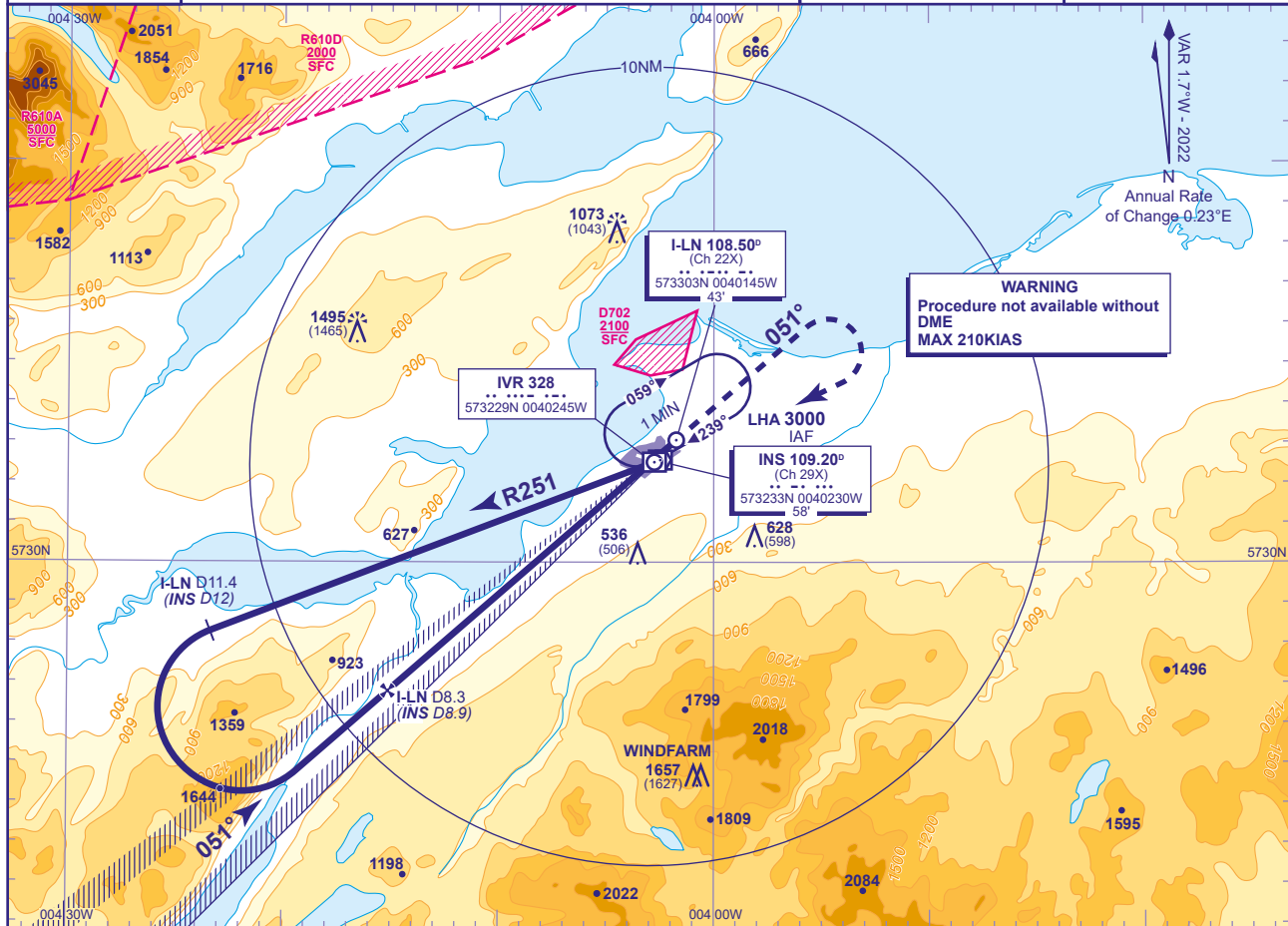
INVERNESS APPROACH CHART - ICAO

INVERNESS ILS/DME/VOR RWY 05 (ACFT CAT C)



APP	122.605	INVERNESS APPROACH	AD ELEVATION	31
TWR	118.405, 122.605	INVERNESS TOWER	THR ELEVATION	30
RAD	122.605	INVERNESS RADAR	OBSTACLE ELEVATION	1495 AMSL (1465) (ABOVE THR)
ATIS	109.200	INVERNESS INFORMATION	BEARINGS ARE MAGNETIC	

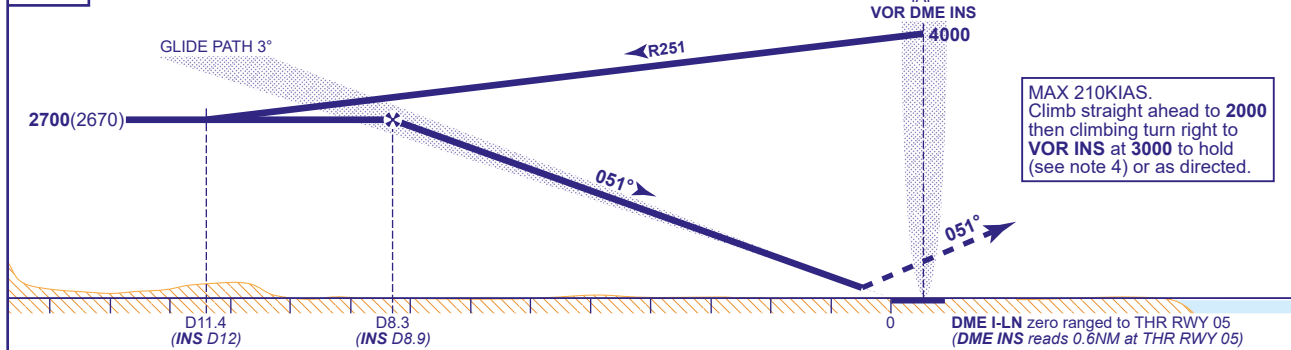
TRANSITION ALTITUDE
3000



RECOMMENDED PROFILE GLIDE PATH 3°, 320FT/NM

DME I-LN	7	6	5	4	3	2	1
ALT(HGT)	2320(2290)	2000(1970)	1680(1650)	1360(1330)	1040(1010)	720(690)	400(370)

RDH 50 Arrival not below MSA. (See note 3).



MAX 210KIAS.
Climb straight ahead to **2000**
then climb turn right to
VOR INS at **3000** to hold
(see note 4) or as directed.

Aircraft Category		C	Rate of descent	G/S KT	160	140	120	100	80
OCA (OCH)	CAT I	209(179)							
VM(C)OCA (OCH AAL)	Total Area	1400(1369)	FT/MIN	850	750	640	530	430	
	North of RWY 05/23	1100(1069)							

NOTE 1 NDB(L) IVR may be used if INS VOR is not available.
2 Lowest altitude to commence procedure from hold is **3000**.
3 Subject to ATC approval, aircraft inbound to VOR/DME INS may descend to **3500** after passing INS DME 10 inbound.
4 Pilots should take account of the climb performance of their aircraft to arrange their flight to reach INS VOR at **3000**.
5 Direct arrivals see chart AD 2-EGPE-8-8.

CHANGE (5/23): INS VOR RECALIBRATION.