

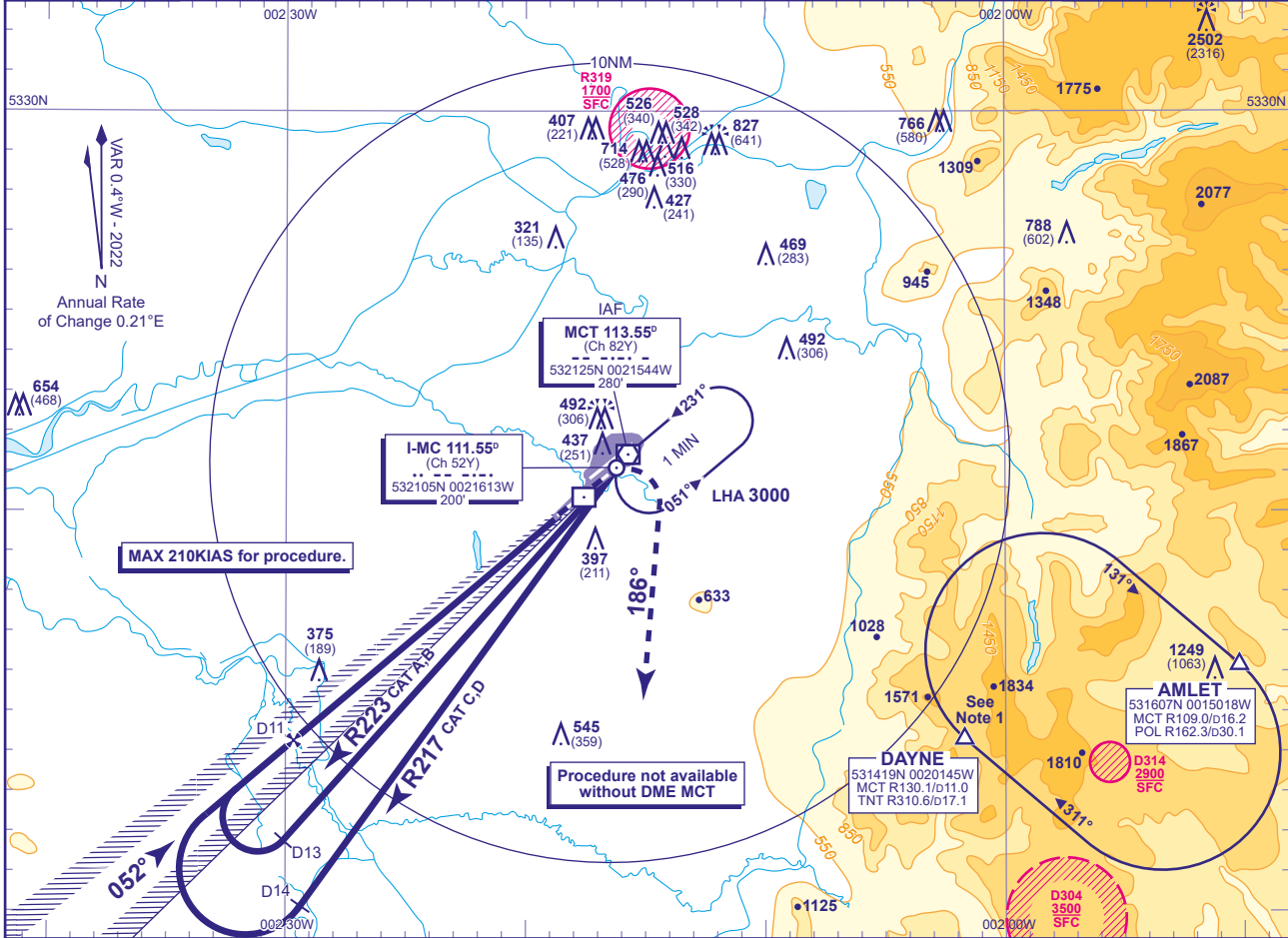
INSTRUMENT APPROACH CHART - ICAO

**MANCHESTER
ILS/DME (MCT)
RWY 05R**
(ACFT CAT A,B,C,D)



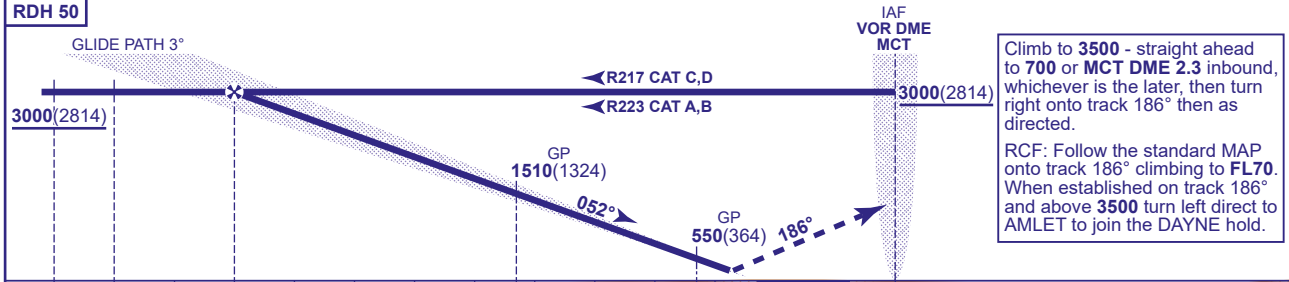
APP	118.580, 135.005	MANCHESTER RADAR	AD ELEVATION	257
	121.355	MANCHESTER DIRECTOR	THR ELEVATION	186
TWR	118.630, 119.405	MANCHESTER TOWER	OBSTACLE ELEVATION	2502 AMSL (2316) (ABOVE THR)
	121.855, 121.705	MANCHESTER GROUND		
ARRIVAL ATIS	128.180	MANCHESTER INFORMATION	BEARINGS ARE MAGNETIC	

TRANSITION ALTITUDE
5000



RECOMMENDED PROFILE GLIDEPATH 3°, 320FT/NM

DME MCT	10	9	8	7	6	5	4	3
ALT(HGT)	2680(2494)	2360(2174)	2050(1864)	1730(1544)	1410(1224)	1090(904)	780(594)	460(274)



IAF VOR DME MCT reads 2.3NM at THR RWY 05R

Aircraft Category		A	B	C	D	Rate of descent	G/S KT FT/MIN	160	140	120	100	80
OCA (OCH)	CAT I	328(142)	338(152)	350(164)	364(178)					850	750	640
VM(C)OCA (OCH AAL)	Total Area	790(533)	820(563)	1110(853)	1110(853)							

NOTE 1 DAYNE HOLD:- Limiting outbound distance MCT DME 16/TNT DME 14. Minimum holding level is FL70.
2 Procedure restricted to maximum 210KIAS.