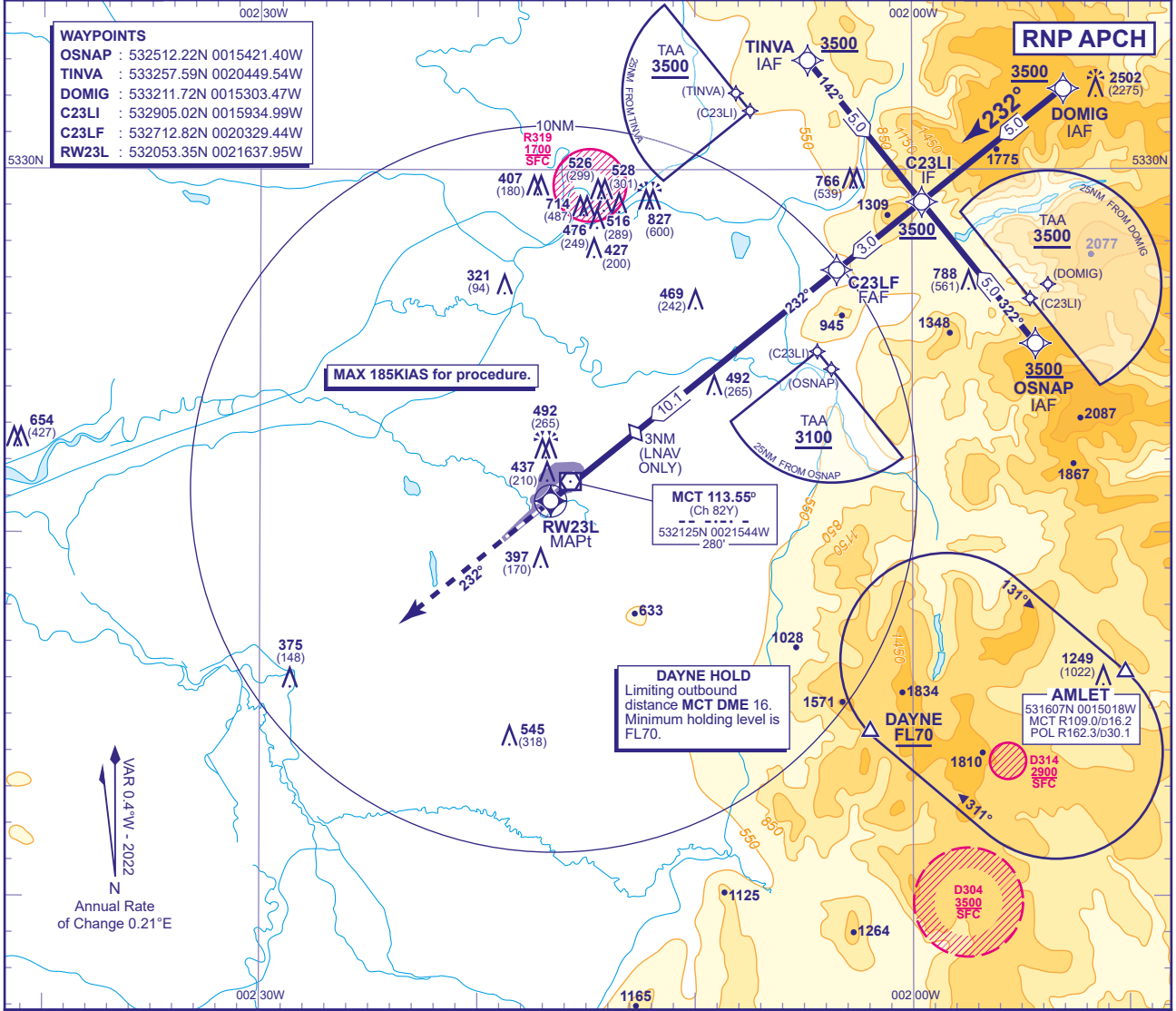


APP	118.580, 135.005	MANCHESTER RADAR	AD ELEVATION	257
	121.355	MANCHESTER DIRECTOR	THR ELEVATION	227
TWR	118.630, 119.405	MANCHESTER TOWER	OBSTACLE ELEVATION	2502 AMSL (2275) (ABOVE THR)
	121.855, 121.705	MANCHESTER GROUND		
ARRIVAL ATIS	128.180	MANCHESTER INFORMATION	BEARINGS ARE MAGNETIC	

MIN TEMP	-15°C
TRANSITION ALTITUDE	5000

WAYPOINTS

OSNAP : 532512.22N 0015421.40W
 TINVA : 533257.59N 0020449.54W
 DOMIG : 533211.72N 0015303.47W
 C23LI : 532905.02N 0015934.99W
 C23LF : 532712.82N 0020329.44W
 RW23L : 532053.35N 0021637.95W



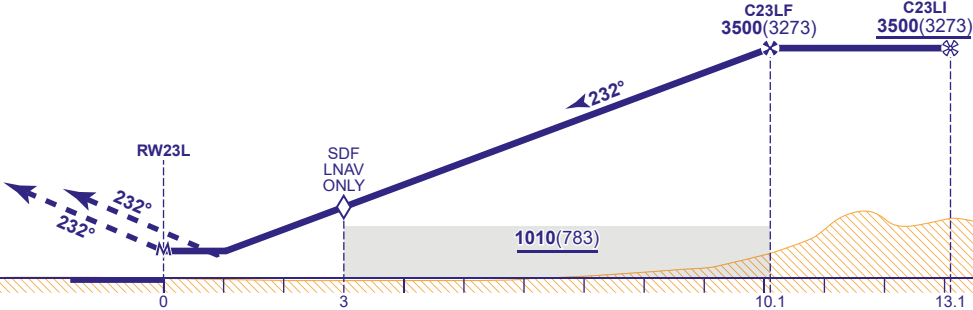
RECOMMENDED PROFILE VNAV VERTICAL PATH ANGLE 3.0°, 318FT/NM. LNAV Gradient 5.2%, 320FT/NM

NM to RW23L	10	9	8	7	6	5	4	3(LNAV SDF)	2
ALT(HGT)	3460(3233)	3140(2913)	2820(2593)	2510(2283)	2190(1963)	1870(1643)	1550(1323)	1230(1003)	910(683)

MAPt (LNAV):RW23L

Climb straight ahead to 3500 continue as directed.

RCF: From VOR MCT DME 10 at 3500, (if below 3500 continue climb in left turn to 3500) turn left onto track 068° continuing climb to FL70 to join the DAYNE hold.



Aircraft Category		A	B	C	D	Rate of descent	G/S KT	160	140	120	100	80
		FT/MIN	850	740	640		530	420				
OCA (OCH)	LNAV/VNAV	680(453)	680(453)	680(453)	680(453)							
	LNAV	680(453)	680(453)	680(453)	680(453)							
VM(C)OCA (OCH AAL)	Total Area	790(533)	820(563)	1110(853)	1110(853)							

NOTE 1 Pilots should 'Request RNP Approach' on first contact with Manchester Radar.

CHANGE (5/23): MAG VAR. ANNUAL RATE OF CHANGE. MCT VOR RECALIBRATED. DAYNE HOLD. RADIALS.