

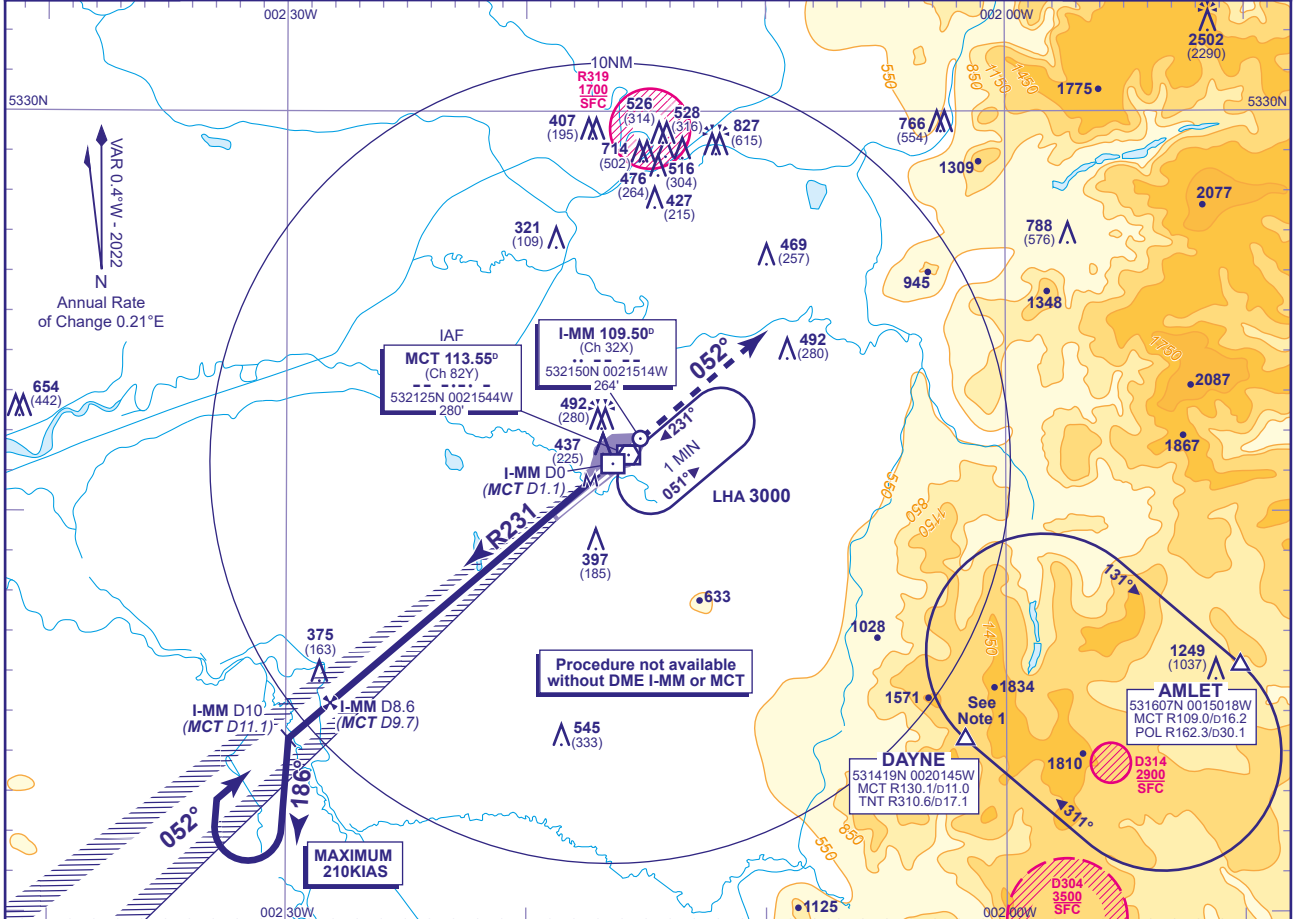
INSTRUMENT DEPARTURE CHART - ICAO

MANCHESTER
LOC/DME
RWY 05L
 (ACFT CAT A,B,C,D)



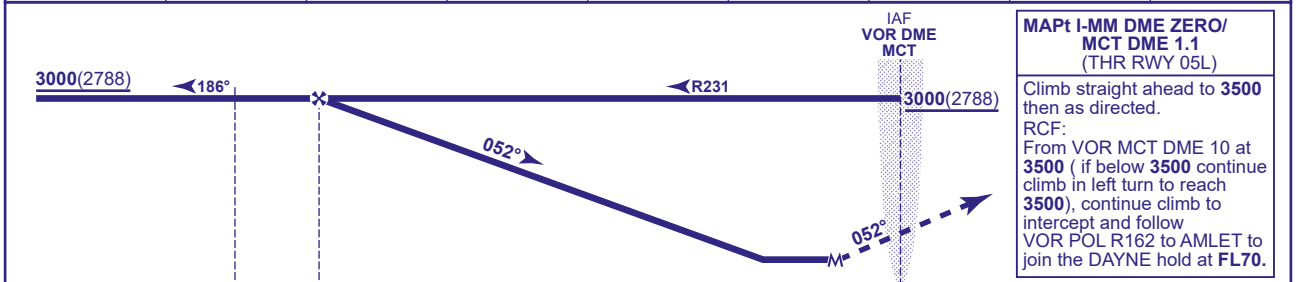
APP	118.580, 135.005	MANCHESTER RADAR	AD ELEVATION	257
		MANCHESTER DIRECTOR	THR ELEVATION	212
TWR	118.630, 119.405	MANCHESTER TOWER	OBSTACLE ELEVATION	2502 AMSL (2290) (ABOVE THR)
		MANCHESTER GROUND		
ARRIVAL ATIS	128.180	MANCHESTER INFORMATION	BEARINGS ARE MAGNETIC	

TRANSITION ALTITUDE
5000



RECOMMENDED PROFILE Gradient 5.2%, 318FT/NM

DME I-MM(MCT)	8(9.1)	7(8.1)	6(7.1)	5(6.1)	4(5.1)	3(4.1)	2(3.1)	1(2.1)
ALT(HGT)	2810(2598)	2490(2278)	2170(1958)	1860(1648)	1540(1328)	1220(1008)	900(688)	590(378)



DME I-MM zero ranged to THR RWY 05L (DME MCT reads 1.1NM at THR RWY 05L)

Aircraft Category		A	B	C	D	Rate of descent	G/S KT				
OCA (OCH)	Procedure	670(458)	670(458)	670(458)	670(458)		FT/MIN	160	140	120	100
VM(C)OCA (OCH AAL)	Total Area	790(533)	820(563)	1110(853)	1110(853)		850	740	640	530	420

NOTE 1 DAYNE HOLD:- Limiting outbound distance MCT DME 16/TNT DME 14. Minimum holding level is FL70.
2 DME MCT may be used if DME I-MM is not available.
3 Procedure turns restricted to maximum 210KIAS.