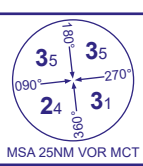
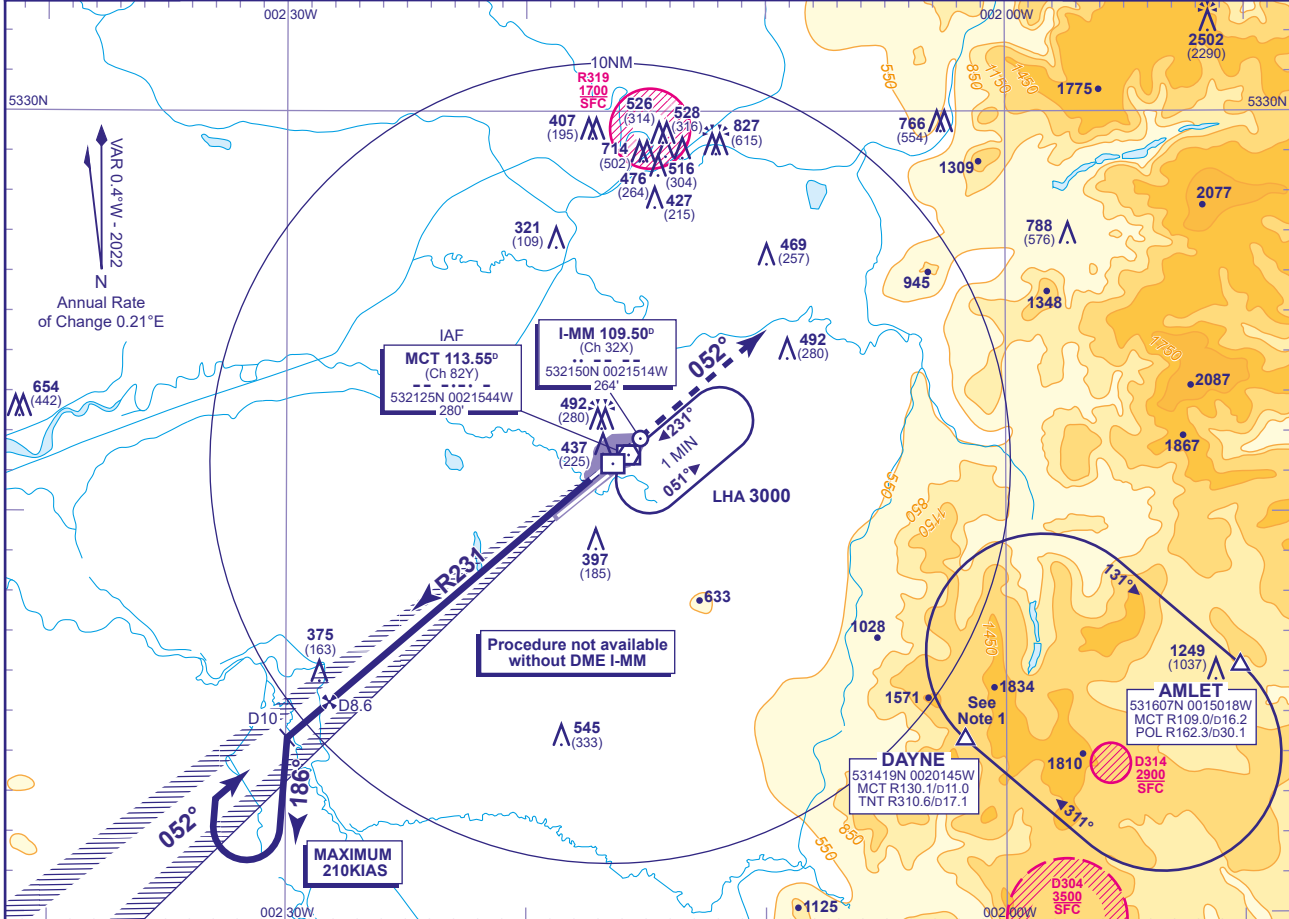


MANCHESTER ILS/DME (I-MM) RWY 05L (ACFT CAT A,B,C,D)



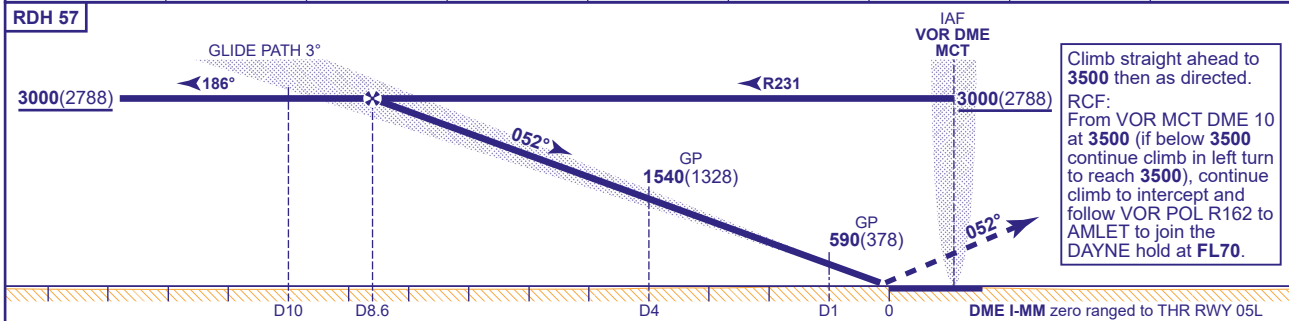
APP	118.580, 135.005	MANCHESTER RADAR	AD ELEVATION	257
	121.355	MANCHESTER DIRECTOR	THR ELEVATION	212
TWR	118.630, 119.405	MANCHESTER TOWER	OBSTACLE ELEVATION	2502 AMSL (2290) (ABOVE THR)
	121.855, 121.705	MANCHESTER GROUND		
ARRIVAL ATIS	128.180	MANCHESTER INFORMATION	BEARINGS ARE MAGNETIC	

TRANSITION ALTITUDE
5000



RECOMMENDED PROFILE GLIDE PATH 3°, 318FT/NM

DME I-MM	8	7	6	5	4	3	2	1
ALT(HGT)	2810(2598)	2490(2278)	2170(1958)	1860(1648)	1540(1328)	1220(1008)	900(688)	590(378)



Climb straight ahead to **3500** then as directed.
RCF:
From VOR MCT DME 10 at **3500** (if below **3500** continue climb, left turn to reach **3500**, continue climb to intercept and follow VOR POL R162 to AMLET to join the DAYNE hold at **FL70**.)

Aircraft Category					Rate of descent						
	A	B	C	D		G/S KT	160	140	120	100	80
OCA (OCH)	CAT I	369(157)	380(168)	392(180)	405(193)	FT/MIN	850	740	640	530	420
	CAT II	277(65)	289(77)								
VM(C)OCA (OCH AAL)	Total Area	790(533)	820(563)	1110(853)	1110(853)						

NOTE 1 DAYNE HOLD:- Limiting outbound distance MCT DME 16/TNT DME 14. Minimum holding level is FL70.
2 Procedure turns restricted to maximum 210KIAS.