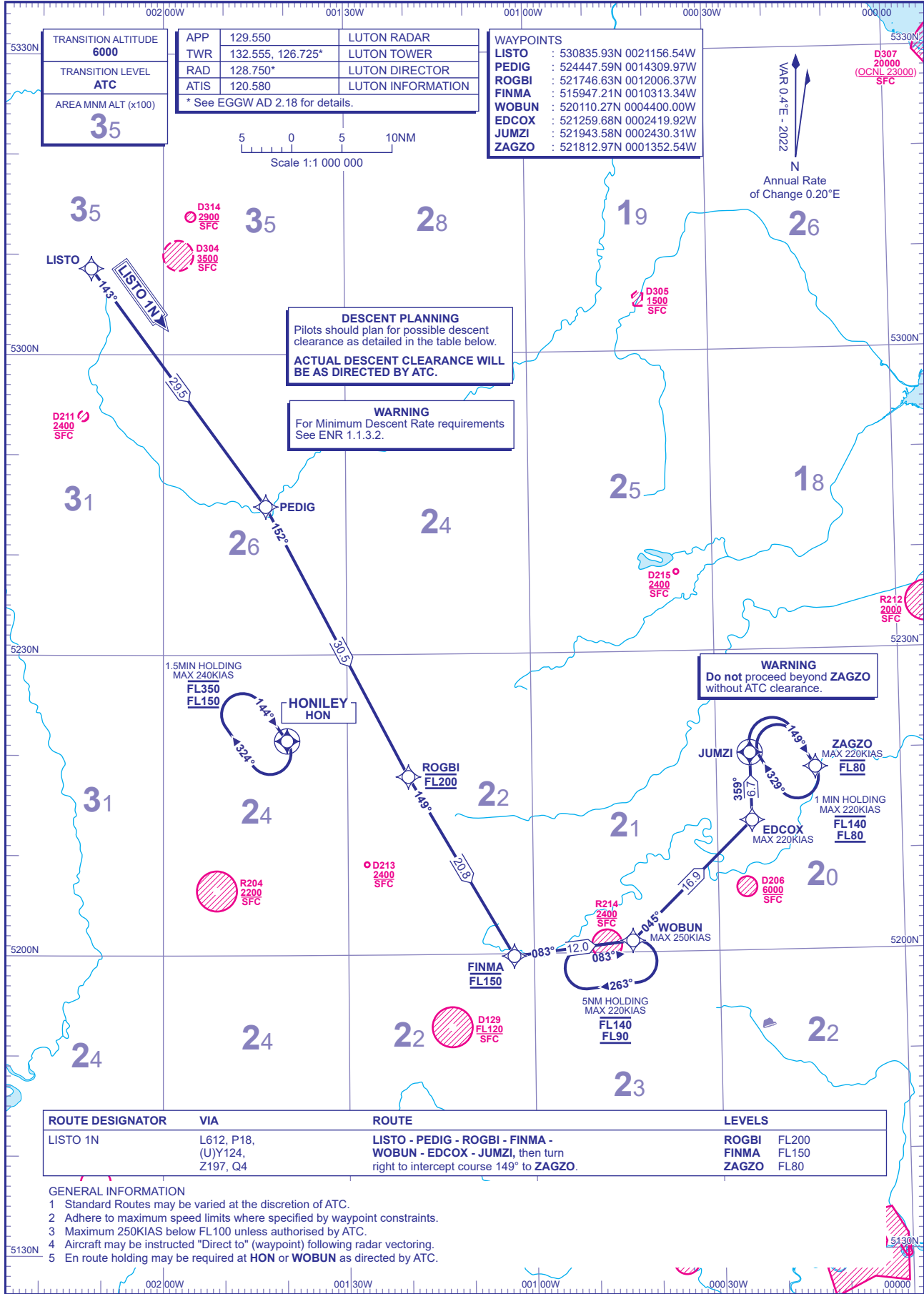


RNAV1 (DME/DME or GNSS)  
STANDARD ARRIVAL CHART -  
INSTRUMENT (STAR) - ICAO

DISTANCES IN NAUTICAL MILES  
TRACKS ARE MAGNETIC  
ALTITUDES AND ELEVATIONS ARE IN FEET

LONDON LUTON  
LISTO 1N



TRANSITION ALTITUDE	6000
TRANSITION LEVEL	ATC
AREA MNM ALT (x100)	35

APP	129.550	LUTON RADAR
TWR	132.555, 126.725*	LUTON TOWER
RAD	128.750*	LUTON DIRECTOR
ATIS	120.580	LUTON INFORMATION
* See EGGW AD 2.18 for details.		

WAYPOINTS	
LISTO	: 530835.93N 0021156.54W
PEDIG	: 524447.59N 0014309.97W
ROGBI	: 521746.63N 0012006.37W
FINMA	: 515947.21N 0010313.34W
WOBUN	: 520110.27N 0004400.00W
EDCOX	: 521259.68N 0002419.92W
JUMZI	: 521943.58N 0002430.31W
ZAGZO	: 521812.97N 0001352.54W

**DESCENT PLANNING**  
Pilots should plan for possible descent clearance as detailed in the table below.  
**ACTUAL DESCENT CLEARANCE WILL BE AS DIRECTED BY ATC.**

**WARNING**  
For Minimum Descent Rate requirements See ENR 1.1.3.2.

**WARNING**  
Do not proceed beyond ZAGZO without ATC clearance.

ROUTE DESIGNATOR	VIA	ROUTE	LEVELS
LISTO 1N	L612, P18, (U)Y124, Z197, Q4	LISTO - PEDIG - ROGBI - FINMA - WOBUN - EDCOX - JUMZI, then turn right to intercept course 149° to ZAGZO.	ROGBI FL200 FINMA FL150 ZAGZO FL80

- GENERAL INFORMATION**
- Standard Routes may be varied at the discretion of ATC.
  - Adhere to maximum speed limits where specified by waypoint constraints.
  - Maximum 250KIAS below FL100 unless authorised by ATC.
  - Aircraft may be instructed "Direct to" (waypoint) following radar vectoring.
  - En route holding may be required at HON or WOBUN as directed by ATC.

CHANGE (4/23): AREA MNM ALT FIGURE REVISED.

AERO INFO DATE 24 JAN 23

AD 2-EGGW-7-5