

**RNAV1 (DME/DME or GNSS)  
STANDARD ARRIVAL CHART -  
INSTRUMENT (STAR) - ICAO**

DISTANCES IN NAUTICAL MILES  
TRACKS ARE MAGNETIC  
ALTITUDES AND ELEVATIONS ARE IN FEET

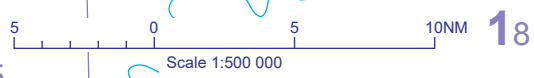
**LONDON LUTON  
FINMA 1N SILVA 1N**

TRANSITION ALTITUDE	<b>6000</b>
TRANSITION LEVEL	<b>ATC</b>
AREA MNM ALT (x100)	<b>25</b>

APP	129.550	LUTON RADAR
TWR	132.555, 126.725*	LUTON TOWER
RAD	128.750*	LUTON DIRECTOR
ATIS	120.580	LUTON INFORMATION
* See EGGW AD 2.18 for details.		

**WAYPOINTS**

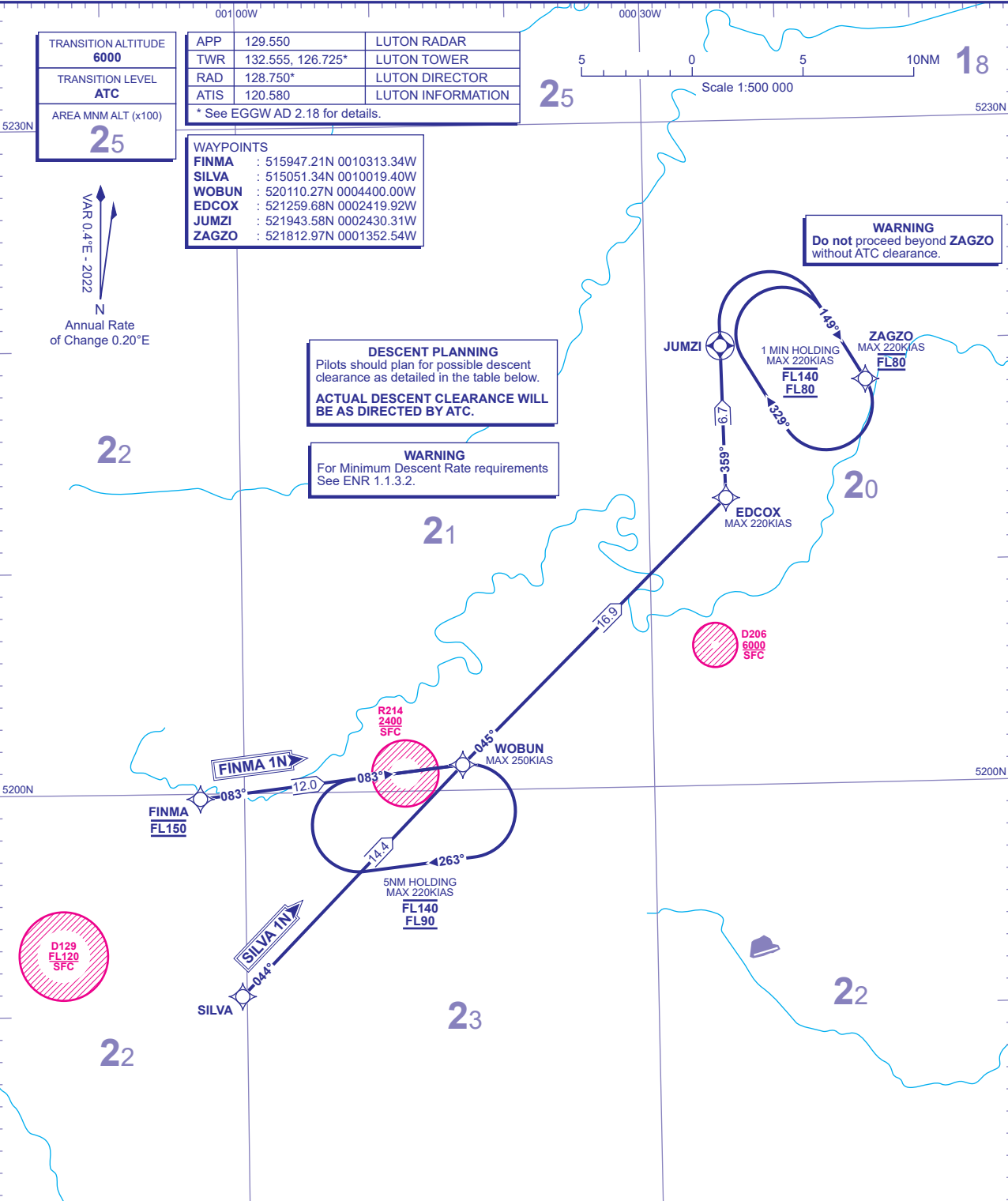
FINMA	: 515947.21N 0010313.34W
SILVA	: 515051.34N 0010019.40W
WOBUN	: 520110.27N 0004400.00W
EDCOX	: 521259.68N 0002419.92W
JUMZI	: 521943.58N 0002430.31W
ZAGZO	: 521812.97N 0001352.54W



**DESCENT PLANNING**  
Pilots should plan for possible descent clearance as detailed in the table below.  
**ACTUAL DESCENT CLEARANCE WILL BE AS DIRECTED BY ATC.**

**WARNING**  
For Minimum Descent Rate requirements See ENR 1.1.3.2.

**WARNING**  
Do not proceed beyond ZAGZO without ATC clearance.



ROUTE DESIGNATOR	VIA	ROUTE	LEVELS
FINMA 1N	L15, M605	FINMA - WOBUN - EDCOX - JUMZI, then turn right to intercept course 149° to ZAGZO.	FINMA FL150 ZAGZO FL80
SILVA 1N	M183, Q41, M605	SILVA - WOBUN - EDCOX - JUMZI, then turn right to intercept course 149° to ZAGZO.	ZAGZO FL80

- GENERAL INFORMATION**
- Standard Routes may be varied at the discretion of ATC.
  - Maximum 250KIAS below FL100 unless authorised by ATC.
  - Adhere to maximum speed limits where specified by waypoint constraints.
  - Aircraft may be instructed "Direct to" (waypoint) following radar vectoring.
  - En route holding may be required at WOBUN as directed by ATC.

CHANGE (4/23): AREA MNM ALT FIGURE REVISED.