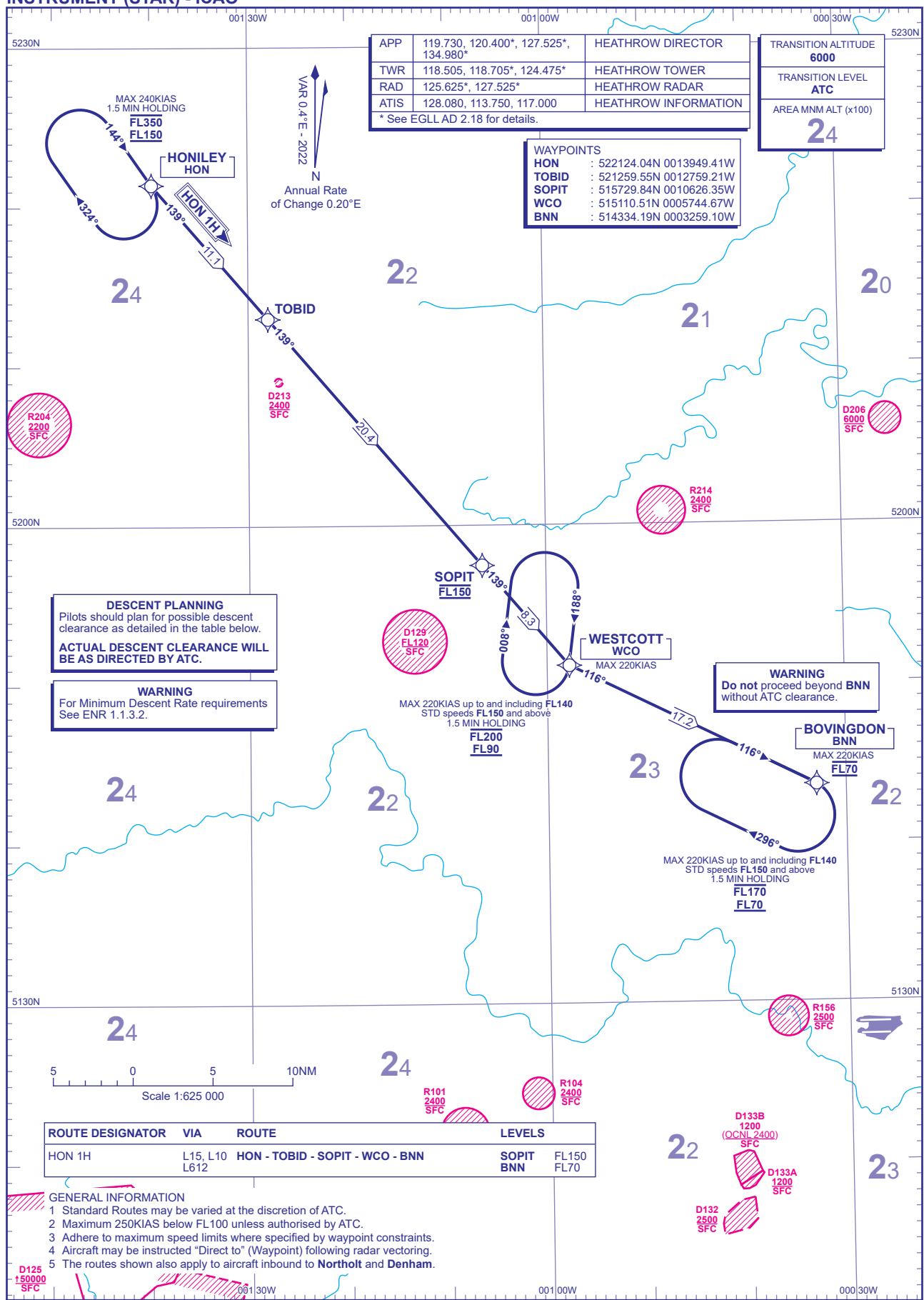


RNAV5 (DME or GNSS) STANDARD ARRIVAL CHART - INSTRUMENT (STAR) - ICAO

DISTANCES IN NAUTICAL MILES
TRACKS ARE MAGNETIC
ALTITUDES AND ELEVATIONS ARE IN FEET

LONDON HEATHROW
HON 1H



APP	119.730, 120.400*, 127.525*, 134.980*	HEATHROW DIRECTOR
TWR	118.505, 118.705*, 124.475*	HEATHROW TOWER
RAD	125.625*, 127.525*	HEATHROW RADAR
ATIS	128.080, 113.750, 117.000	HEATHROW INFORMATION

* See EGLL AD 2.18 for details.

TRANSITION ALTITUDE	6000
TRANSITION LEVEL	ATC
AREA MNM ALT (x100)	24

WAYPOINTS	
HON	: 522124.04N 0013949.41W
TOBID	: 521259.55N 0012759.21W
SOPIT	: 515729.84N 0010626.35W
WCO	: 515110.51N 0005744.67W
BNN	: 514334.19N 0003259.10W

DESCENT PLANNING
Pilots should plan for possible descent clearance as detailed in the table below.
ACTUAL DESCENT CLEARANCE WILL BE AS DIRECTED BY ATC.

WARNING
For Minimum Descent Rate requirements See ENR 1.1.3.2.

WARNING
Do not proceed beyond BNN without ATC clearance.

ROUTE DESIGNATOR	VIA	ROUTE	LEVELS
HON 1H	L15, L10 L612	HON - TOBID - SOPIT - WCO - BNN	SOPIT FL150 BNN FL70

- GENERAL INFORMATION**
- Standard Routes may be varied at the discretion of ATC.
 - Maximum 250KIAS below FL100 unless authorised by ATC.
 - Adhere to maximum speed limits where specified by waypoint constraints.
 - Aircraft may be instructed "Direct to" (Waypoint) following radar vectoring.
 - The routes shown also apply to aircraft inbound to **Northolt** and **Denham**.

CHANGE (4/23): AREA MNM ALT FIGURE REVISED.