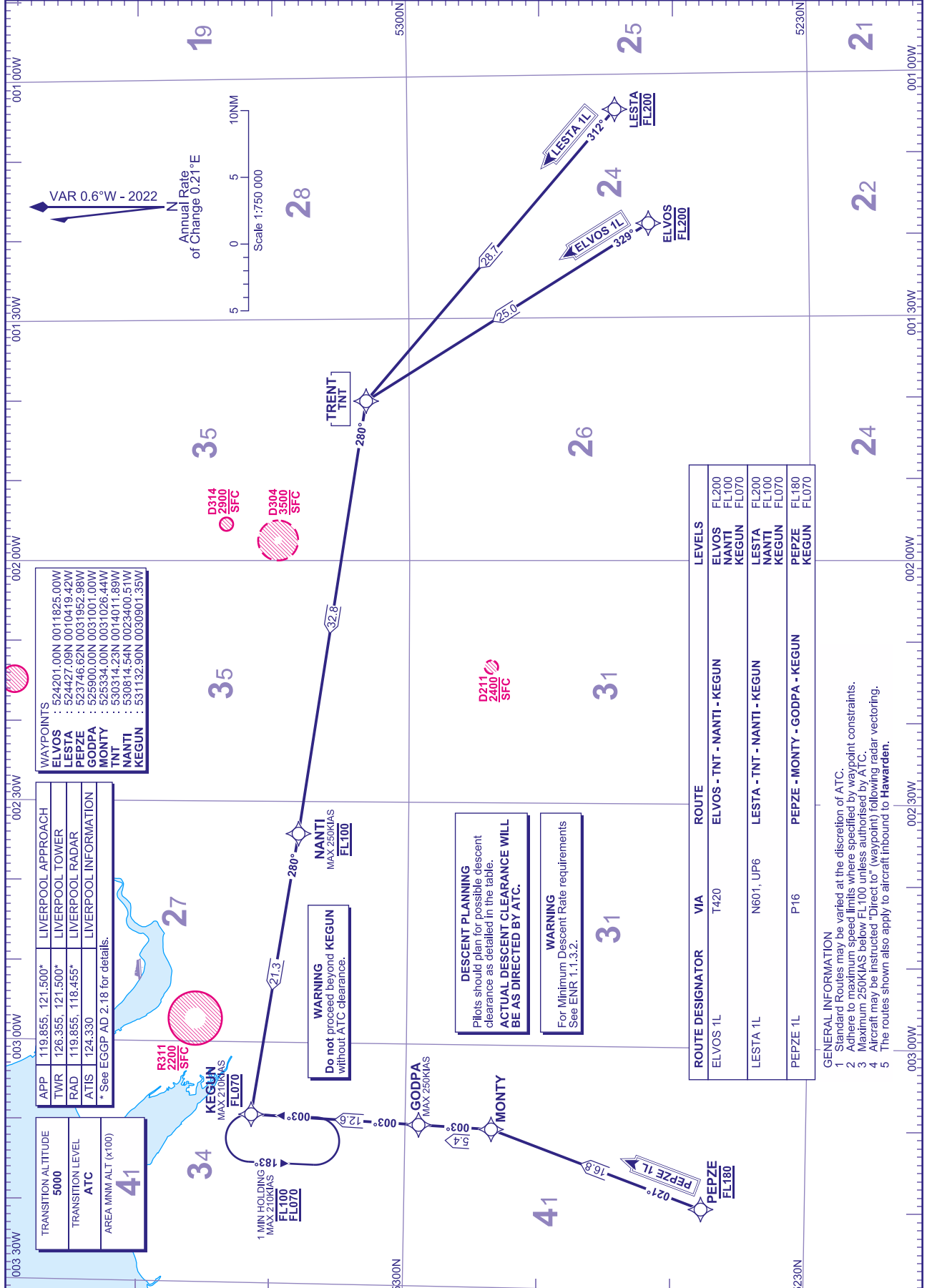


RNAV1 (DME/DME or GNSS)  
STANDARD ARRIVAL CHART -  
INSTRUMENT (STAR) - ICAO

DISTANCES IN NAUTICAL MILES  
TRACKS ARE MAGNETIC  
ALTITUDES AND ELEVATIONS ARE IN FEET

LIVERPOOL  
ELVOS 1L LESTA 1L  
PEPZE 1L



WAYPOINTS

ELVOS	: 524201.00N 0011825.00W
LESTA	: 524427.09N 0010419.42W
PEPZE	: 523746.62N 0031952.98W
GODPA	: 525900.00N 0031001.00W
MONTY	: 525334.00N 0031026.44W
TNT	: 530314.23N 0014011.89W
NANTI	: 530814.54N 0023400.51W
KEGUN	: 531132.90N 0030901.35W

APP	119.855, 121.500*	LIVERPOOL APPROACH
TWR	126.355, 121.500*	LIVERPOOL TOWER
RAD	119.855, 118.455*	LIVERPOOL RADAR
ATIS	124.330	LIVERPOOL INFORMATION

\* See EGGP AD 2.18 for details.

TRANSITION ALTITUDE	5000
TRANSITION LEVEL	ATC
AREA MNM ALT (x100)	41

**WARNING**  
Do not proceed beyond KEGUN without ATC clearance.

**DESCENT PLANNING**  
Pilots should plan for possible descent clearance as detailed in the table.  
**ACTUAL DESCENT CLEARANCE WILL BE AS DIRECTED BY ATC.**

**WARNING**  
For Minimum Descent Rate requirements See ENR 1.1.3.2.

ROUTE DESIGNATOR	VIA	ROUTE	LEVELS
ELVOS 1L	T420	ELVOS - TNT - NANTI - KEGUN	FL200 FL100 FL070
LESTA 1L	N601, UP6	LESTA - TNT - NANTI - KEGUN	FL200 FL100 FL070
PEPZE 1L	P16	PEPZE - MONTY - GODPA - KEGUN	FL180 FL070

**GENERAL INFORMATION**

- Standard Routes may be varied at the discretion of ATC.
- Adhere to maximum speed limits where specified by waypoint constraints.
- Maximum 250KIAS below FL100 unless authorised by ATC.
- Aircraft may be instructed "Direct to", (waypoint) following radar vectoring.
- The routes shown also apply to aircraft inbound to Hawarden.

CHANGE (4/23): AREA MNM ALT FIGURE REVISED.

AERO INFO DATE 24 JAN 23

AD 2-EGGP-7-3