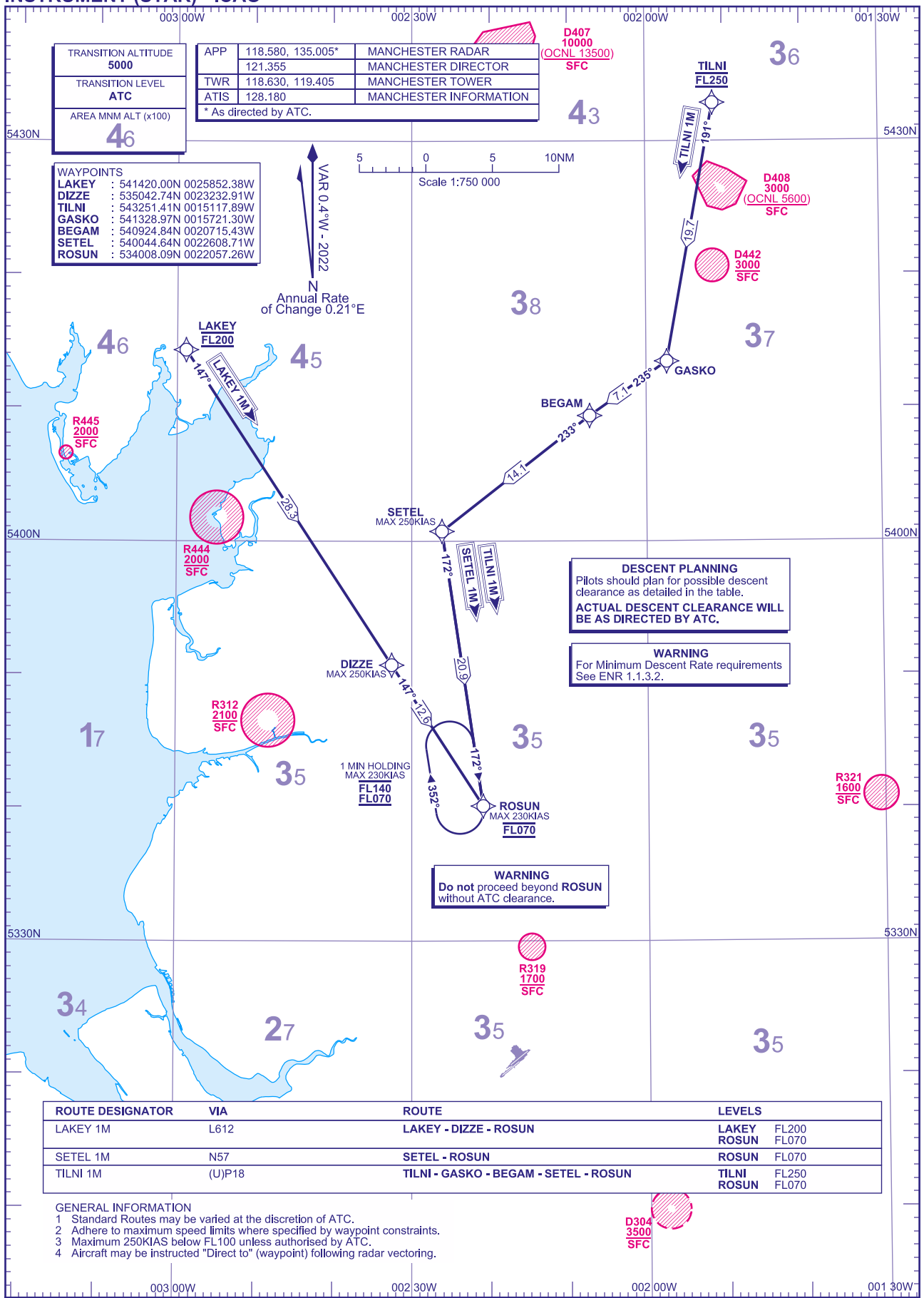


**RNAV1 (DME/DME or GNSS)  
STANDARD ARRIVAL CHART -  
INSTRUMENT (STAR) - ICAO**

DISTANCES IN NAUTICAL MILES  
TRACKS ARE MAGNETIC  
ALTITUDES AND ELEVATIONS ARE IN FEET

**LAKEY 1M SETEL 1M TILNI 1M**



TRANSITION ALTITUDE	5000
TRANSITION LEVEL	ATC
AREA MNM ALT (x100)	46

APP	118.580, 135.005*	MANCHESTER RADAR
	121.355	MANCHESTER DIRECTOR
TWR	118.630, 119.405	MANCHESTER TOWER
ATIS	128.180	MANCHESTER INFORMATION
* As directed by ATC.		

WAYPOINTS	
LAKEY	: 541420.00N 0025852.38W
DIZZE	: 535042.74N 0023232.91W
TILNI	: 543251.41N 0015117.89W
GASKO	: 541328.97N 0015721.30W
BEGAM	: 540924.84N 0020715.43W
SETEL	: 540044.64N 0022608.71W
ROSUN	: 534008.09N 0022057.26W

**DESCENT PLANNING**  
Pilots should plan for possible descent clearance as detailed in the table.  
**ACTUAL DESCENT CLEARANCE WILL BE AS DIRECTED BY ATC.**

**WARNING**  
For Minimum Descent Rate requirements See ENR 1.1.3.2.

**WARNING**  
Do not proceed beyond ROSUN without ATC clearance.

ROUTE DESIGNATOR	VIA	ROUTE	LEVELS
LAKEY 1M	L612	LAKEY - DIZZE - ROSUN	LAKEY FL200 ROSUN FL070
SETEL 1M	N57	SETEL - ROSUN	ROSUN FL070
TILNI 1M	(U)P18	TILNI - GASKO - BEGAM - SETEL - ROSUN	TILNI FL250 ROSUN FL070

- GENERAL INFORMATION**
- Standard Routes may be varied at the discretion of ATC.
  - Adhere to maximum speed limits where specified by waypoint constraints.
  - Maximum 250KIAS below FL100 unless authorised by ATC.
  - Aircraft may be instructed "Direct to" (waypoint) following radar vectoring.