

RNAV1 (DME/DME or GNSS) APPROACH TRANSITIONS CHART - INSTRUMENT - ICAO

DISTANCES IN NAUTICAL MILES
TRACKS ARE MAGNETIC
ALTITUDES AND ELEVATIONS ARE IN FEET

LONDON LUTON RWY 07
ZAGZO 1Q

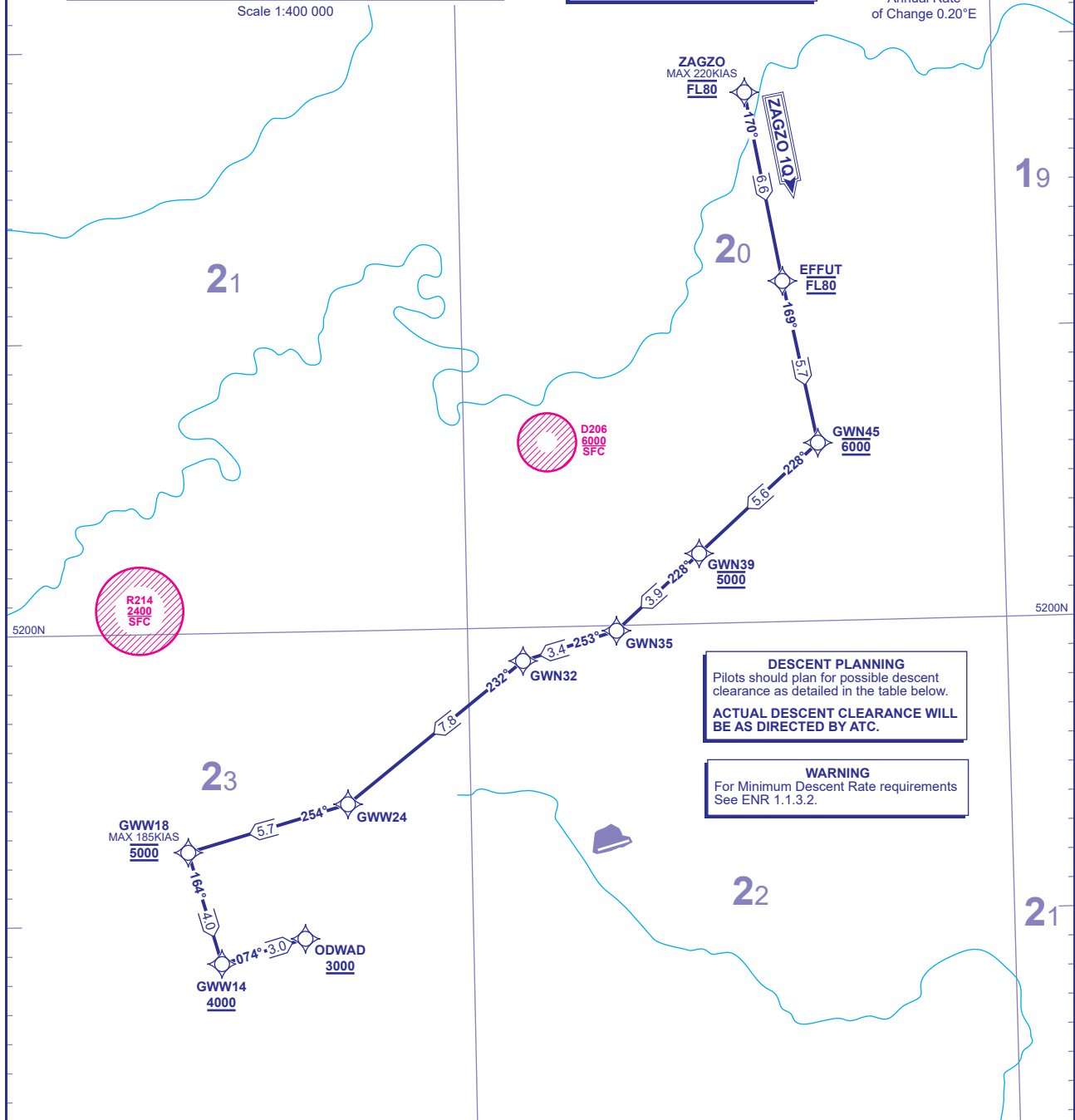
TRANSITION ALTITUDE	6000
TRANSITION LEVEL	ATC
AREA MNM ALT (x100)	23

APP	129.550	LUTON RADAR
TWR	132.555, 126.725*	LUTON TOWER
RAD	128.750*	LUTON DIRECTOR
ATIS	120.580	LUTON INFORMATION
* See EGGW AD 2.18 for details.		

WAYPOINTS	
ZAGZO	: 521812.97N 0001352.54W
EFFUT	: 521142.36N 0001200.36W
GWN45	: 520607.61N 0001015.06W
GWN39	: 520225.12N 0001700.84W
GWN35	: 515950.08N 0002142.52W
GWN32	: 515852.03N 0002656.67W
GWW24	: 515404.06N 0003649.52W
GWW18	: 515230.10N 0004544.14W
GWW14	: 514839.58N 0004358.20W
ODWAD	: 514928.66N 0003919.43W

VAR 0.4°E - 2022
N
Annual Rate of Change 0.20°E

Scale 1:400 000



DESCENT PLANNING
Pilots should plan for possible descent clearance as detailed in the table below.
ACTUAL DESCENT CLEARANCE WILL BE AS DIRECTED BY ATC.

WARNING
For Minimum Descent Rate requirements See ENR 1.1.3.2.

ROUTE DESIGNATOR	ROUTE	LEVELS
ZAGZO 1Q	ZAGZO - EFFUT - GWN45 - GWN39 - GWN35 - GWN32 - GWW24 - GWW18 - GWW14 - ODWAD	ZAGZO FL80 EFFUT FL80 GWN45 6000 GWN39 5000 GWW18 5000 GWW14 +4000 ODWAD +3000

CHANGE (13/22): AREA MNM ALTITUDE REVISED.

AERO INFO DATE 11 OCT 22

AD 2-EGGW-7-14