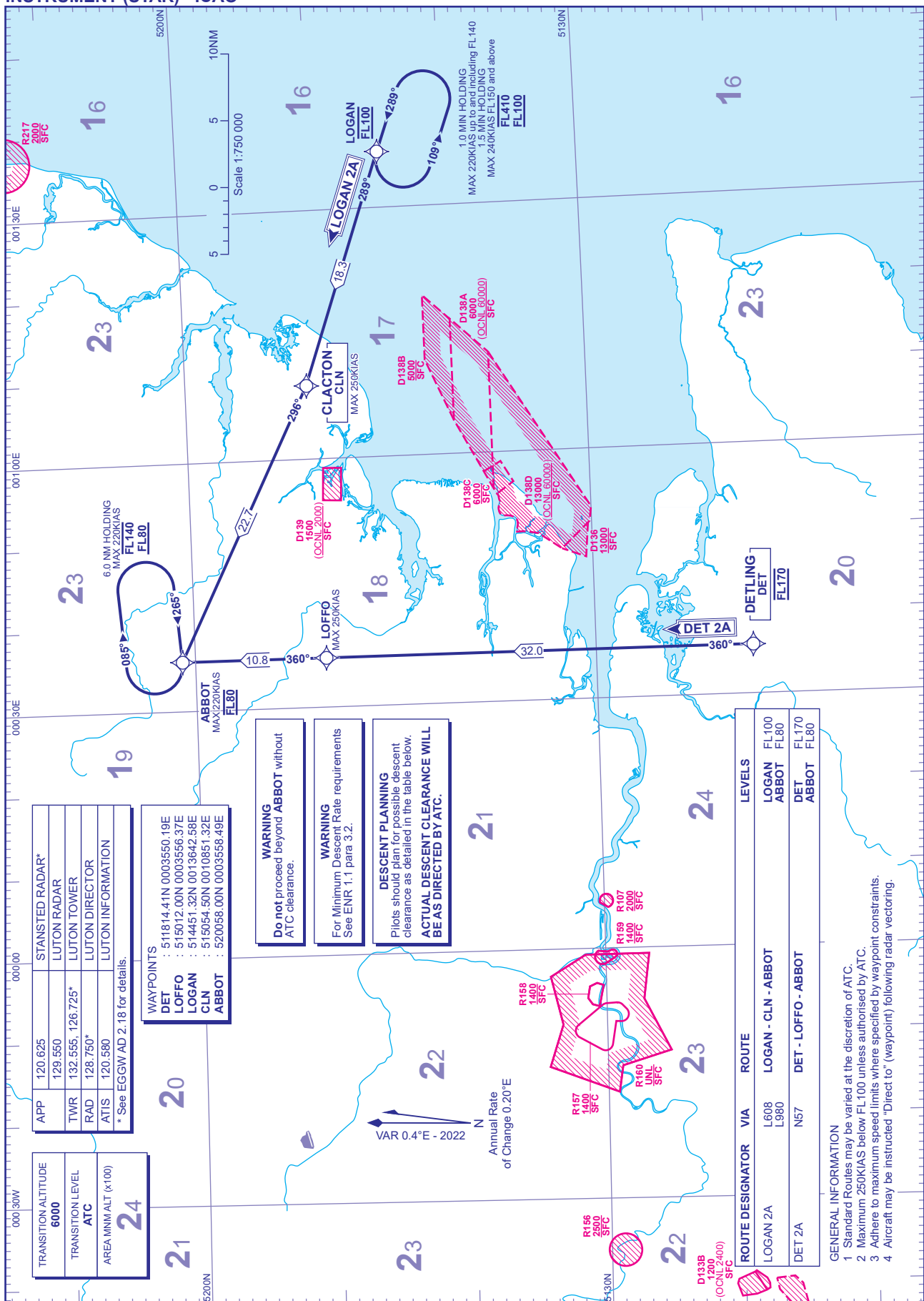


RNAV5 (DME/DME or GNSS) STANDARD ARRIVAL CHART - INSTRUMENT (STAR) - ICAO

DISTANCES IN NAUTICAL MILES
TRACKS ARE MAGNETIC
ALTITUDES AND ELEVATIONS ARE IN FEET

**LONDON LUTON
LOGAN 2A DET 2A**



APP	120.625	STANSTED RADAR*
TWR	129.550	LUTON RADAR
RAD	132.555; 126.725*	LUTON TOWER
ATIS	128.750*	LUTON DIRECTOR
	120.580	LUTON INFORMATION

* See EGGW AD 2.18 for details.

WAYPOINTS	: 511814.41N 0003550.19E
DET	: 515012.00N 0003556.37E
LOFFO	: 514451.32N 0013642.58E
LOGAN	: 515054.50N 0010851.32E
CLN	: 5200568.00N 00035568.49E
ABBOT	: 5200568.00N 00035568.49E

WARNING
Do not proceed beyond ABBOT without ATC clearances.

WARNING
For Minimum Descent Rate requirements See ENR 1.1 para 3.2.

DESCENT PLANNING
Pilots should plan for possible descent clearance as detailed in the table below.
ACTUAL DESCENT CLEARANCE WILL BE AS DIRECTED BY ATC.

ROUTE DESIGNATOR	VIA	ROUTE	LEVELS
LOGAN 2A	L608 L980	LOGAN - CLN - ABBOT	LOGAN FL100 ABBOT FL80
DET 2A	N67	DET - LOFFO - ABBOT	DET FL170 ABBOT FL80

- GENERAL INFORMATION**
- Standard Routes may be varied at the discretion of ATC.
 - Maximum 250KIAS below FL100 unless authorised by ATC.
 - Adhere to maximum speed limits where specified by waypoint constraints.
 - Aircraft may be instructed "Direct to" (waypoint) following radar vectoring.

CHANGE (13/22): AREA MNM ALTITUDE REVISED.