

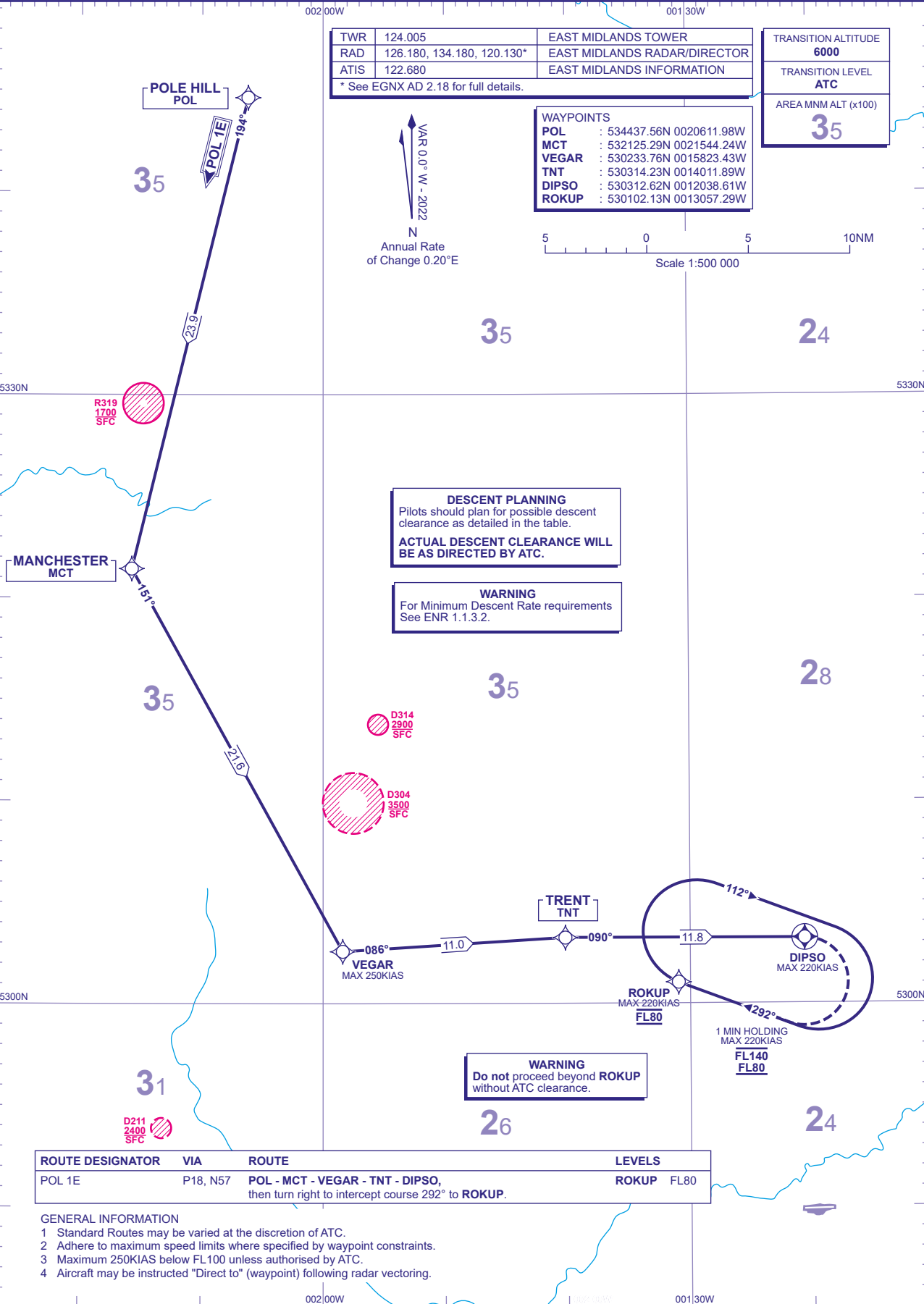
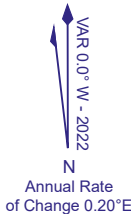
TWR	124.005	EAST MIDLANDS TOWER
RAD	126.180, 134.180, 120.130*	EAST MIDLANDS RADAR/DIRECTOR
ATIS	122.680	EAST MIDLANDS INFORMATION

* See EGNX AD 2.18 for full details.

TRANSITION ALTITUDE	6000
TRANSITION LEVEL	ATC
AREA MNM ALT (x100)	35

WAYPOINTS

POL	: 534437.56N 0020611.98W
MCT	: 532125.29N 0021544.24W
VEGAR	: 530233.76N 0015823.43W
TNT	: 530314.23N 0014011.89W
DIPSO	: 530312.62N 0012038.61W
ROKUP	: 530102.13N 0013057.29W



DESCENT PLANNING
Pilots should plan for possible descent clearance as detailed in the table.
ACTUAL DESCENT CLEARANCE WILL BE AS DIRECTED BY ATC.

WARNING
For Minimum Descent Rate requirements
See ENR 1.1.3.2.

WARNING
Do not proceed beyond ROKUP
without ATC clearance.

ROUTE DESIGNATOR	VIA	ROUTE	LEVELS
POL 1E	P18, N57	POL - MCT - VEGAR - TNT - DIPSO, then turn right to intercept course 292° to ROKUP.	ROKUP FL80

- GENERAL INFORMATION
- Standard Routes may be varied at the discretion of ATC.
 - Adhere to maximum speed limits where specified by waypoint constraints.
 - Maximum 250KIAS below FL100 unless authorised by ATC.
 - Aircraft may be instructed "Direct to" (waypoint) following radar vectoring.