

TRANSITION ALTITUDE	6000
TRANSITION LEVEL	ATC
AREA MIN ALT (x100)	45

TWR	124.005	EAST MIDLANDS TOWER
RAD	126.180, 134.180, 120.130*	EAST MIDLANDS RADAR/DIRECTOR
ATIS	122.680	EAST MIDLANDS INFORMATION

\* See EGXN AD 2.18 for full details.

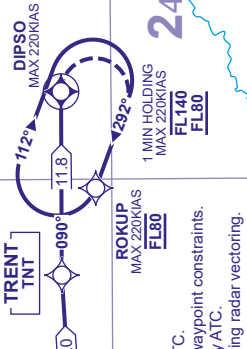
WAYPOINTS	
LIBSO	: 533129.33N 0000536.32E
FIZED	: 533444.87N 0003917.40W
VEGUS	: 532400.54N 0002110.76W
GOLES	: 533629.08N 0010500.37W
DESIG	: 533136.13N 0015333.70W
BEGAM	: 540924.84N 0020715.43W
CROFT	: 533736.89N 0023219.85W
MCT	: 532125.29N 0021544.24W
VEGAR	: 530233.76N 0015823.43W
TNT	: 530314.23N 0014011.89W
DIPSO	: 530312.62N 0012038.61W
ROKUP	: 530102.13N 0013057.29W

VAR 0.0° W - 2022  
Annual Rate of Change 0.20°E

**DESCENT PLANNING**  
Pilots should plan for possible descent clearance as detailed in the table.  
**ACTUAL DESCENT CLEARANCE WILL BE AS DIRECTED BY ATC.**

**WARNING**  
For Minimum Descent Rate requirements See ENR 1.1.3.2.

**WARNING**  
Do not proceed beyond ROKUP without ATC clearance.



ROUTE DESIGNATOR	VIA	ROUTE	LEVELS
BEGAM 1E	UP16	BEGAM - MCT - VEGAR - TNT - DIPSO, then turn right to intercept course 292° to ROKUP.	MCT FL200 ROKUP FL80
CROFT 1E	(UL)612	CROFT - MCT - VEGAR - TNT - DIPSO, then turn right to intercept course 292° to ROKUP.	MCT FL200 ROKUP FL80
LIBSO 1E	UL975	LIBSO - FIZED - GOLES - DESIG - MCT - VEGAR - TNT - DIPSO, then turn right to intercept course 292° to ROKUP.	LIBSO FL290 MCT FL200 ROKUP FL80
VEGUS 1E	Y70	VEGUS - GOLES - DESIG - MCT - VEGAR - TNT - DIPSO, then turn right to intercept course 292° to ROKUP.	VEGUS FL290 MCT FL200 ROKUP FL80

- GENERAL INFORMATION**
- Standard Routes may be varied at the discretion of ATC.
  - Adhere to maximum speed limits where specified by waypoint constraints.
  - Maximum 250KIAS below FL100 unless authorised by ATC.
  - Aircraft may be instructed "Direct to" (waypoint) following radar vectoring.