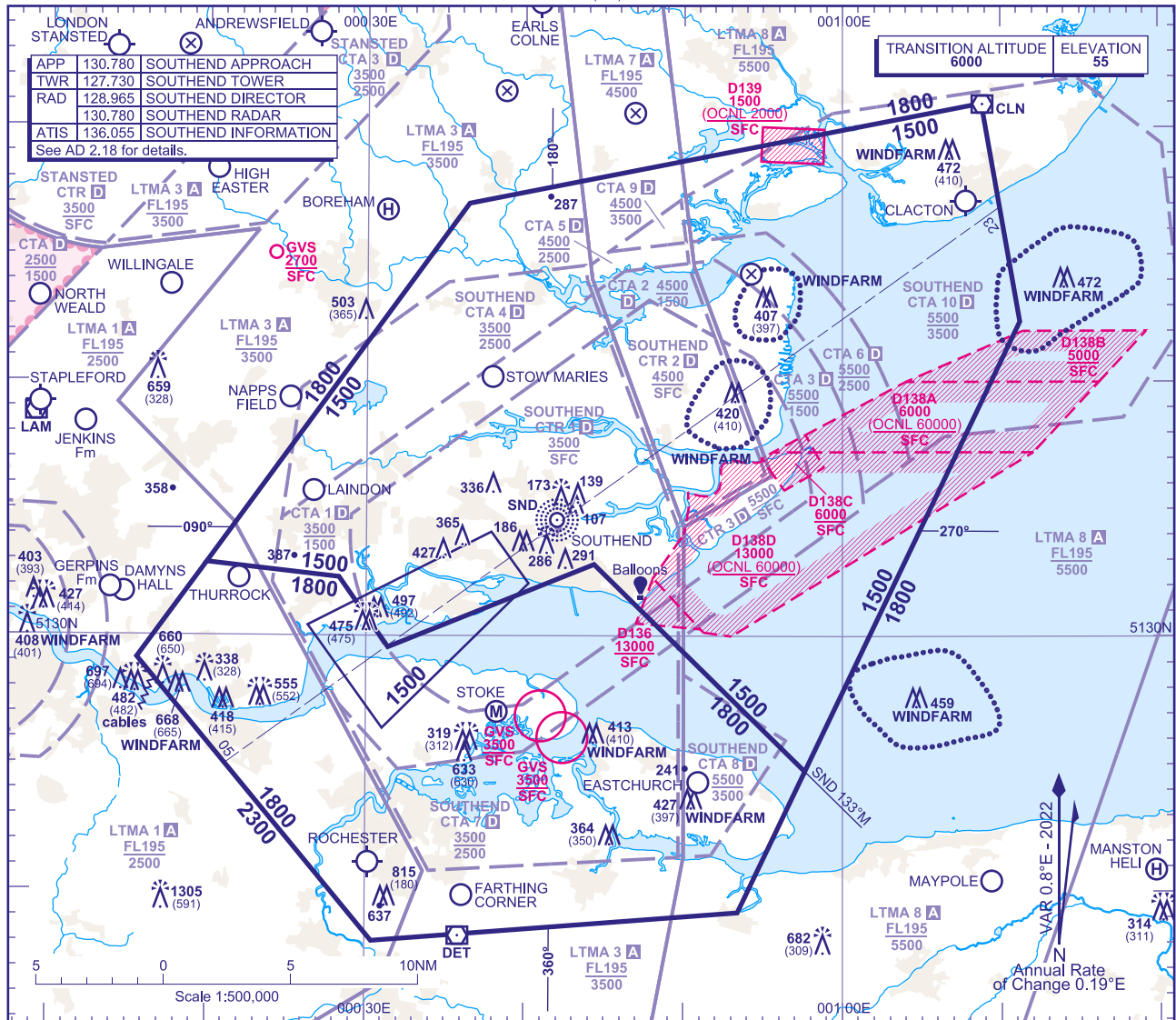


# ATC SURVEILLANCE MINIMUM ALTITUDE CHART - ICAO

BEARINGS, TRACKS AND RADIALS ARE MAGNETIC  
ELEVATIONS IN FEET AMSL 1305  
HEIGHTS IN FEET AGL (591)

SOUTHEND



## MINIMUM INITIAL ALTITUDE

Within the ATC Surveillance Minimum Altitude area the minimum initial altitude to be allocated by the approach surveillance controller is:

- 1500 in the sector defined by the lateral limits; 513252N 0001957E - 514659N 0003625E - 515056N 0010848E - 514222N 0011113E - 512442N 0005738E - 513249N 0004421E - 512933N 0003123E - 513218N 0002817E - 513252N 0001957E.
- 1800 in the sector defined by the lateral limits; 512907N 0001535E - 513252N 0001957E - 513218N 0002817E - 512933N 0003123E - 513249N 0004421E - 512442N 0005738E - 511909N 0005324E - 511801N 0003025E - 512907N 0001535E.

## OUTSIDE THE DESIGNATED ATC SURVEILLANCE MINIMUM ALTITUDE AREA

The minimum altitude to be allocated by the approach surveillance controller will be either the Minimum Sector Altitude, or 1000 above any fixed obstacles:

- within 5NM of the aircraft, and
- within the sector 15NM ahead of and within 20° either side of the aircraft's track.

## LOSS OF COMMUNICATION PROCEDURES

### Initial Approach

Continue visually or by means of an appropriate approved final approach aid. If not possible proceed at 2000, or last assigned level if higher to NDB(L) SND†.

### Intermediate and Final Approach

Continue visually or by means of an appropriate final approach aid. If not possible follow the Missed Approach Procedure to NDB(L) SND†.

† In all cases where the aircraft returns to the holding facility the procedure to be adopted is the Radio Failure Procedure detailed at ENR 1.1.3.

## GENERAL INFORMATION

- Levels shown are based on QNH.
- Only significant obstacles and dominant spot heights are shown.
- The minimum levels shown within the ATC Surveillance Minimum Altitude Area are in conformance with the Standard European Rules of the Air - SERA.5015.
- Minimum Sector Altitudes are based on obstacles and spot heights within 25NM of NDB SND.
- Controlled airspace with a base in excess of 5000 or FL55, as appropriate, is not shown.
- This chart may only be used for cross-checking of altitudes assigned when in receipt of an ATC Surveillance service.**
- When vectoring an aircraft within the Final Approach Vectoring Area descent clearance below the SMAA to the FAVA altitude may only be Issued if the aircraft is either established on the final approach track or on an Intercept of 40° or less, and In the case of Instrument approaches other than SRA is cleared to intercept the final approach track.**