

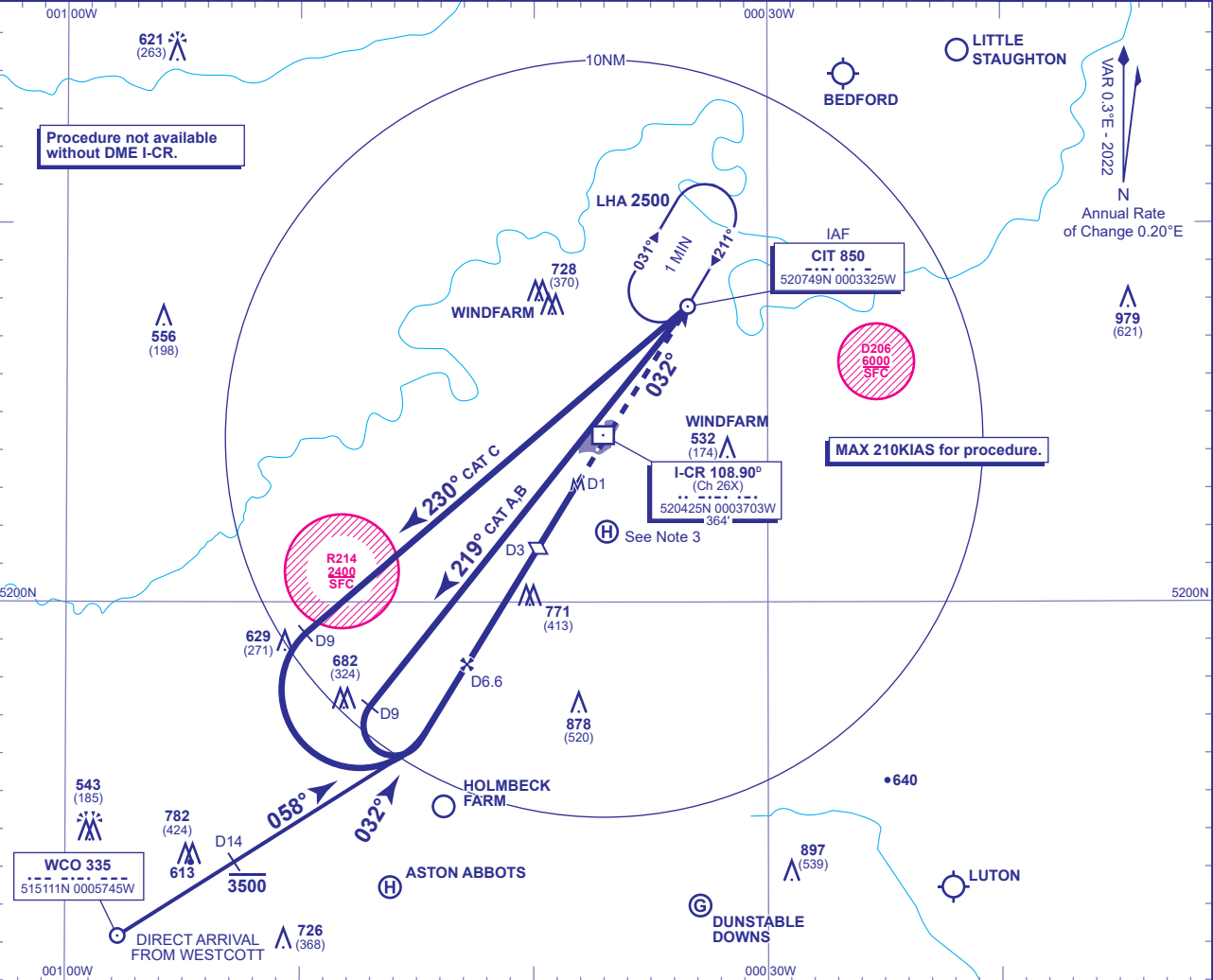
# PROCEDURE APPROACH CHART - ICAO

**CRANFIELD  
NDB(L)/DME  
RWY 03**  
(ACFT CAT A,B,C)



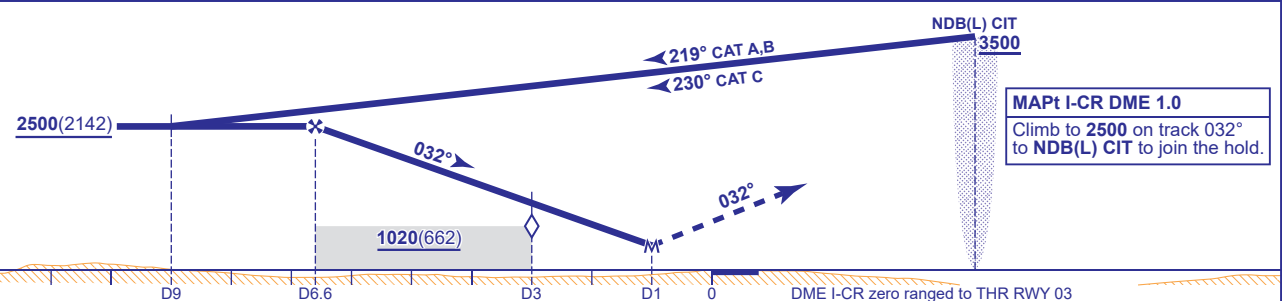
APP	122.855	CRANFIELD APPROACH	AD ELEVATION	360
TWR	134.930, 122.855	CRANFIELD TOWER	THR ELEVATION	358
			OBSTACLE ELEVATION	979 AMSL (621) (ABOVE THR)
			BEARINGS ARE MAGNETIC	

TRANSITION ALTITUDE  
**6000**



RECOMMENDED PROFILE Gradient 5.2%, 320FT/NM

NM	6	5	4	3 (SDF)	2
ALT(HGT)	2310(1952)	1990(1632)	1680(1322)	1360(1002)	1040(682)



Aircraft Category		A	B	C	Rate of descent					
OCA (OCH)	Procedure	730(372)	730(372)	730(372)		G/S KT	160	140	120	100
VM(C)OCA (OCH AAL)	Total Area	800(440)	970(610)	1150(790)	FT/MIN	850	740	630	530	420

- NOTE 1** CIT NDB(L) hold restrictions: MAX holding level 5000, MAX 180KIAS.  
**NOTE 2** Intensive glider activity takes place beneath the LTMA in VMC and in IMC.  
**NOTE 3** Occasional helicopter activity at Helimech Helipad (520152N 0003653W).  
**NOTE 4** Aircraft may be requested to report crossing the DTY115 radial.

CHANGE (8/22): NOTE 3 HELI & LIGHT AIRCRAFT SITES REVISED.