

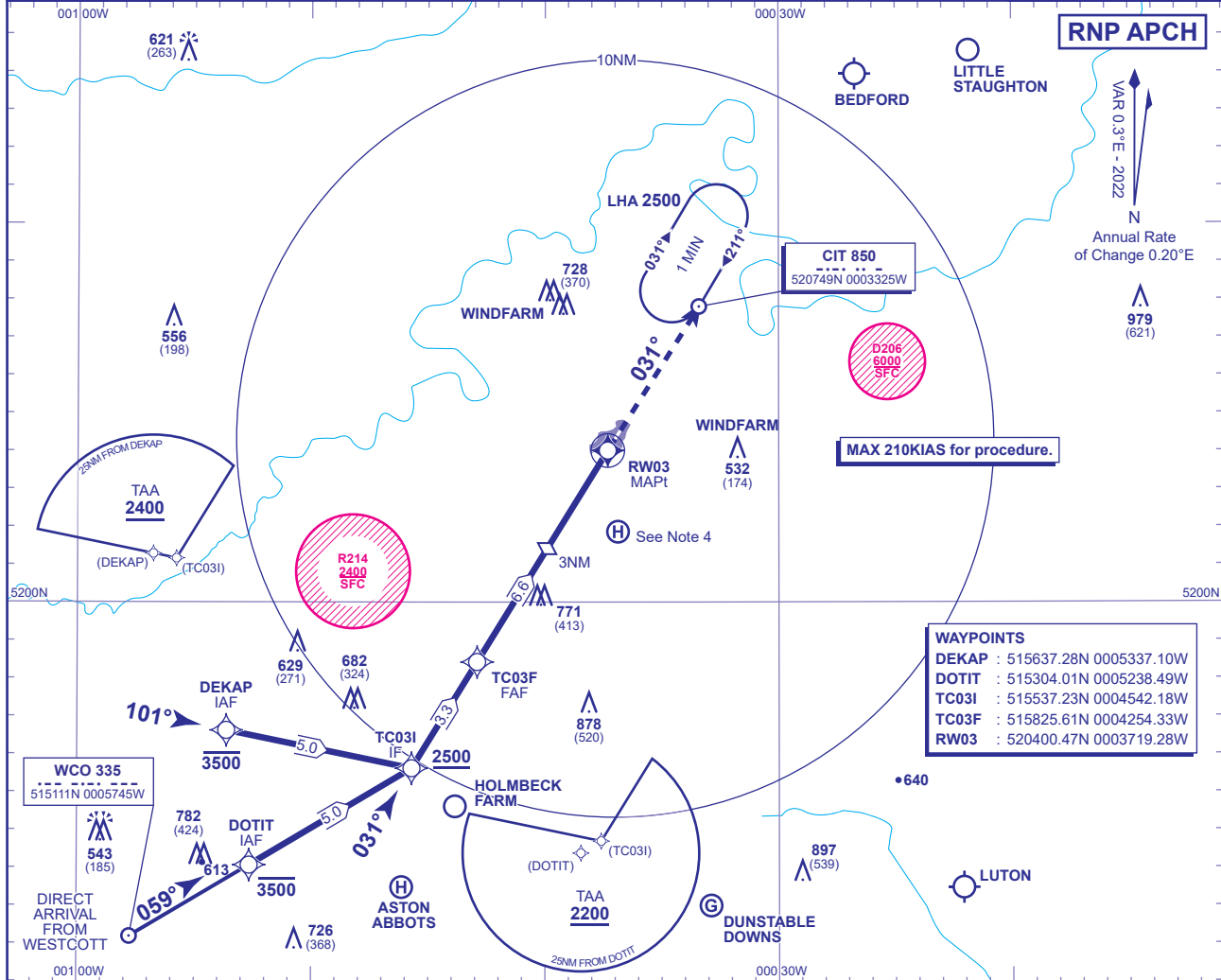
# INSTRUMENT APPROACH CHART - ICAO

**CRANFIELD**  
**RNP**  
**RWY 03**  
 (ACFT CAT A,B,C)

24  
 MSA 25NM NDB CIT

APP	122.855	CRANFIELD APPROACH	AD ELEVATION	360
TWR	134.930, 122.855	CRANFIELD TOWER	THR ELEVATION	358
			OBSTACLE ELEVATION	979 AMSL (621) (ABOVE THR)
			BEARINGS ARE MAGNETIC	

TRANSITION ALTITUDE  
**6000**

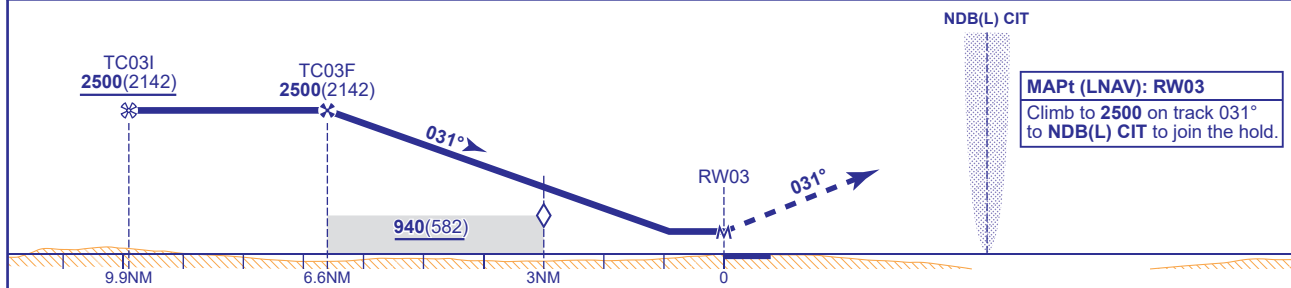


**WAYPOINTS**

DEKAP	: 515637.28N 0005337.10W
DOTIT	: 515304.01N 0005238.49W
TC03I	: 515537.23N 0004542.18W
TC03F	: 515825.61N 0004254.33W
RW03	: 520400.47N 0003719.28W

**RECOMMENDED PROFILE** Gradient 5.2%, 320FT/NM

NM	6	5	4	3 (SDF)	2	1
ALT(HGT)	2320(1962)	2000(1642)	1680(1322)	1360(1002)	1040(682)	730(372)



Aircraft Category	A	B	C	Rate of descent	G/S KT	160	140	120	100	80
OCA (OCH)	LNAV	690(332)	690(332)		690(332)	FT/MIN	850	740	630	530
VM(C)OCA (OCH AAL)	Total Area	800(440)	970(610)	1150(790)						

**NOTE 1** CIT NDB(L) hold restrictions: MAX holding level 5000, MAX 180KIAS.  
**NOTE 2** Missed Approach Procedure uses **conventional navigation aids** and is not available without **NDB(L) CIT**.  
**NOTE 3** Intensive glider activity takes place beneath the LTMA in VMC and in IMC.  
**NOTE 4** Occasional helicopter activity at Helimech Helipad (520152N 0003653W).  
**NOTE 5** Aircraft may be requested to report crossing the DTY115 radial.