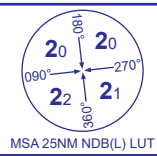


INSTRUMENT APPROACH CHART - ICAO

LONDON LUTON

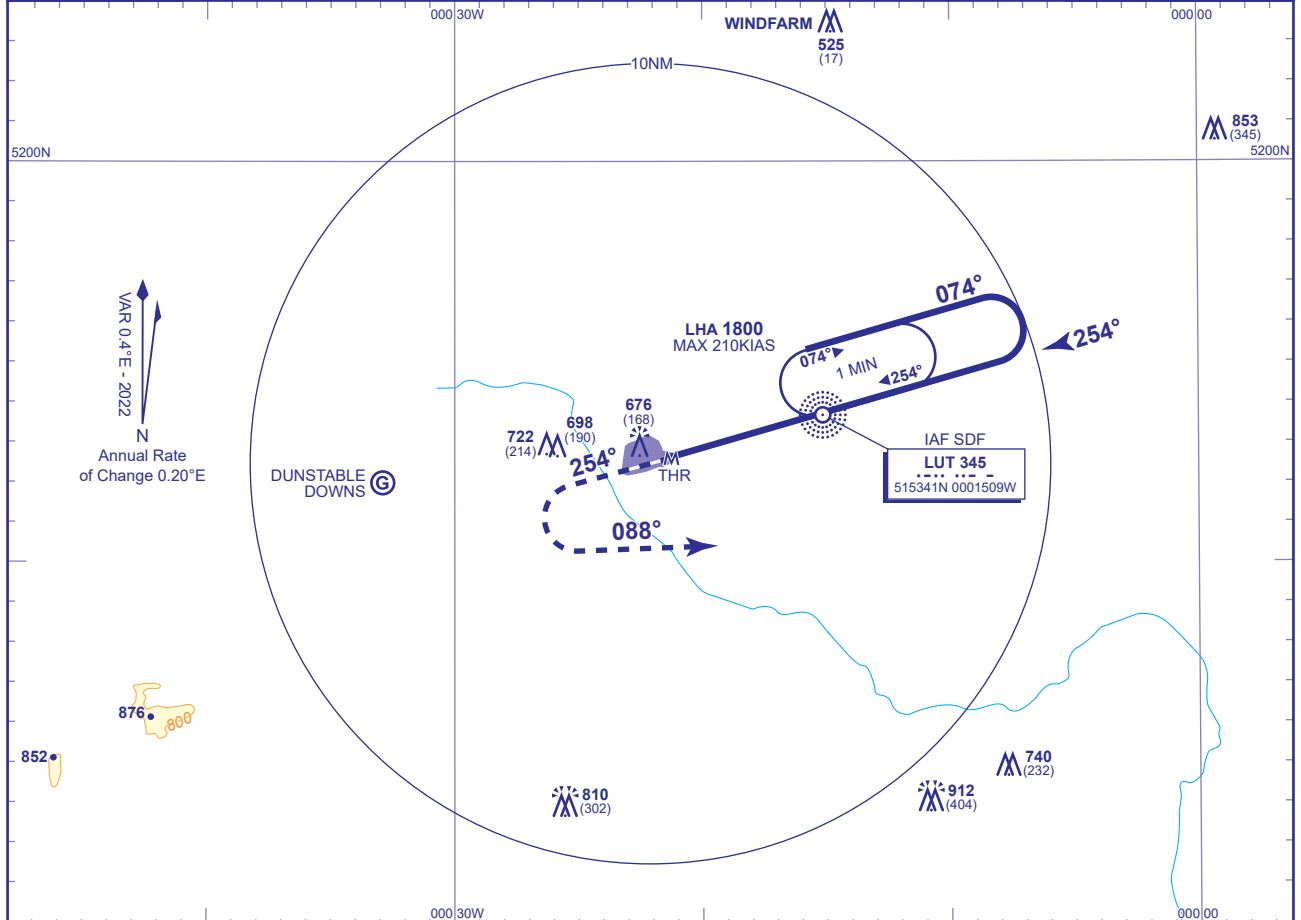
**NDB(L)
RWY 25**

(ACFT CAT A,B,C,D)



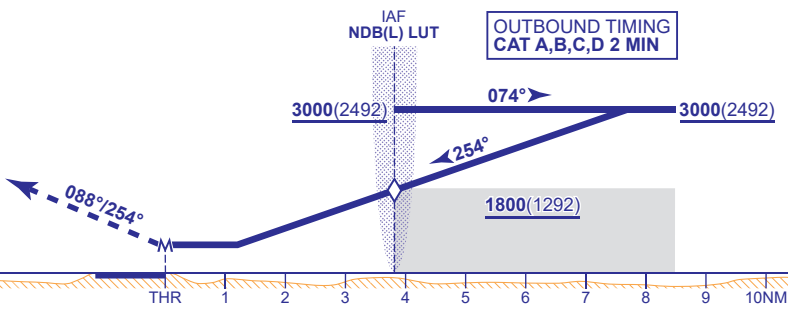
APP	129.550	LUTON RADAR	AD ELEVATION	527
TWR	132.555, 126.725	LUTON TOWER	THR ELEVATION	508
	121.755	LUTON GROUND	OBSTACLE ELEVATION	912 AMSL (404) (ABOVE THR)
RAD	128.750	LUTON DIRECTOR		
ATIS	120.580	ARRIVAL INFORMATION	BEARINGS ARE MAGNETIC	

TRANSITION ALTITUDE
6000



RECOMMENDED PROFILE Gradient 5.2%, 316FT/NM

MAPT 3.9NM after passing NDB(L) LUT (THR RWY 25)
Climb to 3000. Straight ahead to 1500, then turn left onto track 088°, continuing climb to 3000 then continue as directed.
RCF: Follow missed approach procedure to 3000 then return to NDB(L) LUT at 3000.



Aircraft Category		A	B	C	D	Rate of descent	G/S KT	160	140	120	100	80
OCA (OCH)	Procedure	930(422)	930(422)	930(422)	930(422)		FT/MIN	840	740	630	530	420
VM(C)OCA (OCH AAL)	Total Area	1100(573)	1100(573)	1300(773)	1300(773)	NDB(L) to MAPT	MIN:SEC	1:28	1:40	1:57	2:20	2:56

NOTE Aircraft will normally be required to hold not lower than 3000.

CHANGE (2/22): FREQUENCIES. VM(C)OCA CAT A MINIMA. LHA. AD ELEVATION.