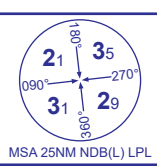


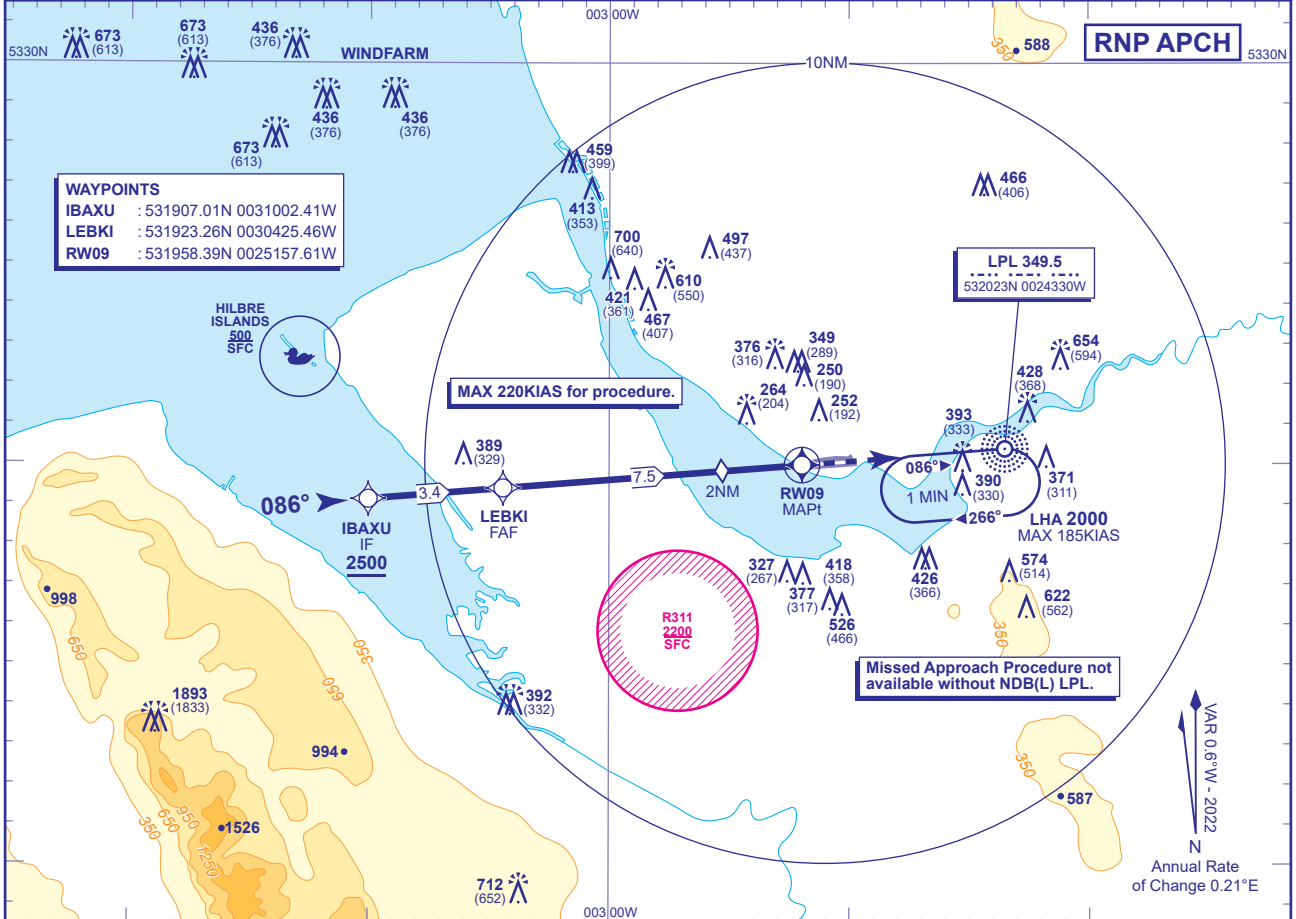
INSTRUMENT APPROACH CHART - ICAO

LIVERPOOL
RNP
RWY 09
 (ACFT CAT A,B,C,D)



APP	119.855	LIVERPOOL APPROACH	AD ELEVATION	81
TWR	126.355	LIVERPOOL TOWER	THR ELEVATION	60
	121.955	LIVERPOOL GROUND	OBSTACLE ELEVATION	1893 AMSL (1833) (ABOVE THR)
RAD	118.455, 119.855	LIVERPOOL RADAR		
ATIS	124.330	LIVERPOOL INFORMATION	BEARINGS ARE MAGNETIC	

MIN TEMP	-15°C
TRANSITION ALTITUDE	5000

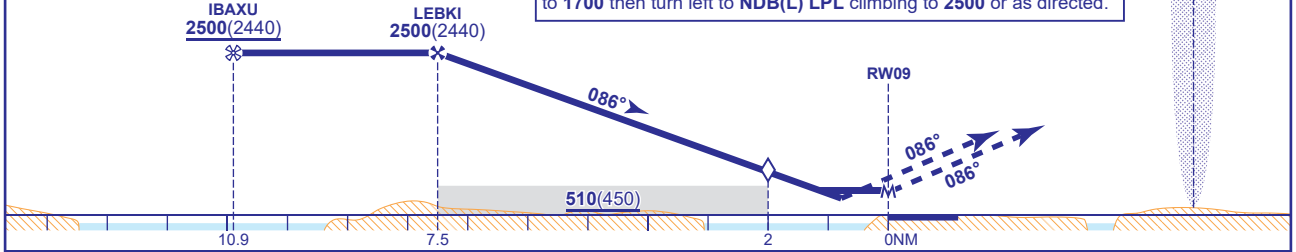


RECOMMENDED PROFILE VERTICAL PATH ANGLE 3.0° (LNAV 5.2%), 320FT/NM

NM to RWY09	7	6	5	4	3	2 (SDF)	1
ALT(HGT)	2340(2280)	2020(1960)	1700(1640)	1390(1330)	1070(1010)	750(690)	430(370)

Arrival not below 2500 or higher MSA.

MAPt (LNAV) RWY09
 Climb straight ahead to NDB(L) LPL climbing to 2500. Aircraft which achieve 1700 (7% climb grad req) by NDB(L) LPL enter hold and continue climb to 2500 or as directed. Aircraft unable to achieve 1700 by NDB(L) LPL inform ATC and continue on NDB(L) LPL QDR 086° to 1700 then turn left to NDB(L) LPL climbing to 2500 or as directed.



Aircraft Category		Aircraft Category				Rate of descent	Rate of descent				
		A	B	C	D		G/S KT	FT/MIN	160	140	120
OCA (OCH)	LNAV/VNAV	360(300)	360(300)	360(300)	360(300)		160	140	120	100	80
	LNAV	430(370)	430(370)	430(370)	430(370)		850	740	640	530	420
VM(C)OCA (OCH AAL)	Total Area	550(469)	670(589)	930(849)	970(889)						

NOTE
 1 Missed approach shall be converted to a conventional missed approach upon reaching 1700.
 2 Continuous final descent (in accordance with EU-OPS 1.43(d)) is available by request to ATC.
 3 Procedure is only available when Liverpool RADAR is operational.
 4 Pilots to request RNP approach on first call.

CHANGE (6/21): MAG VAR. MAG TRACKS. VM(C)OCA (OCH AAL) CAT D MINIMA REVISED.