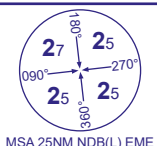


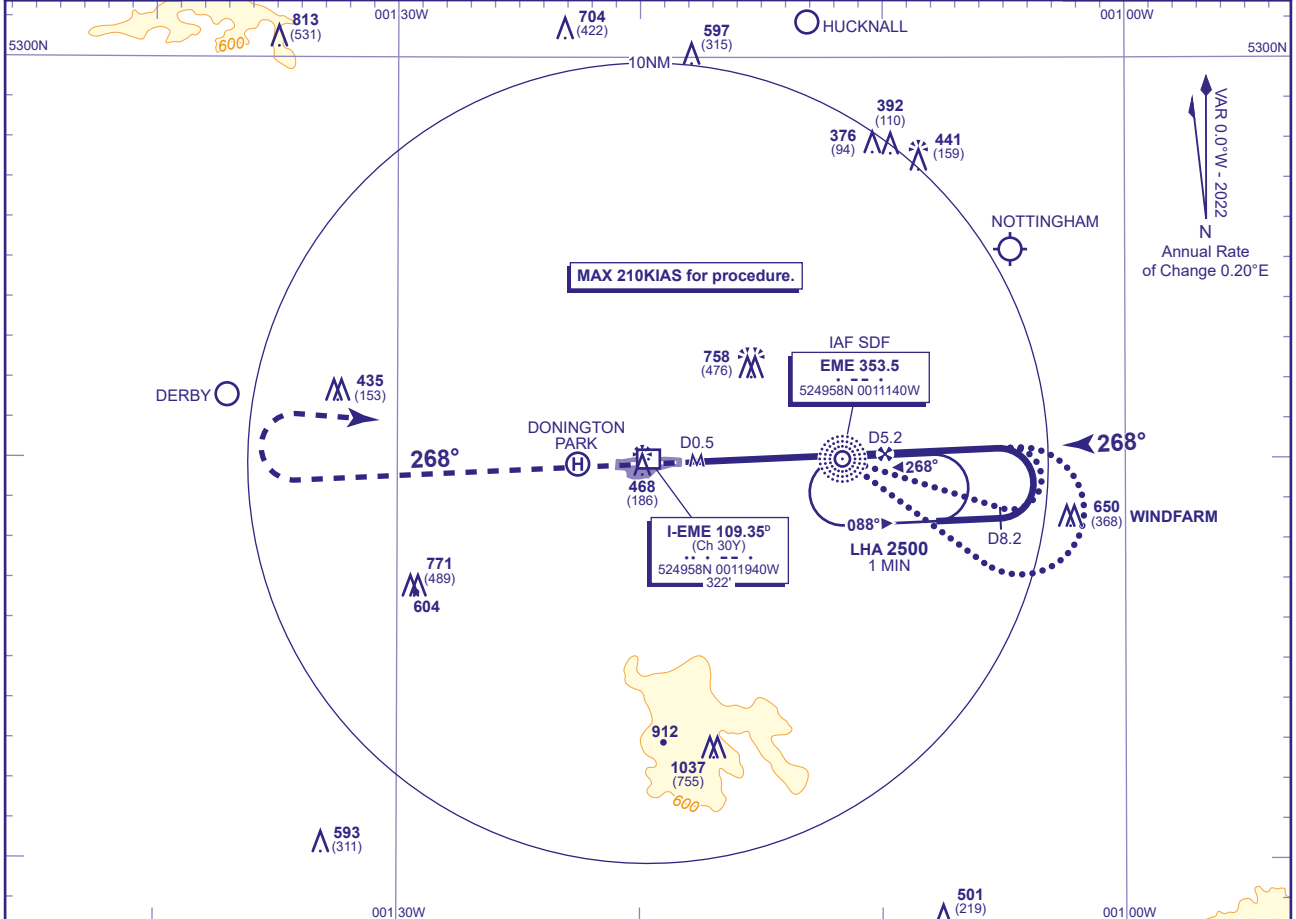
# INSTRUMENT DEPARTURE CHART - ICAO

**EAST MIDLANDS**  
**NDB(L)/DME**  
**RWY 27**  
 (ACFT CAT A,B,C,D)



RAD	126.180, 134.180	EAST MIDLANDS RADAR	AD ELEVATION	306
	120.130	EAST MIDLANDS DIRECTOR	THR ELEVATION	282
TWR	124.005	EAST MIDLANDS TOWER	OBSTACLE ELEVATION	1038 AMSL (756) (ABOVE THR)
	121.905	EAST MIDLANDS GROUND		
ATIS	122.680	EAST MIDLANDS INFORMATION	BEARINGS ARE MAGNETIC	

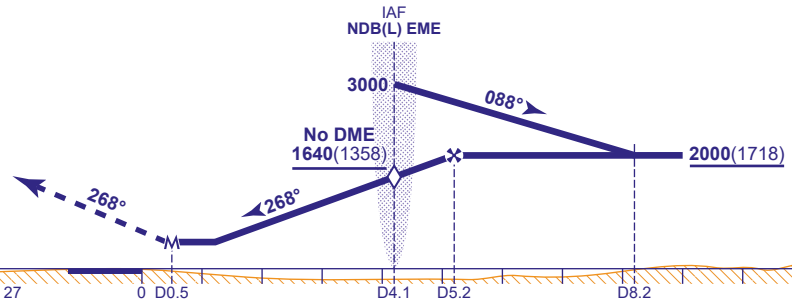
TRANSITION ALTITUDE  
**6000**



**RECOMMENDED PROFILE** Gradient 5.2%, 320FT/NM

<b>DME I-EME</b>	5	4	3	2	1
<b>ALT(HGT)</b>	1930(1648)	1610(1328)	1290(1008)	970(688)	650(368)

**MAPt I-EME DME 0.5**  
 (3.6NM after NDB(L) EME)  
 Climb straight ahead to **3000**, or I-EME D8.8 whichever is earlier then turn right to **NDB(L) EME** at **3000** or as directed.



Aircraft Category		A	B	C	D	Rate of descent	G/S KT	160	140	120	100	80
OCA (OCH)	WITH DME	630(348)	630(348)	630(348)	630(348)		NDB(L) EME to MAPt	FT/MIN	850	740	640	530
	NO DME	720(438)	720(438)	720(438)	720(438)	MIN:SEC		1:21	1:32	1:48	2:09	2:42
VM(C)OCA (OCH AAL)	Total Area	800(494)	800(494)	1200(894)	1200(894)							

**ALTERNATIVE PROCEDURE**  
 From overhead NDB(L) EME **not below 3000**(2718) fly outbound on NDB(L) EME QDR 108° (CAT A,B); NDB(L) EME QDR 127° (CAT C,D), descending to **not below 2000**(1718). At I-EME DME 8.2 baseturn left to establish on the FAT. Once established continue as for main procedure.

**AIRCRAFT UNABLE TO RECEIVE DME I-EME NOTIFY ATC**  
 PRIMARY PROCEDURE: Fly outbound leg of racetrack for 1MIN 30SEC (CAT A,B), 1MIN (CAT C,D).  
 ALTERNATIVE PROCEDURE: Fly outbound leg of baseturn for 1MIN 45SEC (CAT A,B), 1MIN 15SEC (CAT C,D).  
 Once established on the FAT descend to cross SDF overhead NDB(L) EME **not below 1640**(1358) and then to MDA(H).

**NOTE 1** Lowest altitude to commence procedure from hold is **3000**.  
**2** Aircraft will normally be required to hold not lower than **3000**.

**CHANGE (3/21):** OCA(OCH) WITH DME MINIMA REVISED.