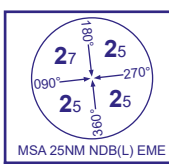
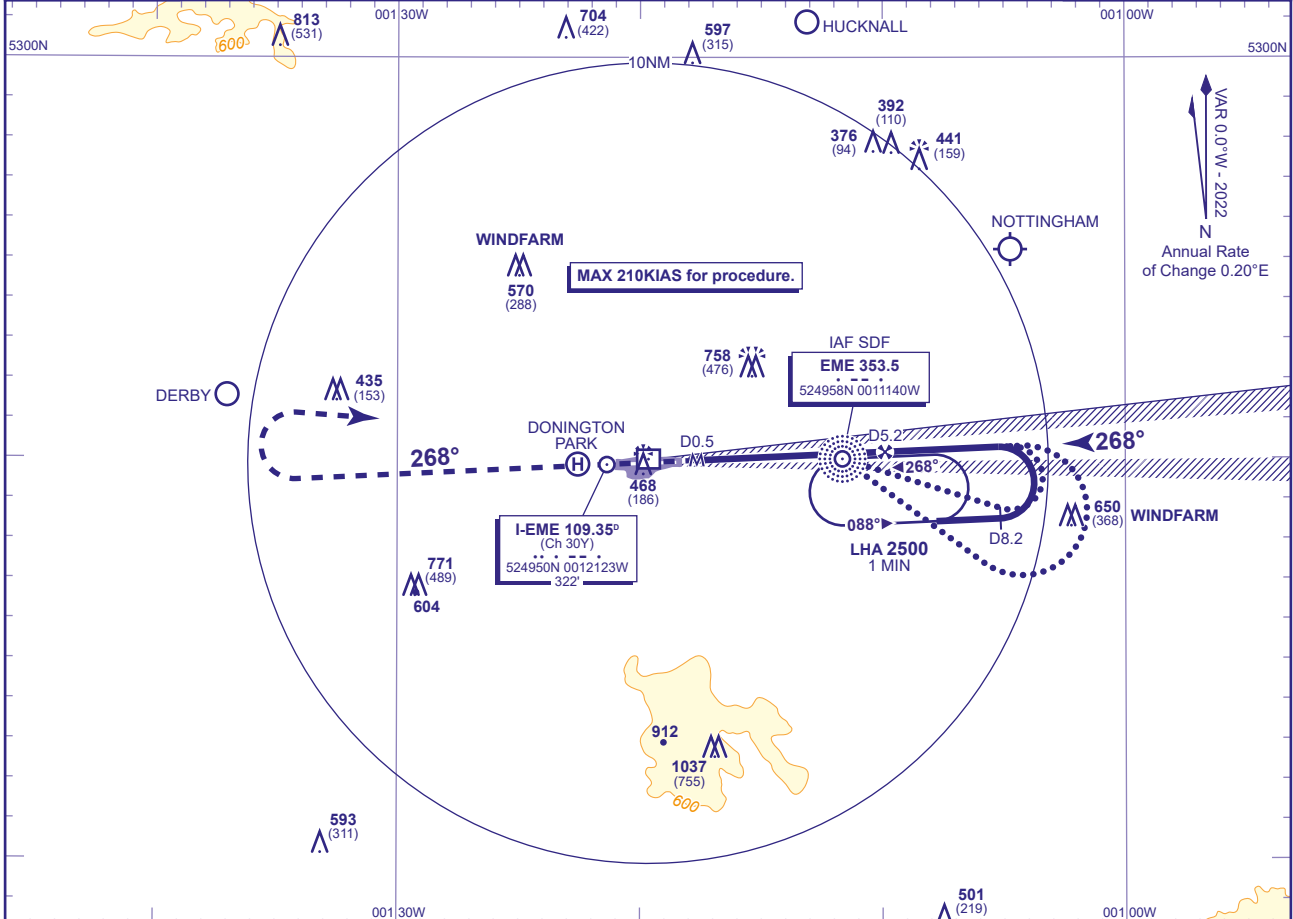


# INSTRUMENT DEPARTURE CHART - ICAO

**EAST MIDLANDS  
LOC/DME/NDB(L)  
RWY 27  
(ACFT CAT A,B,C,D)**



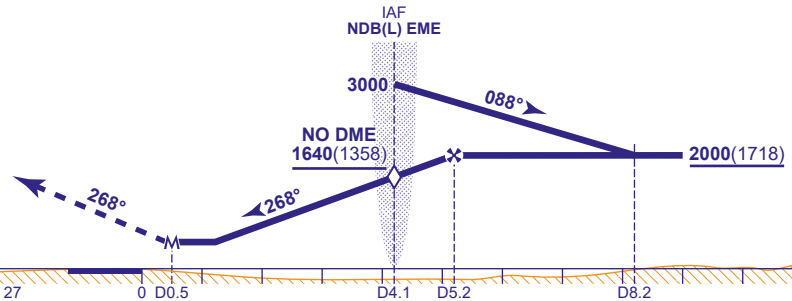
RAD	126.180, 134.180	EAST MIDLANDS RADAR	AD ELEVATION	306	
	120.130	EAST MIDLANDS DIRECTOR	THR ELEVATION	282	
TWR	124.005	EAST MIDLANDS TOWER	OBSTACLE ELEVATION	1037 AMSL (755) (ABOVE THR)	
	121.905	EAST MIDLANDS GROUND			
ATIS	122.680	EAST MIDLANDS INFORMATION	BEARINGS ARE MAGNETIC		
				TRANSITION ALTITUDE	6000



**RECOMMENDED PROFILE** Gradient 5.2%, 320FT/NM

<b>DME I-EME</b>	5	4	3	2	1
<b>ALT(HGT)</b>	1930(1648)	1610(1328)	1290(1008)	970(688)	650(368)

**MAPt I-EME DME 0.5**  
(3.6NM after NDB(L) EME)  
Climb straight ahead to 3000, or I-EME D8.8 whichever is earlier then turn right to NDB(L) EME at 3000 or as directed.



<b>Aircraft Category</b>						<b>Rate of descent</b>	<b>G/S KT</b>	160	140	120	100	80
<b>OCA (OCH)</b>	<b>WITH DME</b>	610(328)	610(328)	610(328)	610(328)			<b>FT/MIN</b>	850	740	640	530
	<b>NO DME</b>	690(408)	690(408)	690(408)	690(408)	<b>NDB(L) EME to MAPt</b>	<b>MIN:SEC</b>	1:21	1:32	1:48	2:09	2:42
<b>VM(C)OCA (OCH AAL)</b>	<b>Total Area</b>	800(494)	800(494)	1200(894)	1200(894)							

**ALTERNATIVE PROCEDURE**  
From overhead NDB(L) EME **not below 3000**(2718) fly outbound on NDB(L) EME QDR 108° (CAT A,B); NDB(L) EME QDR 127° (CAT C,D), descending to **not below 2000**(1718). At I-EME DME 8.2 baseturn left to intercept LOC. Once established on the LOC continue as for main procedure.

**AIRCRAFT UNABLE TO RECEIVE DME I-EME NOTIFY ATC**  
PRIMARY PROCEDURE: Fly outbound leg of racetrack for 1MIN 30SEC (CAT A,B), 1MIN (CAT C,D).  
ALTERNATIVE PROCEDURE: Fly outbound leg of baseturn for 1MIN 45SEC (CAT A,B), 1MIN 15SEC (CAT C,D).  
Once established on the LOC descend to cross SDF overhead NDB(L) EME **not below 1640**(1358) and then to MDA(H).

**NOTE 1** Lowest altitude to commence procedure from hold is 3000.  
**2** Aircraft will normally be required to hold not lower than 3000.

**CHANGE (1/21):** MAG VAR. MAG TRACKS.