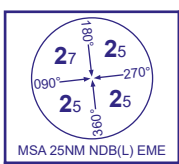
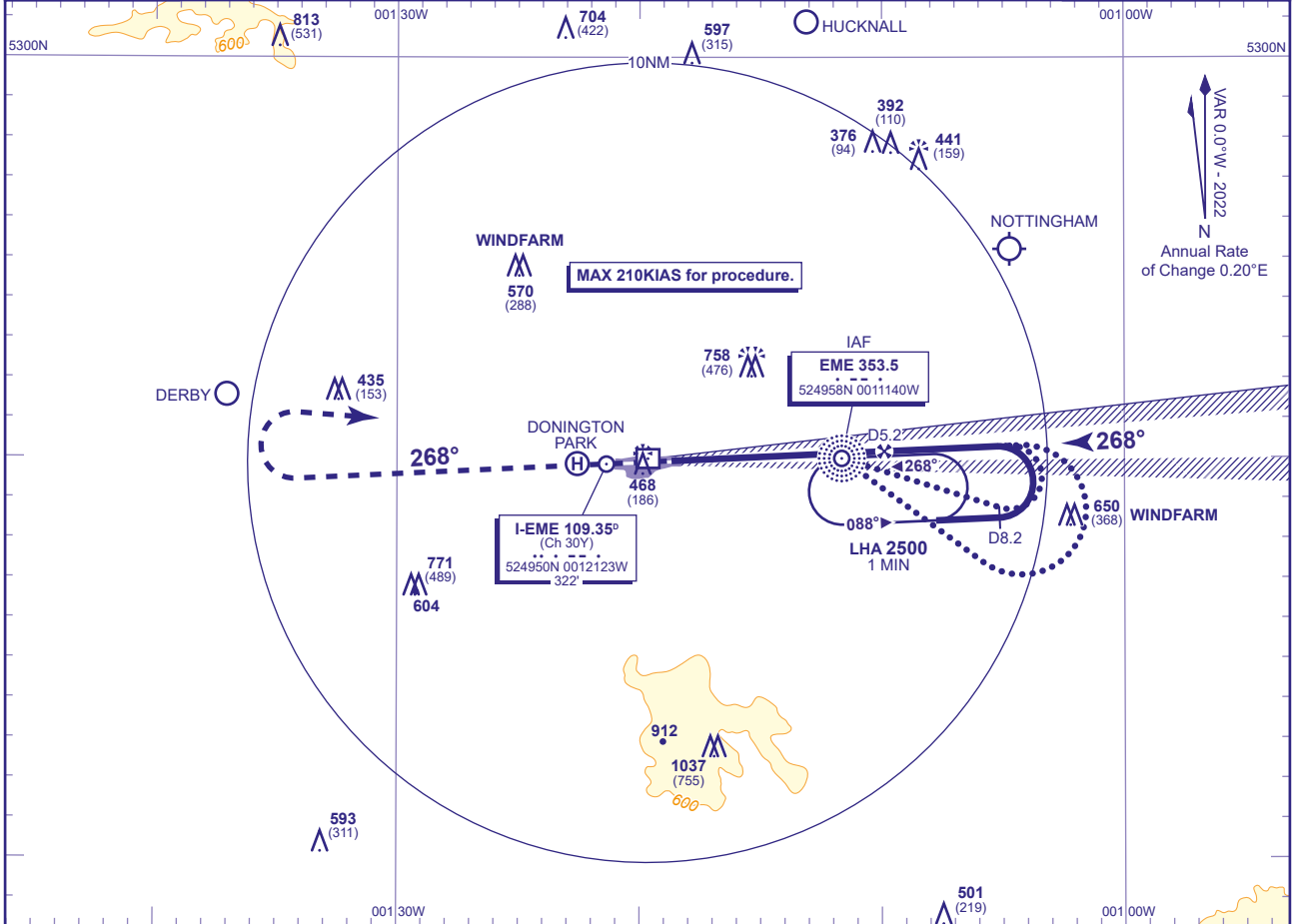


# INSTRUMENT CHART - ICAO

# EAST MIDLANDS ILS/DME/NDB(L) RWY 27 (ACFT CAT A,B,C,D)



RAD	126.180, 134.180	EAST MIDLANDS RADAR	AD ELEVATION	306	
	120.130	EAST MIDLANDS DIRECTOR	THR ELEVATION	282	
TWR	124.005	EAST MIDLANDS TOWER	OBSTACLE ELEVATION	1037 AMSL (755) (ABOVE THR)	
	121.905	EAST MIDLANDS GROUND			
ATIS	122.680	EAST MIDLANDS INFORMATION	BEARINGS ARE MAGNETIC		
				TRANSITION ALTITUDE	6000

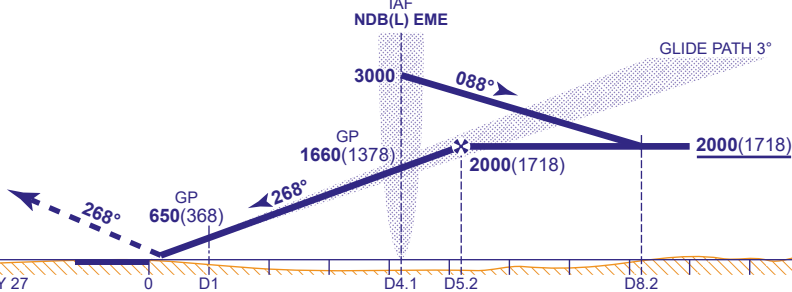


### RECOMMENDED PROFILE GLIDE PATH 3°, 320FT/NM

DME I-EME	5	4	3	2	1
ALT(HGT)	1930(1648)	1610(1328)	1290(1008)	970(688)	650(368)

**RDH 54**

Climb straight ahead to **3000**, or **I-EME D8.8** whichever is earlier then turn right to **NDB(L) EME** at **3000** or as directed.



Aircraft Category		A	B	C	D	Rate of descent	G/S KT	160	140	120	100	80
OCA (OCH)	CAT I	422(140)	432(150)	445(163)	459(177)			FT/MIN	850	740	640	530
	CAT II	331(49)	341(59)	354(72)	367(85)							
VM(C)OCA (OCH AAL)	Total Area	800(494)	800(494)	1200(894)	1200(894)							

**ALTERNATIVE PROCEDURE**  
From overhead NDB(L) EME **not below 3000**(2718) fly outbound on NDB(L) EME QDR 108° (CAT A,B); NDB(L) EME QDR 127° (CAT C,D), descending to **not below 2000**(1718). At I-EME DME 8.2 baseturn left to intercept LOC. Once established on the LOC descend on the GP from the FAP (nominal I-EME D5.2) to DH.

**AIRCRAFT UNABLE TO RECEIVE DME I-EME NOTIFY ATC**  
PRIMARY PROCEDURE: Fly outbound leg of racetrack for 1MIN 30SEC (CAT A,B), 1MIN (CAT C,D).  
ALTERNATIVE PROCEDURE: Fly outbound leg of baseturn for 1MIN 45SEC (CAT A,B), 1MIN 15SEC (CAT C,D).

**NOTE 1** Lowest altitude to commence procedure from hold is **3000**.  
**2** Aircraft will normally be required to hold not lower than **3000**.

**CHANGE (1/21):** MAG VAR. MAG TRACKS.