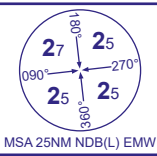


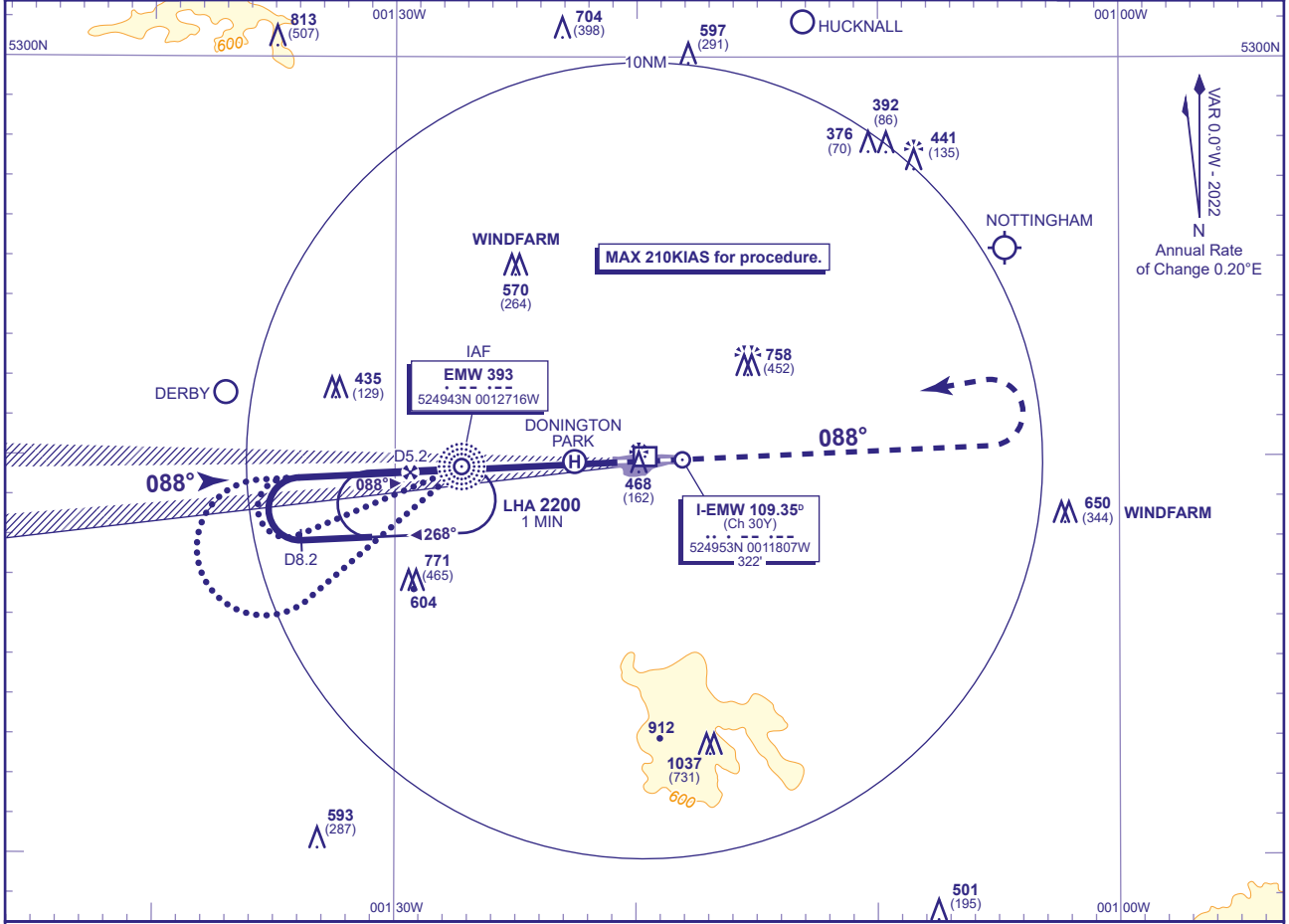
INSTRUMENT APPROACH CHART - ICAO

EAST MIDLANDS
ILS/DME/NDB(L)
RWY 09
 (ACFT CAT A,B,C,D)



| | | | | |
|------|------------------|---------------------------|-----------------------|-----------------------------|
| RAD | 126.180, 134.180 | EAST MIDLANDS RADAR | AD ELEVATION | 306 |
| | 120.130 | EAST MIDLANDS DIRECTOR | THR ELEVATION | 306 |
| TWR | 124.005 | EAST MIDLANDS TOWER | OBSTACLE ELEVATION | 1037 AMSL (731) (ABOVE THR) |
| | 121.905 | EAST MIDLANDS GROUND | | |
| ATIS | 122.680 | EAST MIDLANDS INFORMATION | BEARINGS ARE MAGNETIC | |

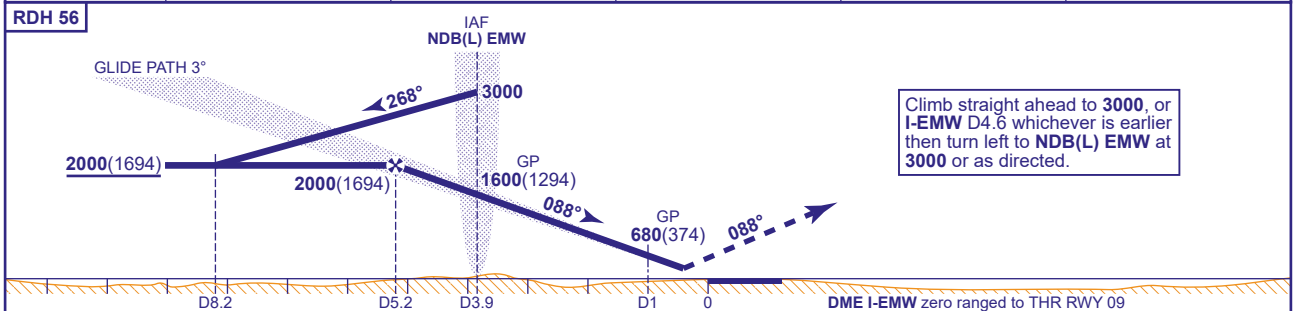
TRANSITION ALTITUDE
6000



VAR 0.0°W - 2022
 Annual Rate of Change 0.20°E

RECOMMENDED PROFILE GLIDE PATH 3°, 320FT/NM

| | | | | | |
|------------------|------------|------------|------------|-----------|----------|
| DME I-EMW | 5 | 4 | 3 | 2 | 1 |
| ALT(HGT) | 1960(1654) | 1640(1334) | 1320(1014) | 1000(694) | 680(374) |



Climb straight ahead to **3000**, or **I-EMW D4.6** whichever is earlier then turn left to **NDB(L) EMW** at **3000** or as directed.

| Aircraft Category | | A | B | C | D | Rate of descent | G/S KT | 160 | 140 | 120 | 100 | 80 |
|---------------------------|-------------------|----------|----------|-----------|-----------|-----------------|--------|--------|-----|-----|-----|-----|
| OCA (OCH) | CAT I | 446(140) | 457(151) | 468(162) | 483(177) | | | FT/MIN | 850 | 740 | 640 | 530 |
| VM(C)OCA (OCH AAL) | Total Area | 800(494) | 800(494) | 1200(894) | 1200(894) | | | | | | | |

ALTERNATIVE PROCEDURE
 From overhead NDB(L) EMW **not below 3000(2694)** fly outbound on NDB(L) EMW QDR 248° (CAT A,B); NDB(L) EMW QDR 230° (CAT C,D), descending to **not below 2000(1694)**. At I-EMW DME 8.2 baseturn right to intercept LOC. Once established on the LOC descend on the GP from the FAP (nominal I-EMW D5.2) to DH.

AIRCRAFT UNABLE TO RECEIVE DME I-EMW
 PRIMARY PROCEDURE: Notify ATC. Fly outbound leg of racetrack for 1MIN 30SEC (CAT A,B), 1MIN (CAT C,D), then turn right to establish on the LOC. MAX 210KIAS.
 ALTERNATIVE PROCEDURE: Notify ATC. Fly outbound leg of baseturn for 1MIN 45SEC (CAT A,B), 1MIN 15SEC (CAT C,D), then turn right to establish on the LOC. MAX 210KIAS.

NOTE 1 Lowest altitude to commence procedure from hold is **3000**.
2 Aircraft will normally be required to hold not lower than **3000**.

CHANGE (1/21): MAG VAR. MAG TRACKS.