

**BRIEFING SHEET  
UNITED KINGDOM  
047/2025**

Alan H Frew	Date of Publication	22 JUL 2025
Airspace Regulation (Off Route Airspace) SARG	<b>Notes</b> (a) All times are UTC. (b) References are to the UK AIP. (c) Information, where applicable, should also be used to amend appropriate charts.	
Civil Aviation Authority		
Aviation House, Beehive Ringroad, Crawley, West Sussex		
RH6 0YR		
alan.frew@caa.co.uk		

**RESTRICTION OF FLYING REGULATIONS: PRESIDENT OF THE UNITED STATES VISIT  
SCOTLAND  
24 JULY 2025 – 29 JULY 2025**

- The President of the United States (POTUS) will visit Scotland between the 25 July 2025 and 29 July 2025, POTUS will visit several locations throughout Scotland and as part of the security arrangements the Secretary of State for Transport has decided that it is necessary, on the grounds of public safety and security, to introduce Restriction of Flying Regulations under Article 239 of the Air Navigation Order 2016 to restrict the operation of all types of aircraft **between 24 July 2025 and 29 July 2025**.
- The charts in this document relate to the areas defined in the associated text; all areas will be subject to NOTAM action; these are to be read in conjunction with this document. Pilots are strongly encouraged to employ the use of moving map technology and/or an air traffic service to mitigate the risk of inadvertent airspace infringements.
- The times mentioned in this Notice are Universal Co-ordinated Time (UTC), which is one hour behind British Summer Time (BST).

**4. 25 July 2025 and 28 July 2025  
AREA A – GLASGOW PRESTWICK**

Subject to paragraphs (10) and (13) **between 1820 and 1905 hours on 25 July 2025 and 1430 and 1515 hours on 28 July 2025** no aircraft is to fly below 5500 FT AMSL within the area bounded by the following points:

<b>AREA A</b>		
<b>SFC to 5500 FT AMSL</b>		
A	554023N 0045040W	then straight line to
B	552521N 0040716W	thence clockwise arc of a circle having a radius 17nm whose centre is at
C	553034N 0043540W	to
D	551710N 0041723W	then straight line to
E	553124N 0045830W	thence clockwise arc of a circle having a radius 13nm whose centre is at
F	553034N 0043540W	to
G	554023N 0045040W	-

**5. 25 July 2025 and 28 July 2025  
AREA B – GLASGOW PRESTWICK - TURNBERRY**

Subject to paragraphs (10) and (13) **between 1830 and 1950 hours on 25 July 2025 and 1345 and 1505 hours on 28 July 2025** no aircraft is to fly below 5500 FT AMSL within the area bounded by the following points:

AREA B		
SFC to 5500 FT AMSL		
A	553034N 0043925W;	thence clockwise arc of a circle having a radius 2nm whose centre is at
B	553034N 0043540W	to
C	553009N 0043226W	then straight line to
D	552154N 0043518W	then straight line to
E	551706N 0044802W	thence clockwise arc of a circle having a radius 2nm whose centre is at
F	551851N 0044958W	to
G	552033N 0045130W	then straight line to
H	552423N 0044100W	then straight line to
I	553034N 0043925W	-

6. **24 July 2025 until 28 July 2025**  
**AREA C - TURNBERRY**

Subject to paragraphs (10) and (13) **between 0700 hours on 24 July 2025 and 1430 hours on 28 July 2025** no aircraft is to fly below 5500 FT AMSL within the area of a circle radius 5nm whose centre is at 551851N 0044958W.

7. **28 July 2025 and 29 July 2025**  
**AREA D – RAF LOSSIEMOUTH**

Subject to paragraphs (11) and (13) **between 1520 and 1605 hours on 28 July 2025 and 1415 and 1510 hours on 29 July 2025** no aircraft is to fly below 4500 FT AMSL within the area of a circle radius 10nm whose centre is at 574218N 0032021W.6

8. **28 July 2025 and 29 July 2025**  
**AREA E – RAF LOSSIEMOUTH – MENIE ESTATE ABERDEEN**

Subject to paragraphs (11) and (13) **between 1530 and 1645 hours on 28 July 2025 and 1345 and 1500 hours on 29 July 2025** no aircraft is to fly below 4500 FT AMSL within the area bounded by the following points:

AREA E		
SFC to 4500 FT AMSL		
A	574623N 0031457W	then straight line to
B	573641N 0021217W	then straight line to
C	571808N 0015324W	thence clockwise arc of a circle having a radius 5nm whose centre is at
D	571640N 0020210W	to
E	571501N 0021046W	then straight line to
F	573023N 0022828W	then straight line to
G	573823N 0032621W	thence clockwise arc of a circle having a radius 5nm whose centre is at

H	574218N 0032021W	to
I	574623N 0031457W	-

9. **27 July 2025 until 29 July 2025**  
**AREA F – MENIE ESTATE ABERDEEN**

Subject to paragraphs (12) and (13) **between 0700 hours on 27 July 2025 and 1430 hours on 29 July 2025** no aircraft is to fly below 4500 FT AMSL within the area of a circle radius 5nm whose centre is at 571640N 0020210W.

10. Paragraphs (4) to (6) do not apply to any aircraft:

- a. making an approach to or departure from Glasgow Prestwick Airport which has been authorised by the Police Scotland Aviation Safety and Security Unit and whilst under the direction of:
  - i. Prestwick Area Control Centre, or
  - ii. the Air Traffic Control unit at Glasgow Prestwick Airport.

11. Paragraphs (7) and (8) do not apply to any aircraft making an approach to or departure from RAF Lossiemouth which has been authorised by the Police Scotland Aviation Safety and Security Unit and under the direction of the Air Traffic Control unit at RAF Lossiemouth.

12. Paragraphs (8) and (9) do not apply to any aircraft making an approach to or departure from Aberdeen International Airport which has been authorised by the Police Scotland Aviation Safety and Security Unit and under the direction of the Air Traffic Control unit at Aberdeen International Airport.

13. Paragraphs (4) to (9) do not apply to any aircraft:

- a. operated by or on behalf of:
  - i. The President of the United States,
  - ii. a Police Air Support Unit,
  - iii. an Emergency Medical Service, in response to an emergency situation,
  - iv. the Maritime and Coastguard Agency, in response to an emergency situation,
- b. operating in accordance with a permission issued by the Police Scotland Aviation Safety and Security Unit who may be contacted via email: [osdaviationevents@scotland.police.uk](mailto:osdaviationevents@scotland.police.uk) or for **URGENT MATTERS ONLY** 07765-749919.

14. In relation to this document, the term 'aircraft' includes any small balloon, any kite, any unmanned aircraft and any parachute including a parascending parachute or paramotor.

15. Details of Restricted Airspace feature in the daily AIS Information Line message 08085-354802 and 01489-887515 and will be included on the Preflight Information Bulletins (PIB) through the AIS Website at <http://nats.aero/ais>.

16. Further enquiries can be made to Mr Alan Frew, Airspace Regulator, Safety and Airspace Regulation Group, Civil Aviation Authority, via [Alan.frew@caa.co.uk](mailto:Alan.frew@caa.co.uk)

# RESTRICTED AREA (TEMPORARY)

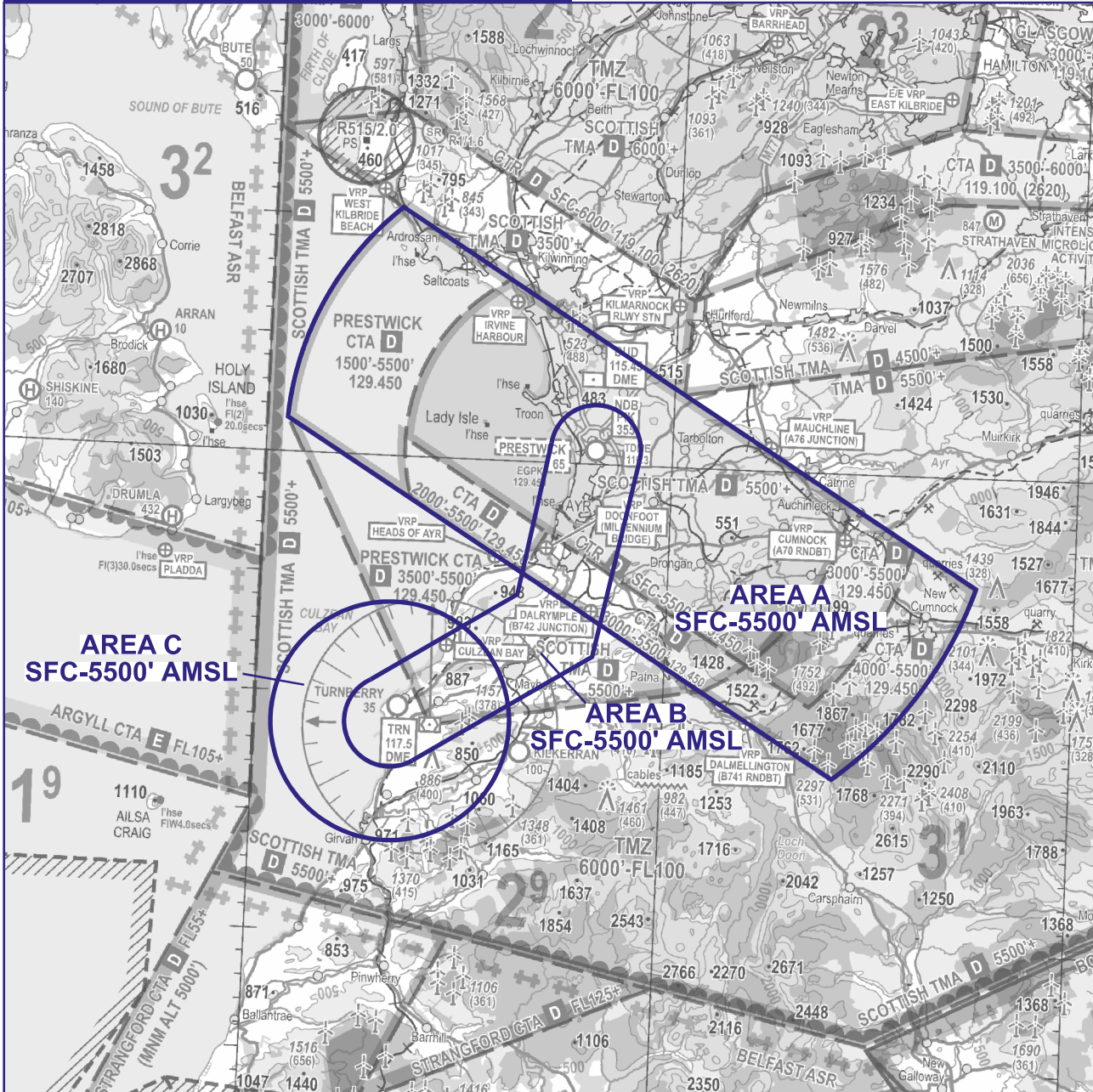
## CHART ONE AREAS A, B & C

10 0 10NM

NOTE: Aeronautical/topographical background detail shown from CAA VFR chart.  
See NATS AIS website for latest VFR amendments.

NOT FOR OPERATIONAL USE - PLANNING PURPOSES ONLY

**SEE FULL DOCUMENT FOR DETAILS,  
DATES & ACTIVE TIMES**





RESTRICTED AREA (TEMPORARY)

# CHART TWO AREAS D, E & F

15

0

15NM

NOTE: Aeronautical/topographical background detail shown from CAA VFR chart.

See NATS AIS website for latest VFR amendments.

NOT FOR OPERATIONAL USE - PLANNING PURPOSES ONLY

SEE FULL DOCUMENT FOR DETAILS,  
DATES & ACTIVE TIMES

**AREA D**  
**SFC-4500' AMSL**

**AREA E**  
**SFC-4500' AMSL**

**AREA F**  
**SFC-4500' AMSL**

