

AIP SUPPLEMENT 048/2024

UNITED KINGDOM



UK Aeronautical Information Services
NATS Swanwick
Sopwith Way
Southampton SO31 7AY
aissupervisor@nats.co.uk
<http://www.nats.aero/ais>
james.granger@nats.co.uk (Content - EGLF AD)

Date Of Publication

30 May 2024

Notes

- (a) All times are UTC.
- (b) References are to the UK AIP.
- (c) Information, where applicable, should also be used to amend appropriate charts.



FARNBOROUGH (EGLF) INTERNATIONAL (FI) AIRSHOW 2024 FLYING DISPLAY - TEMPORARY HOLDING PATTERNS

1 General

- 1.1 In order to provide an acceptable holding area for aircraft practising/validating or carrying out display activities during the Farnborough International AirShow 2024, a temporary holding pattern has been created. The hold is only partially contained within controlled airspace with the majority outside controlled airspace.
- 1.2 The RA(T) is advised under separate AIC M 066/2024 and relevant NOTAM.
- 1.3 The provision of the hold is to cover for poor weather conditions at the preferred location.
- 1.4 Pilots are advised that they should expect a wide range of aircraft types to be established in the holding patterns during hours of operation, including military fast jets and large commercial airliners.
- 1.5 These holds are specific to the AirShow and will not be used for holding normal Farnborough inbound traffic.
- 1.6 Due to the diverse handling characteristics of those types in the holds, the patterns may be outside the expected areas, and pilots transiting in the vicinity are to exercise a good look out at all times.
- 1.7 In order to contain the geographical area utilised, all holding aircraft will be doing so with a holding speed of 180 KT (provided aircraft type allows).
- 1.8 Aircraft in the hold will be in receipt of Traffic service from Farnborough.

2 Holding Pattern Location

2.1 Primary Hold

Holding fix established at CPT Radial 150 degrees at 28 DME. Hold axis inbound on 330 degrees, with a left-hand pattern. Holding speed 180 KT, at 3000 FT AMSL based on Farnborough QNH.

Note: Hold entries are not omnidirectional and are limited to entries along the radial or its reciprocal.

As this hold is partially contained within Farnborough CTA 5, the ATC service provided by Farnborough Air Traffic Control will vary between a Radar Control Service (within CTA 5) and a UK FIS service (minimum Traffic service), however, to reduce ATC workload, no change of service will be communicated as aircraft enter and leave CAS.

The holding fix is overhead D130, and the pattern is expected to be encompassed between the towns of Alton, Haslemere, Midhurst and Petersfield.

Note: Hold entries are not omnidirectional and are limited to entries along the radial or its reciprocal.

3 Times of Operation

- 3.1 Both holding patterns may be used **between 0700 hours and 1900 hours from 15 July to 26 July 2024.**

4 Traffic Information

- 4.1 Information on activity can be obtained from Farnborough LARS West on VHF frequency 125.250 MHz.

5 Charts

- 5.1 Primary Hold

TEMPORARY HOLDING PATTERN

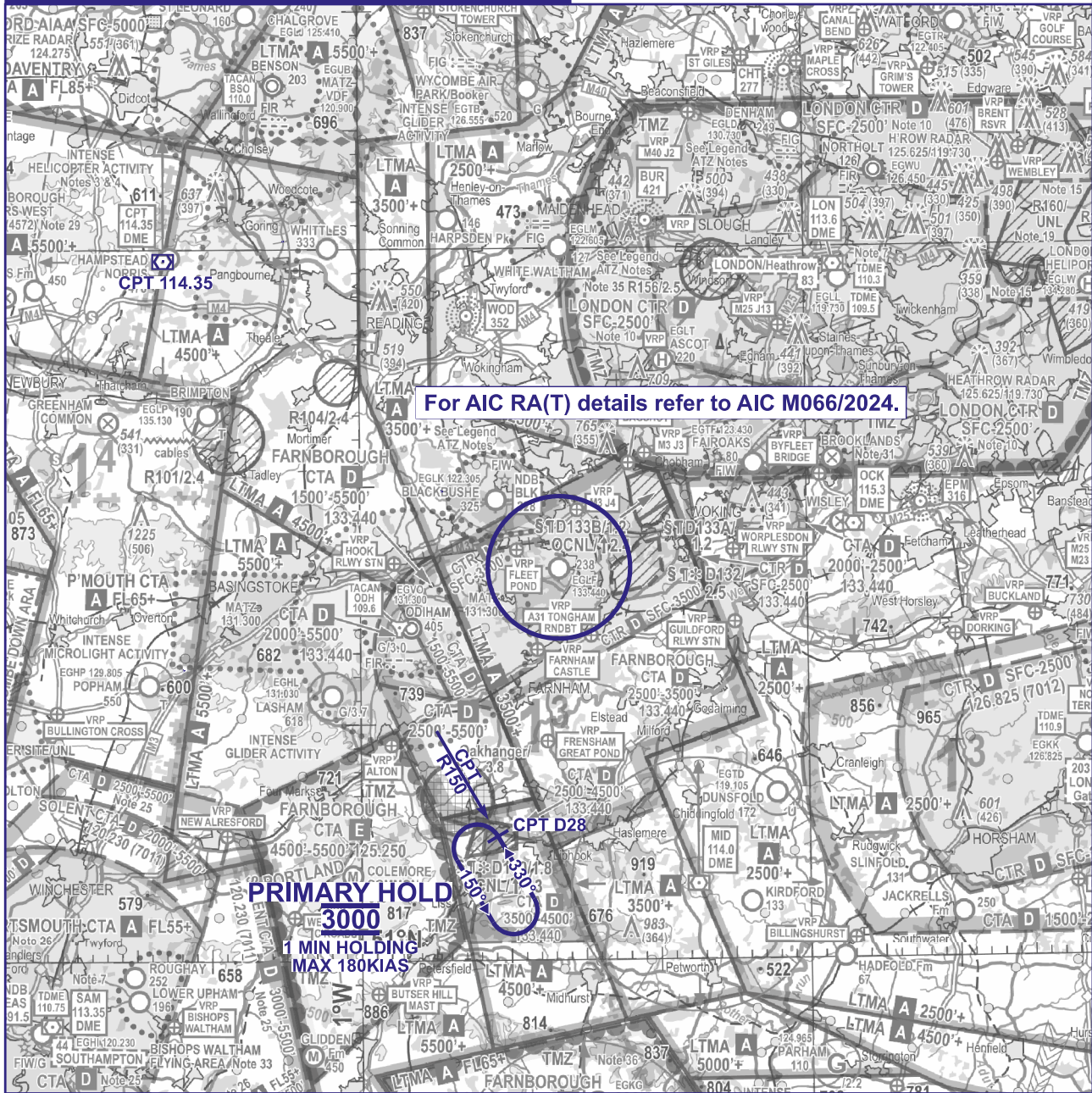
FARNBOROUGH INTERNATIONAL AIRSHOW

10 0 10NM

NOTE: Aeronautical/topographical background detail shown from CAA VFR chart.
See NATS AIS website for latest VFR amendments.

NOT FOR OPERATIONAL USE - PLANNING PURPOSES ONLY

SEE FULL DOCUMENT FOR DETAILS,
DATES & ACTIVE TIMES



2024_052_CR08519_GRAPHIC DRAWN 15 APR 24