

# AERONAUTICAL INFORMATION CIRCULAR M 055/2024

UNITED KINGDOM



UK Aeronautical Information Services  
NATS Swanwick  
Sopwith Way  
Southampton SO31 7AY  
aissupervisor@nats.co.uk  
<http://www.nats.aero/ais>  
david.ridley@caa.co.uk (Content - CAA SARG)

**Date Of Publication**  
2 May 2024

**Subject**  
Airspace Restrictions



## RESTRICTION OF FLYING REGULATIONS: JET FORMATION DISPLAY TEAM SITES 31 MAY - 05 OCTOBER 2024

- 1 Restricted Area (Temporary) are established for selected sites in the United Kingdom to protect Jet Formation Display Teams, such as The Royal Air Force Aerobatics Team (The Red Arrows), carrying out displays and associated rehearsals **between 31 May and 05 October 2024**. The Secretary of State for Transport has decided that it is necessary to introduce Restriction of Flying Regulations under Article 239 of the Air Navigation Order 2016 as stated in The Air Navigation (Restriction of Flying) (Jet Formation Display Teams) Regulations 2024.
- 2 The Statutory Instrument (SI) has been made prohibiting access by aircraft to the airspace within which the Jet Formation Display Teams will perform. The SI contains respective details of the locations and areas of the displays that are listed in Table 1 at paragraph 10 below; any changes or additions to the programme will be notified by NOTAM.
- 3 Subject to paragraph 4, and referring to Table 1 at paragraph 10 below, no aircraft is to fly:
  - a) on the days specified in column 4 during such periods of time as are notified by NOTAM;
  - b) within the area bounded by a circle of 6 NM radius, centred on the position specified in column 2;
  - c) below the altitude (AMSL or FL) as specified in column 3.
- 4 The times mentioned in this Notice are Universal Co-ordinated Time (UTC), which is one hour behind British Summer Time (BST).
- 5 Paragraph 3 does not apply to any aircraft flying:
  - a) within controlled airspace or within an aerodrome traffic zone in respect of which there is an appropriate air traffic control unit if it flies in accordance with a clearance or permission of the unit controlling that airspace or zone; or
  - b) in accordance with a permission issued by the relevant flying display director.
- 6 The site overview chart below depicts locations listed in Table 1 (the numbered circles do not show the radius of 6 NM to scale). The numbers in the UK chart also refers also to the individual charts in this document. The individual charts do show the airspace restrictions for the Jet Formation Display Teams to scale; other restricted airspace for the events may be established and should be considered when planning flights in the vicinity.
- 7 Times for each display will be notified separately by NOTAM, feature in the daily AIS Information Line message 08085-354802 and will be included on the Pre-flight Information Bulletins (PIB) through the AIS Web site at [www.nats.aero/ais](http://www.nats.aero/ais).
- 8 The point of contact at the Civil Aviation Authority is Mr D Ridley, Airspace Regulator, Safety and Airspace Regulation Group via [david.ridley@caa.co.uk](mailto:david.ridley@caa.co.uk).
- 9 Further enquiries of The Royal Air Force Aerobatics Team (The Red Arrows) can be made to:
  - a) RAFAT Operations on telephone 01522-726707 or at [RAFAT-HQFlightPlanningGroupMail@mod.uk](mailto:RAFAT-HQFlightPlanningGroupMail@mod.uk);
  - b) Squadron Leader Graeme Muscat, RAFAT-HQ Red 10, on telephone 01522-726707 or 07791-622942 or at [RAFAT-HQAPO@mod.uk](mailto:RAFAT-HQAPO@mod.uk).

### 10 Table 1

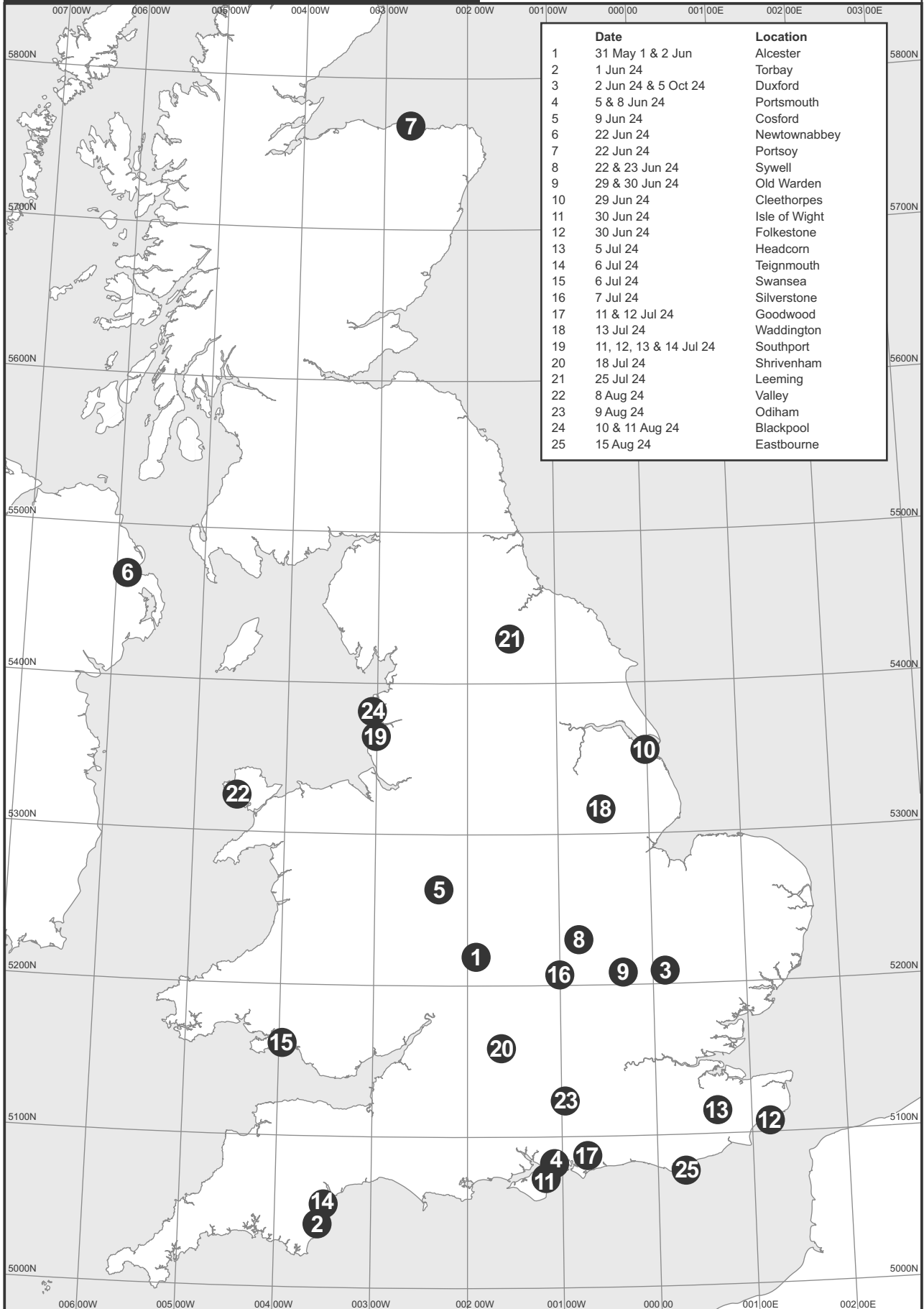
| Place      | Area (Centre of Circle) | Altitude (AMSL or FL) | Date                         |
|------------|-------------------------|-----------------------|------------------------------|
| Alcester   | 521139N 0015403W        | FL065                 | 31 May 2024, 01-02 June 2024 |
| Torbay     | 502547N 0033313W        | 8000 FT               | 01 June 2024                 |
| Duxford    | 520525N 0000752E        | 2500 FT               | 02 June 2024                 |
| Portsmouth | 504657N 0010544W        | 5500 FT               | 05 June 2024                 |
| Portsmouth | 504657N 0010544W        | 5500 FT               | 08 June 2024                 |

| Place         | Area (Centre of Circle) | Altitude (AMSL or FL) | Date              |
|---------------|-------------------------|-----------------------|-------------------|
| Cosford       | 523824N 0021816W        | 8300 FT               | 09 June 2024      |
| Newtownabbey  | 544041N 0055239W        | 8000 FT               | 22 June 2024      |
| Portsoy       | 574122N 0024129W        | 8000 FT               | 22 June 2024      |
| Sywell        | 521817N 0004727W        | FL075                 | 22-23 June 2024   |
| Old Warden    | 520505N 0001911W        | 3500 FT               | 29-30 June 2024   |
| Cleethorpes   | 533335N 0000112W        | 8000 FT               | 29 June 2024      |
| Isle of Wight | 504410N 0010914W        | FL065                 | 30 June 2024      |
| Folkestone    | 510420N 0011033E        | 8000 FT               | 30 June 2024      |
| Headcorn      | 510923N 0003831E        | 3500 FT               | 05 July 2024      |
| Teignmouth    | 503240N 0032937W        | 8000 FT               | 06 July 2024      |
| Swansea       | 513633N 0035754W        | 8000 FT               | 06 July 2024      |
| Silverstone   | 520446N 0010037W        | 8500 FT               | 07 July 2024      |
| Goodwood      | 505232N 0004405W        | 3500 FT               | 11-12 July 2024   |
| Waddington    | 531000N 0003123W        | 8000 FT               | 13 July 2024      |
| Southport     | 533904N 0030114W        | 8000 FT               | 11-14 July 2024   |
| Shrivenham    | 513557N 0013819W        | FL065                 | 18 July 2024      |
| Leeming       | 541754N 0013102W        | 8200 FT               | 25 July 2024      |
| Valley        | 531455N 0043213W        | 8000 FT               | 08 August 2024    |
| Odiham        | 511419N 0005628W        | 4000 FT               | 09 August 2024    |
| Blackpool     | 534857N 0030319W        | 8200 FT               | 10-11 August 2024 |
| Eastbourne    | 504535N 0001723E        | 5500 FT               | 15 August 2024    |
| Duxford       | 520525N 0000752E        | 2500 FT               | 05 October 2024   |

# RESTRICTION OF FLYING REGULATIONS JET FORMATION DISPLAY TEAM SITE OVERVIEW MAY/OCT 2024

50 40 30 20 10 0 50NM  
 Note: Only relevant aeronautical/topographical detail is shown.  
 NOT FOR OPERATIONAL USE - PLANNING PURPOSES ONLY

## REFER TO FULL DOCUMENT FOR RESTRICTED AREA DETAILS & ACTIVE TIMES



2024 040 CR-08430 RED ARROW EVENTS OVERVIEW GRAPHIC DRAWN 22 MAR 24

RESTRICTED AREA (TEMPORARY)

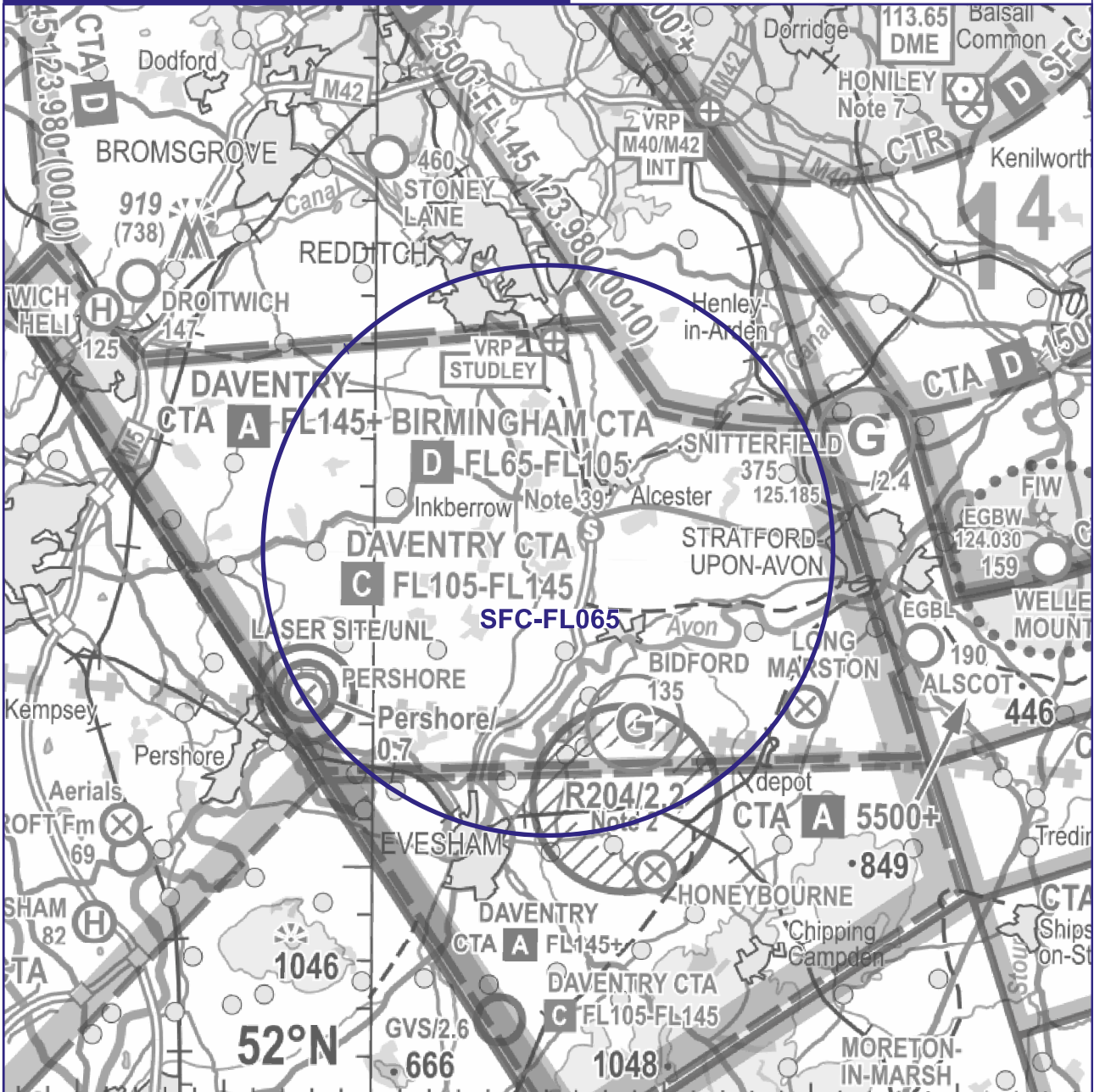
# ALCESTER

5 0 5NM

NOTE: Aeronautical/topographical background detail shown from CAA VFR chart.  
See NATS AIS website for latest VFR amendments.

NOT FOR OPERATIONAL USE - PLANNING PURPOSES ONLY

SEE FULL DOCUMENT FOR DETAILS,  
DATES & ACTIVE TIMES



2024\_040\_01\_CR08430\_GRAPHIC DRAWN 22 MAR 24

RESTRICTED AREA (TEMPORARY)

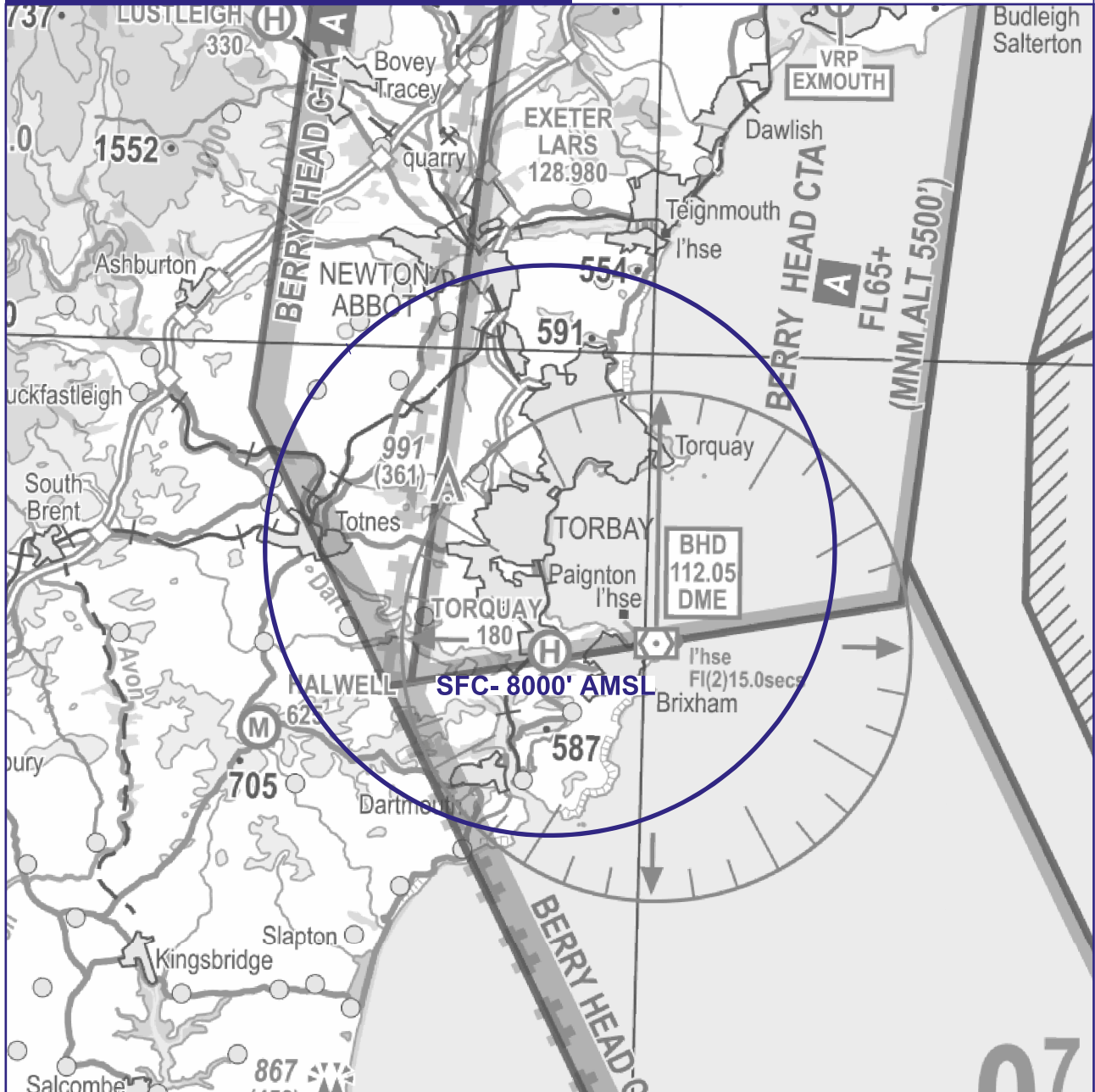
# TORBAY

5 0 5NM

NOTE: Aeronautical/topographical background detail shown from CAA VFR chart.  
See NATS AIS website for latest VFR amendments.

NOT FOR OPERATIONAL USE - PLANNING PURPOSES ONLY

SEE FULL DOCUMENT FOR DETAILS,  
DATES & ACTIVE TIMES



2024\_040\_02\_CR08430\_GRAPHIC DRAWN 22 MAR 24

**RESTRICTED AREA (TEMPORARY)**

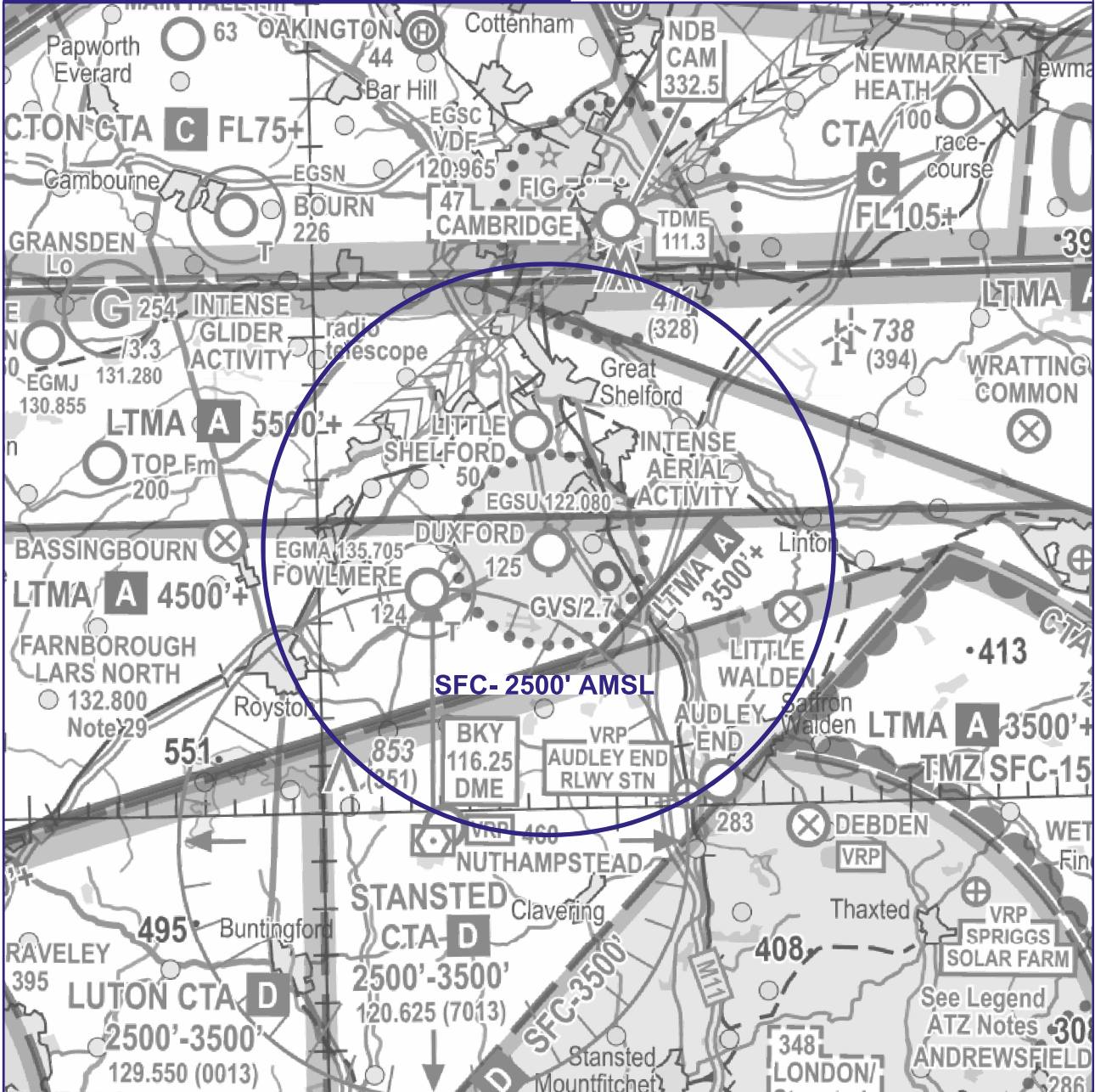
**DUXFORD**

5 0 5NM

NOTE: Aeronautical/topographical background detail shown from CAA VFR chart.  
See NATS AIS website for latest VFR amendments.

NOT FOR OPERATIONAL USE - PLANNING PURPOSES ONLY

**SEE FULL DOCUMENT FOR DETAILS,  
DATES & ACTIVE TIMES**



2024\_040\_03\_CR08430\_GRAPHIC DRAWN 22 MAR 24

RESTRICTED AREA (TEMPORARY)

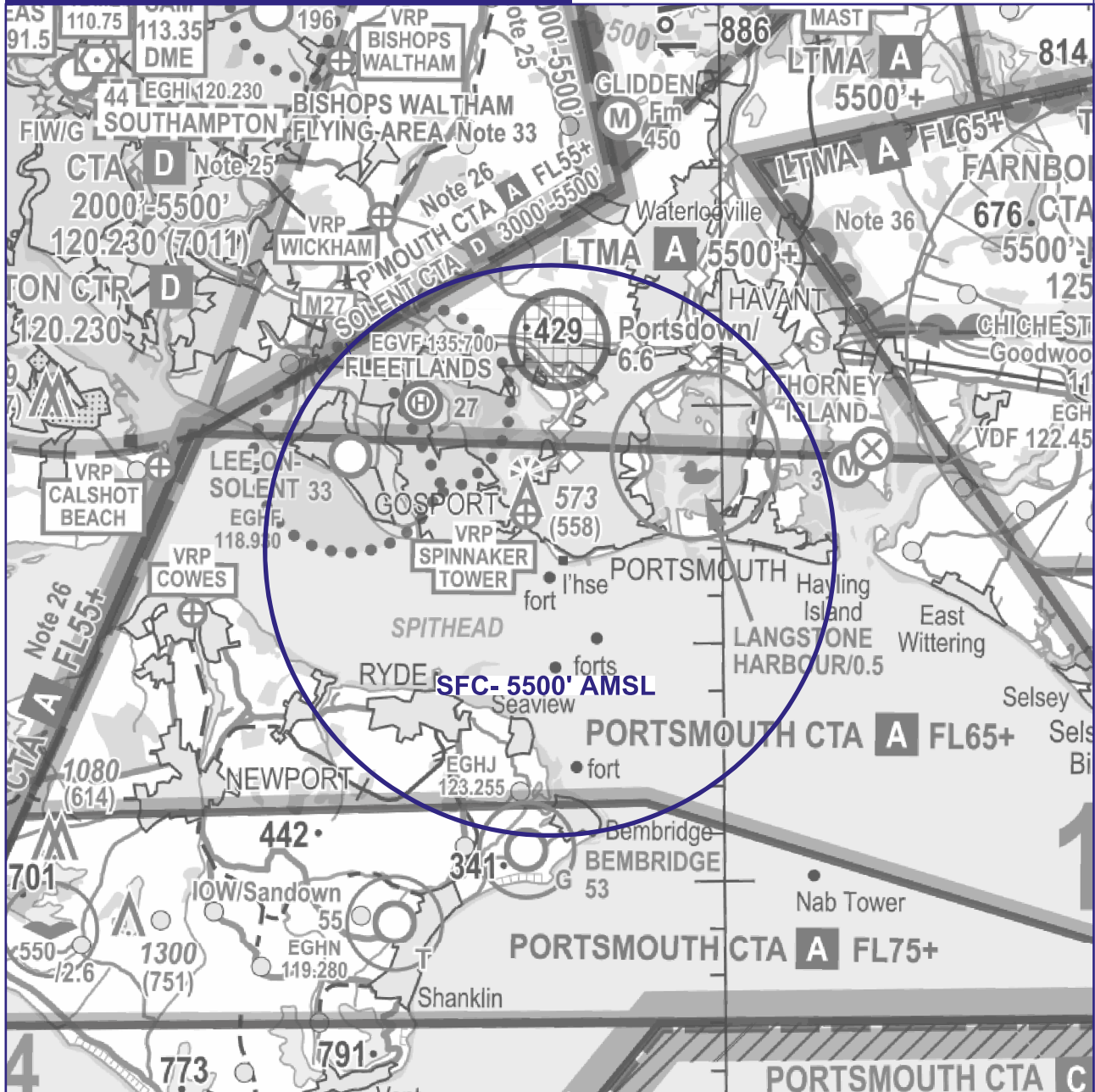
# PORTSMOUTH

5 0 5NM

NOTE: Aeronautical/topographical background detail shown from CAA VFR chart.  
See NATS AIS website for latest VFR amendments.

NOT FOR OPERATIONAL USE - PLANNING PURPOSES ONLY

SEE FULL DOCUMENT FOR DETAILS,  
DATES & ACTIVE TIMES



2024\_040\_04\_CR08430\_GRAPHIC DRAWN 22 MAR 24

RESTRICTED AREA (TEMPORARY)

# COSFORD

5 0 5NM

NOTE: Aeronautical/topographical background detail shown from CAA VFR chart.  
See NATS AIS website for latest VFR amendments.

NOT FOR OPERATIONAL USE - PLANNING PURPOSES ONLY

SEE FULL DOCUMENT FOR DETAILS,  
DATES & ACTIVE TIMES



2024\_040\_05\_CR08430\_GRAPHIC DRAWN 22 MAR 24



RESTRICTED AREA (TEMPORARY)

# NEWTOWNABBEY

5 0 5NM

NOTE: Aeronautical/topographical background detail shown from CAA VFR chart.  
See NATS AIS website for latest VFR amendments.

NOT FOR OPERATIONAL USE - PLANNING PURPOSES ONLY

SEE FULL DOCUMENT FOR DETAILS,  
DATES & ACTIVE TIMES



2024\_040\_06\_CR08430\_GRAPHIC DRAWN 22 MAR 24

RESTRICTED AREA (TEMPORARY)

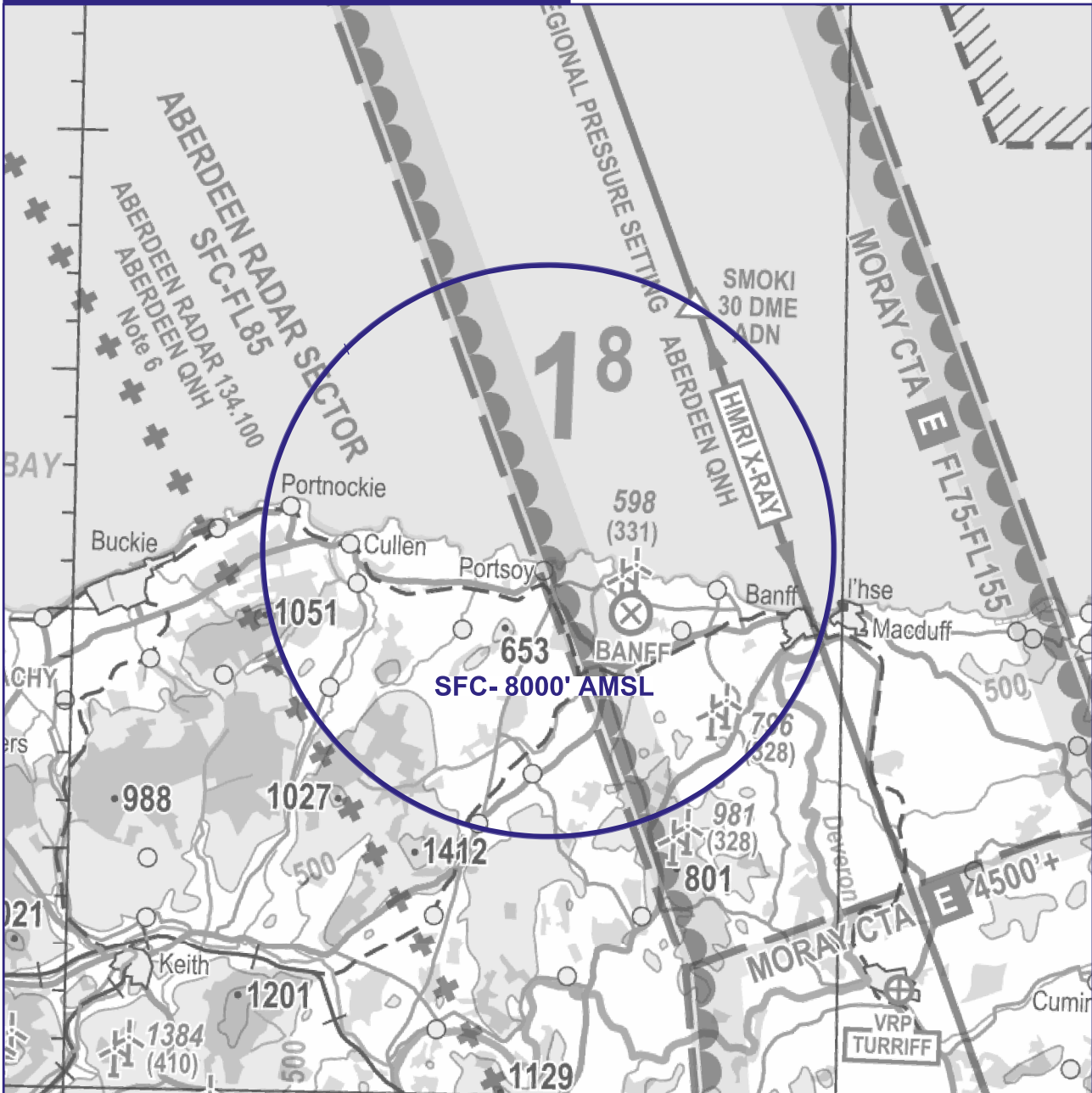
# PORTSOY

5 0 5NM

NOTE: Aeronautical/topographical background detail shown from CAA VFR chart.  
See NATS AIS website for latest VFR amendments.

NOT FOR OPERATIONAL USE - PLANNING PURPOSES ONLY

SEE FULL DOCUMENT FOR DETAILS,  
DATES & ACTIVE TIMES



2024\_040\_07\_CR08430\_GRAPHIC DRAWN 22 MAR 24

RESTRICTED AREA (TEMPORARY)

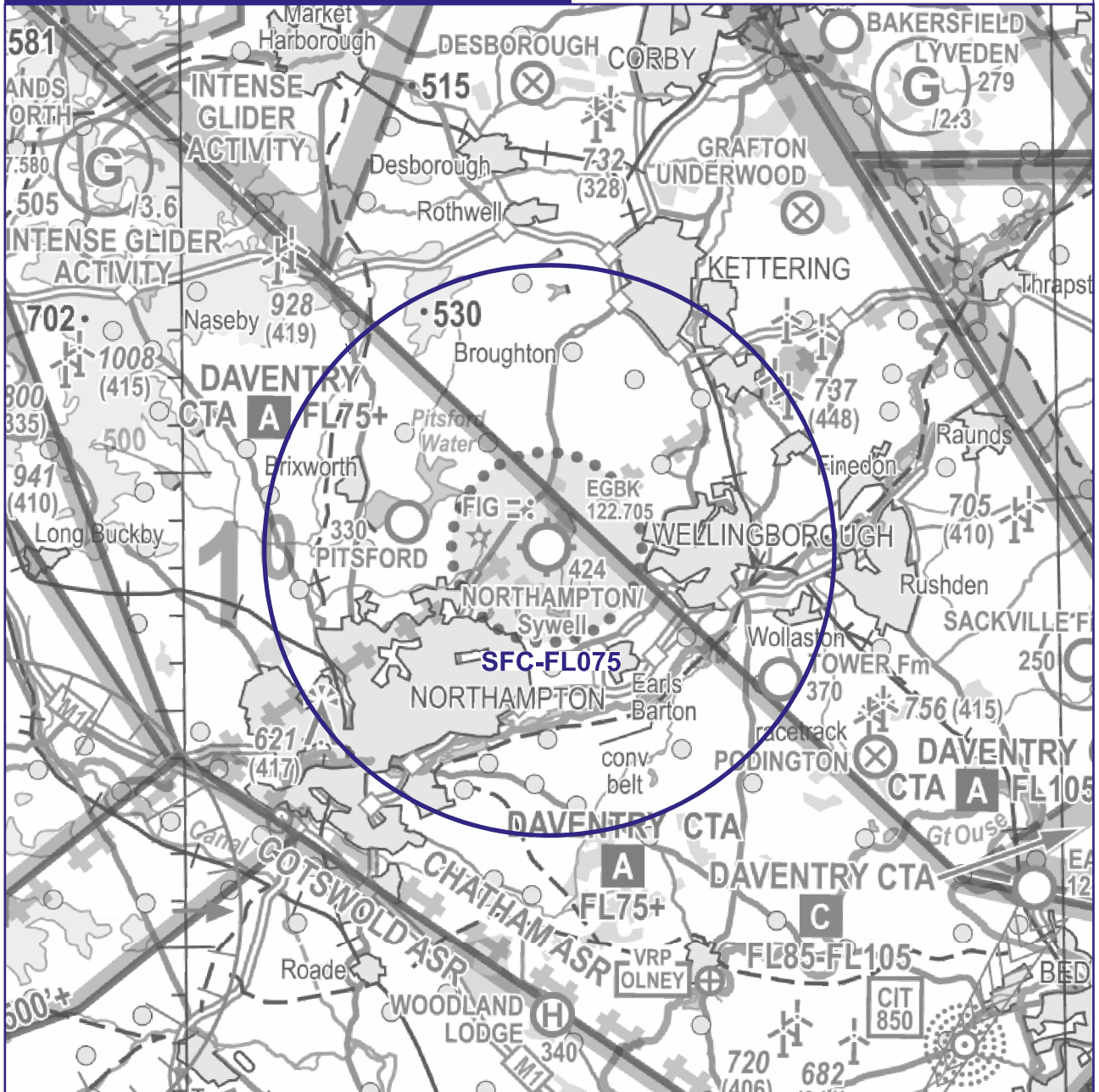
# SYWELL

5 0 5NM

NOTE: Aeronautical/topographical background detail shown from CAA VFR chart.  
See NATS AIS website for latest VFR amendments.

NOT FOR OPERATIONAL USE - PLANNING PURPOSES ONLY

SEE FULL DOCUMENT FOR DETAILS,  
DATES & ACTIVE TIMES



2024\_040\_08\_CR08430\_GRAPHIC DRAWN 22 MAR 24

RESTRICTED AREA (TEMPORARY)

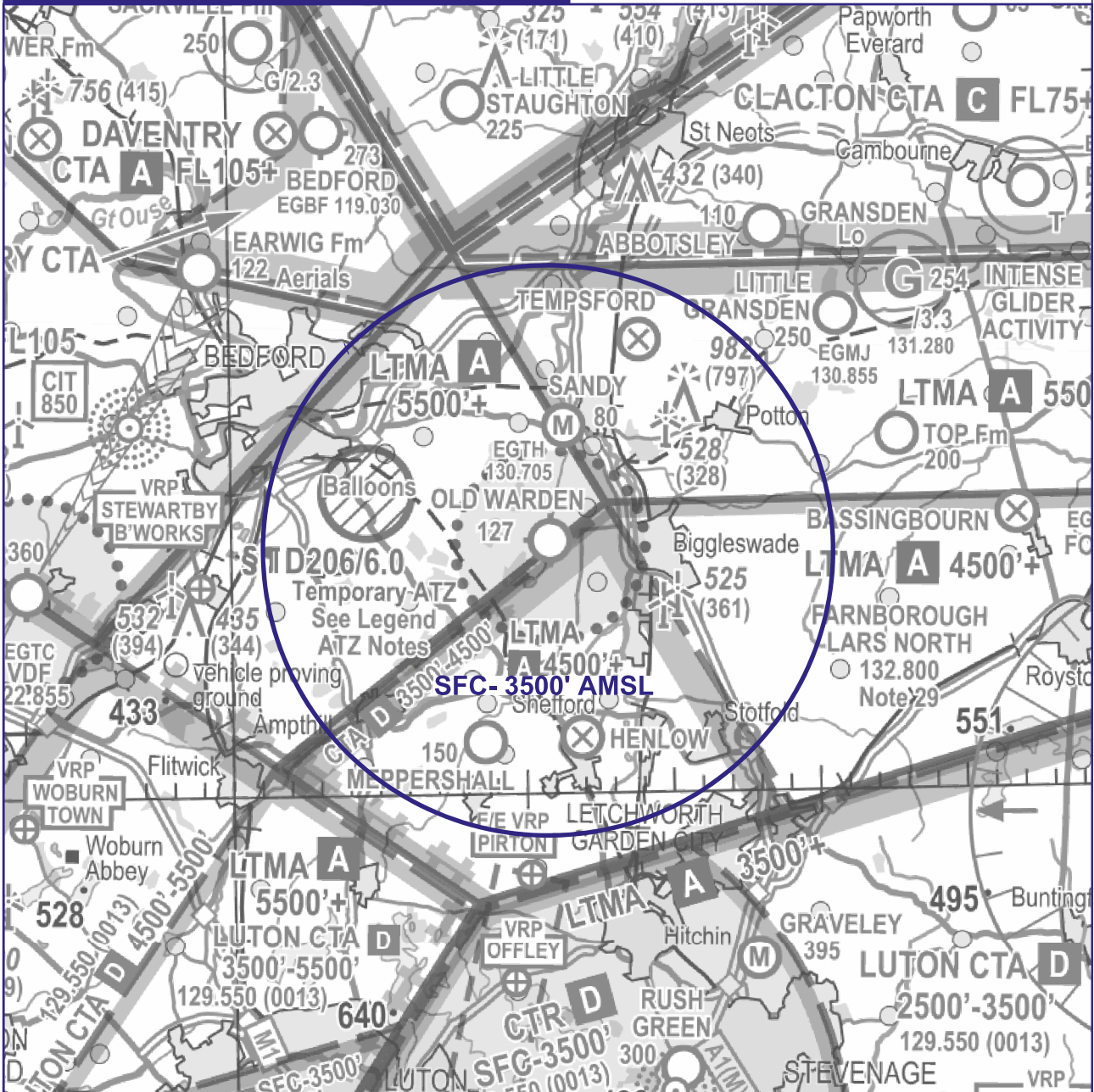
# OLD WARDEN

5 0 5NM

NOTE: Aeronautical/topographical background detail shown from CAA VFR chart.  
See NATS AIS website for latest VFR amendments.

NOT FOR OPERATIONAL USE - PLANNING PURPOSES ONLY

SEE FULL DOCUMENT FOR DETAILS,  
DATES & ACTIVE TIMES



2024\_040\_09\_CR08430\_GRAPHIC DRAWN 22 MAR 24

RESTRICTED AREA (TEMPORARY)

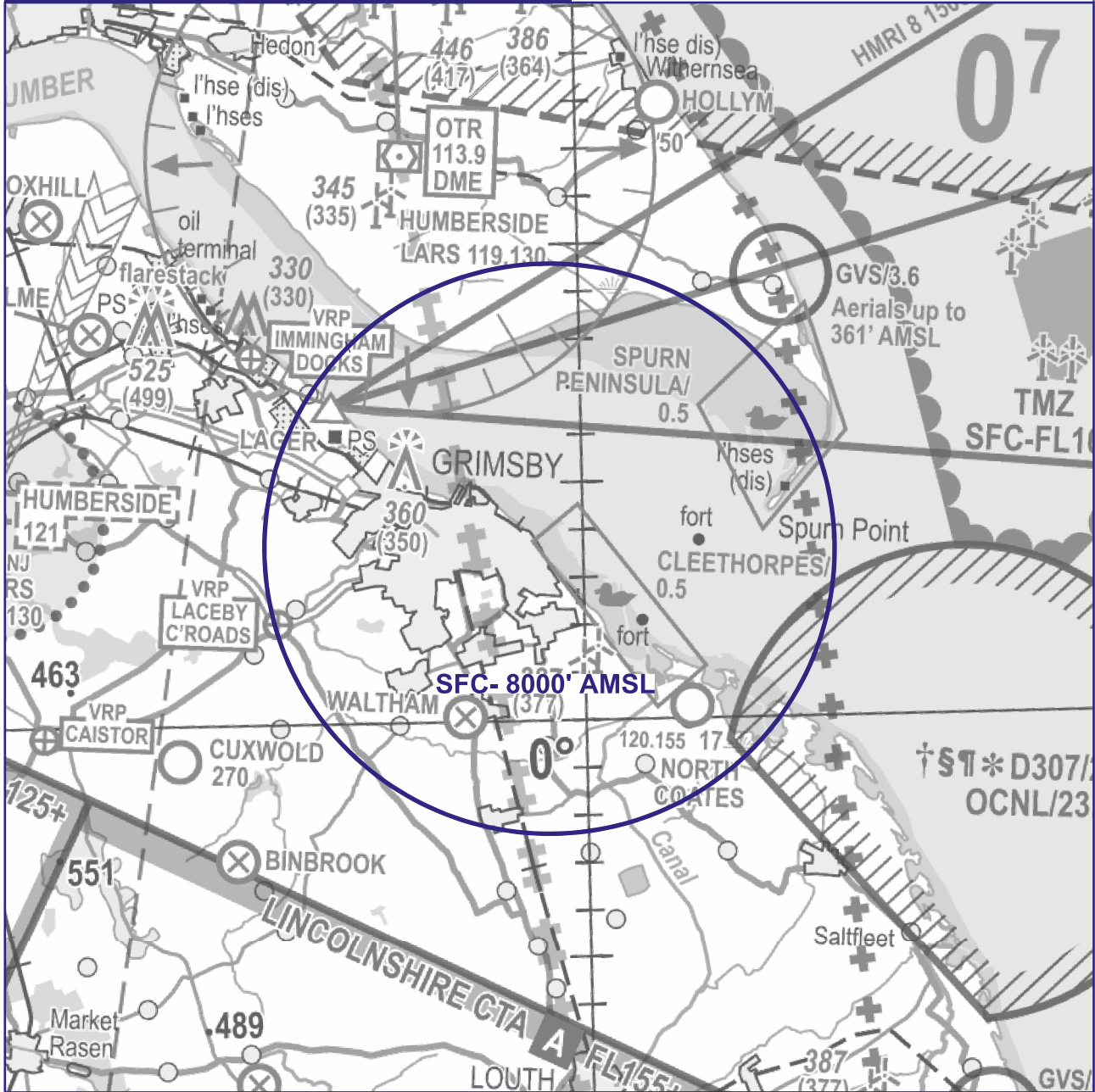
# CLEETHORPES

5 0 5NM

NOTE: Aeronautical/topographical background detail shown from CAA VFR chart.  
See NATS AIS website for latest VFR amendments.

NOT FOR OPERATIONAL USE - PLANNING PURPOSES ONLY

SEE FULL DOCUMENT FOR DETAILS,  
DATES & ACTIVE TIMES



2024\_040\_10\_CR08430\_GRAPHIC DRAWN 22 MAR 24

RESTRICTED AREA (TEMPORARY)

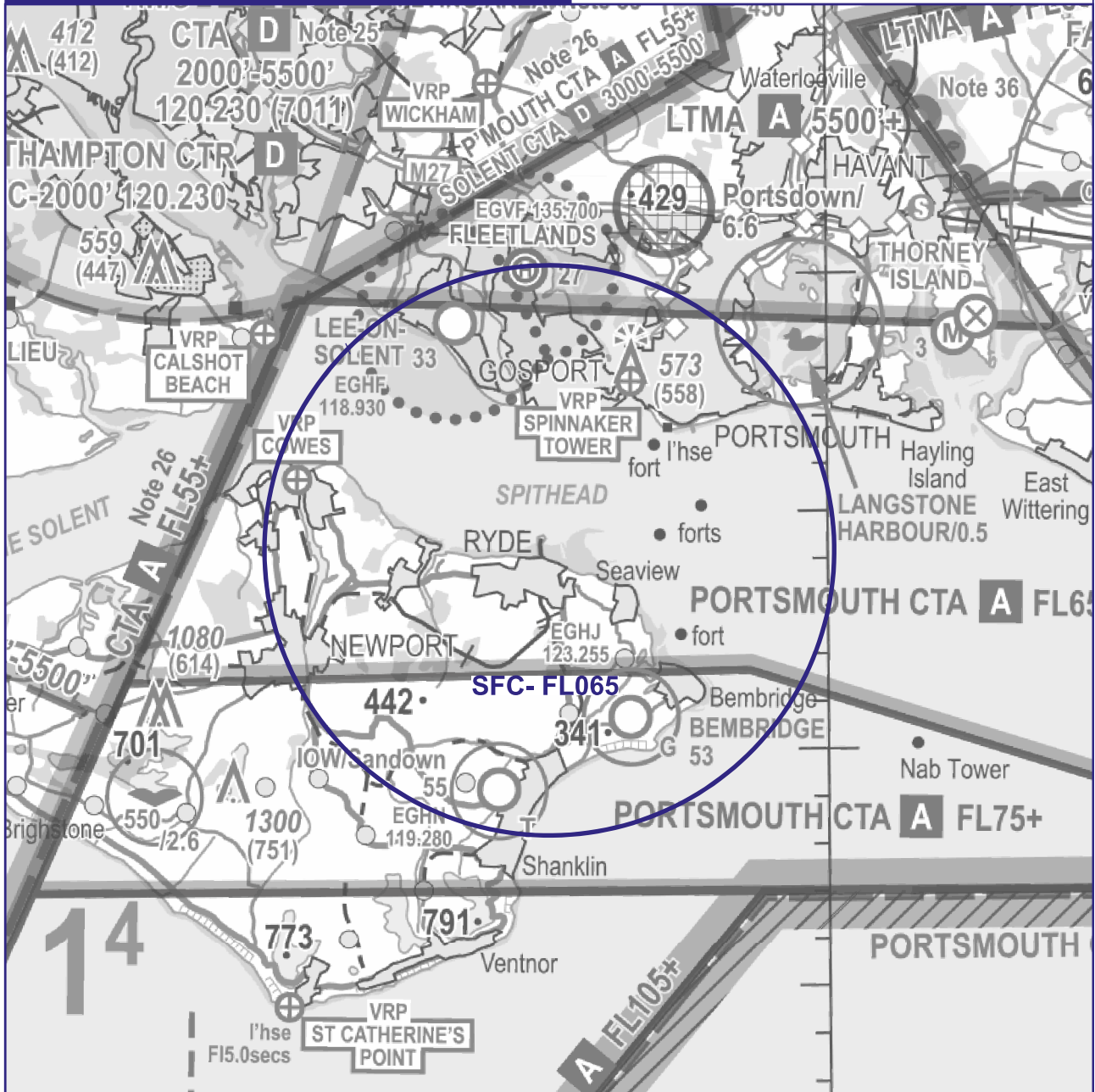
# ISLE OF WIGHT

5 0 5NM

NOTE: Aeronautical/topographical background detail shown from CAA VFR chart.  
See NATS AIS website for latest VFR amendments.

NOT FOR OPERATIONAL USE - PLANNING PURPOSES ONLY

SEE FULL DOCUMENT FOR DETAILS,  
DATES & ACTIVE TIMES



2024\_040\_11\_CR08430\_GRAPHIC DRAWN 22 MAR 24

RESTRICTED AREA (TEMPORARY)

# FOLKESTONE

5 0 5NM

NOTE: Aeronautical/topographical background detail shown from CAA VFR chart.  
See NATS AIS website for latest VFR amendments.

NOT FOR OPERATIONAL USE - PLANNING PURPOSES ONLY

SEE FULL DOCUMENT FOR DETAILS,  
DATES & ACTIVE TIMES



2024\_040\_12\_CR08430\_GRAPHIC DRAWN 22 MAR 24

RESTRICTED AREA (TEMPORARY)

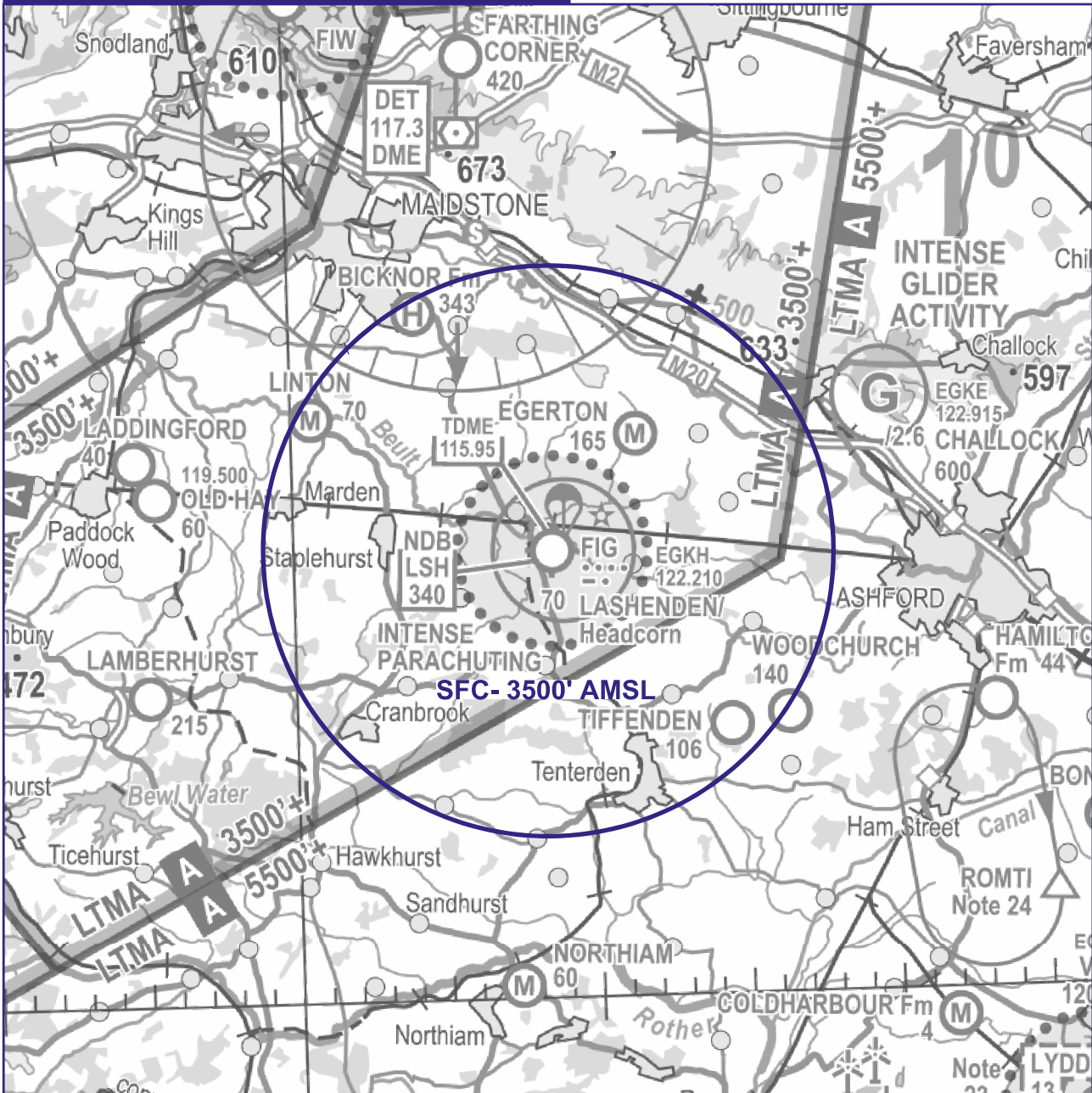
# HEADCORN

5 0 5NM

NOTE: Aeronautical/topographical background detail shown from CAA VFR chart.  
See NATS AIS website for latest VFR amendments.

NOT FOR OPERATIONAL USE - PLANNING PURPOSES ONLY

SEE FULL DOCUMENT FOR DETAILS,  
DATES & ACTIVE TIMES



2024\_040\_13\_CR08430\_GRAPHIC DRAWN 22 MAR 24



RESTRICTED AREA (TEMPORARY)

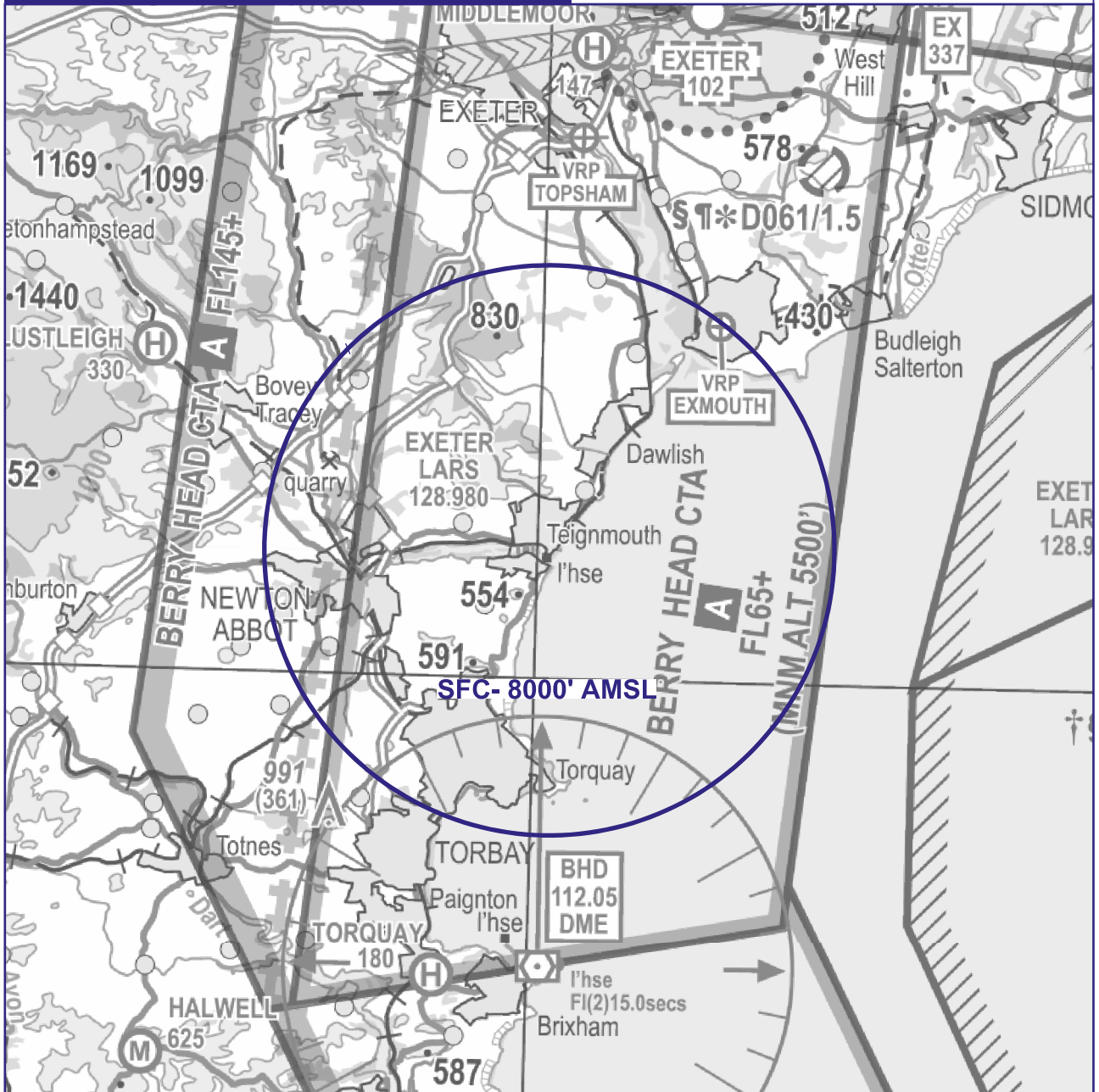
# TEIGNMOUTH

5 0 5NM

NOTE: Aeronautical/topographical background detail shown from CAA VFR chart.  
See NATS AIS website for latest VFR amendments.

NOT FOR OPERATIONAL USE - PLANNING PURPOSES ONLY

SEE FULL DOCUMENT FOR DETAILS,  
DATES & ACTIVE TIMES



2024\_040\_14\_CR08430\_GRAPHIC DRAWN 22 MAR 24

**RESTRICTED AREA (TEMPORARY)**

# SWANSEA

5 0 5NM

NOTE: Aeronautical/topographical background detail shown from CAA VFR chart.  
See NATS AIS website for latest VFR amendments.

NOT FOR OPERATIONAL USE - PLANNING PURPOSES ONLY

**SEE FULL DOCUMENT FOR DETAILS,  
DATES & ACTIVE TIMES**



2024\_040\_15\_CR08430\_GRAPHIC DRAWN 22 MAR 24

RESTRICTED AREA (TEMPORARY)

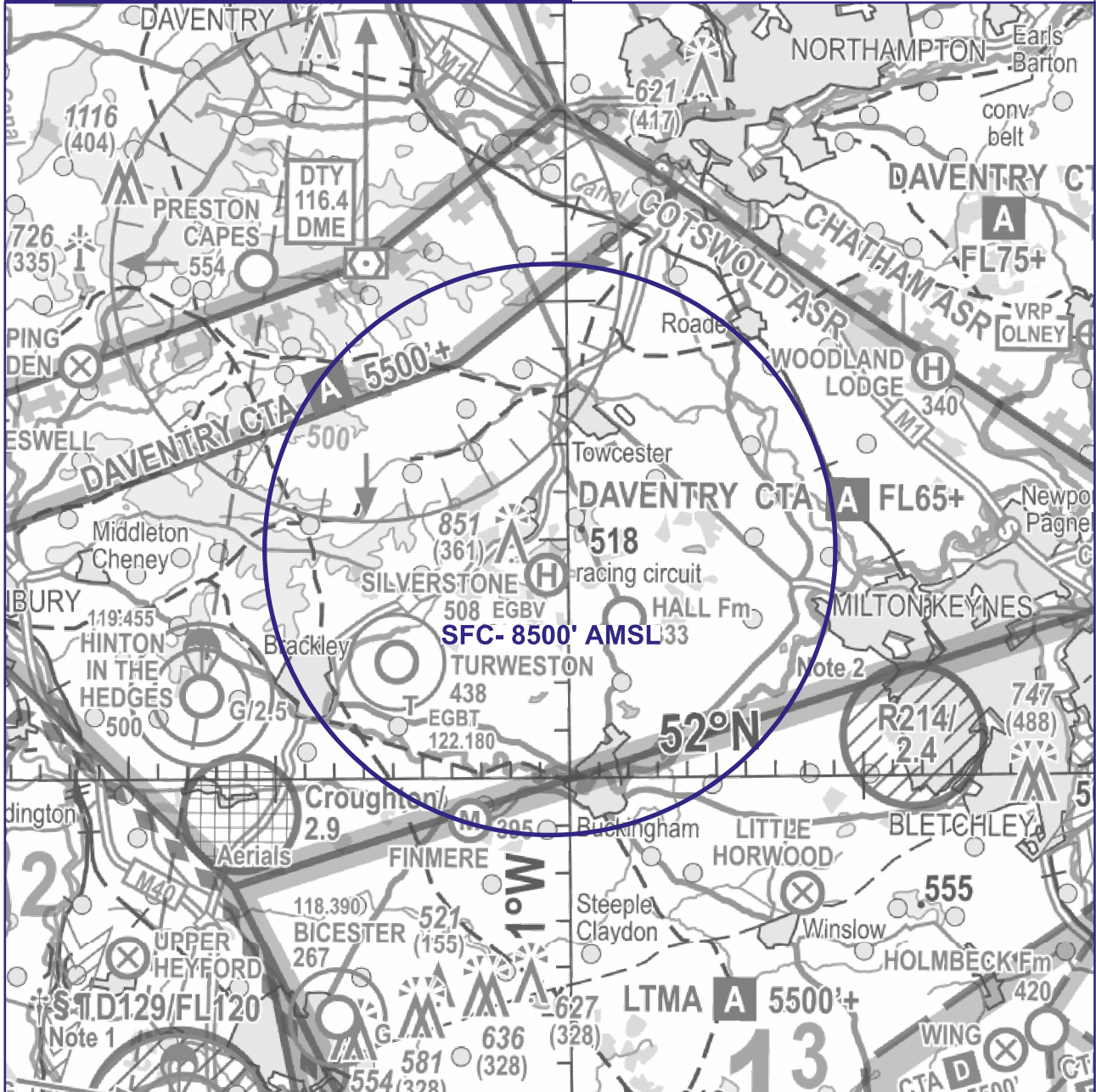
# SILVERSTONE

5 0 5NM

NOTE: Aeronautical/topographical background detail shown from CAA VFR chart.  
See NATS AIS website for latest VFR amendments.

NOT FOR OPERATIONAL USE - PLANNING PURPOSES ONLY

SEE FULL DOCUMENT FOR DETAILS,  
DATES & ACTIVE TIMES



2024\_040\_16\_CR08430\_GRAPHIC DRAWN 22 MAR 24

RESTRICTED AREA (TEMPORARY)

# GOODWOOD

5 0 5NM

NOTE: Aeronautical/topographical background detail shown from CAA VFR chart.  
See NATS AIS website for latest VFR amendments.

NOT FOR OPERATIONAL USE - PLANNING PURPOSES ONLY

SEE FULL DOCUMENT FOR DETAILS,  
DATES & ACTIVE TIMES



2024\_040\_17\_CR08430\_GRAPHIC DRAWN 22 MAR 24

RESTRICTED AREA (TEMPORARY)

# WADDINGTON

5 0 5NM

NOTE: Aeronautical/topographical background detail shown from CAA VFR chart.  
See NATS AIS website for latest VFR amendments.

NOT FOR OPERATIONAL USE - PLANNING PURPOSES ONLY

SEE FULL DOCUMENT FOR DETAILS,  
DATES & ACTIVE TIMES



2024\_040\_18\_CR08430\_GRAPHIC DRAWN 22 MAR 24

RESTRICTED AREA (TEMPORARY)

# SOUTHPORT

5 0 5NM

NOTE: Aeronautical/topographical background detail shown from CAA VFR chart.  
See NATS AIS website for latest VFR amendments.

NOT FOR OPERATIONAL USE - PLANNING PURPOSES ONLY

SEE FULL DOCUMENT FOR DETAILS,  
DATES & ACTIVE TIMES



2024\_040\_19\_CR08430\_GRAPHIC DRAWN 22 MAR 24

RESTRICTED AREA (TEMPORARY)

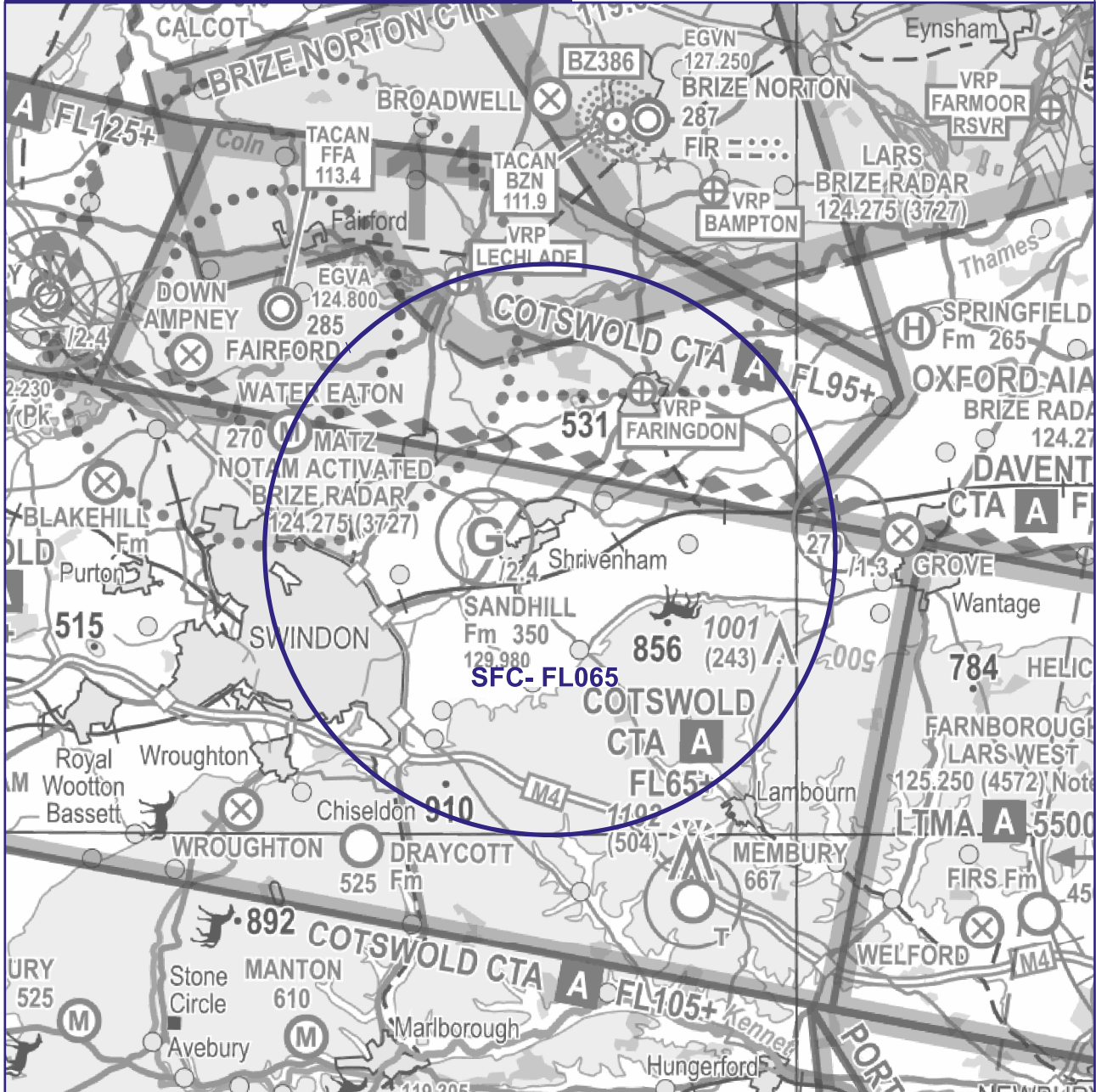
# SHRIVENHAM

5 0 5NM

NOTE: Aeronautical/topographical background detail shown from CAA VFR chart.  
See NATS AIS website for latest VFR amendments.

NOT FOR OPERATIONAL USE - PLANNING PURPOSES ONLY

SEE FULL DOCUMENT FOR DETAILS,  
DATES & ACTIVE TIMES



2024\_040\_20\_CR08430\_GRAPHIC DRAWN 22 MAR 24

**RESTRICTED AREA (TEMPORARY)**

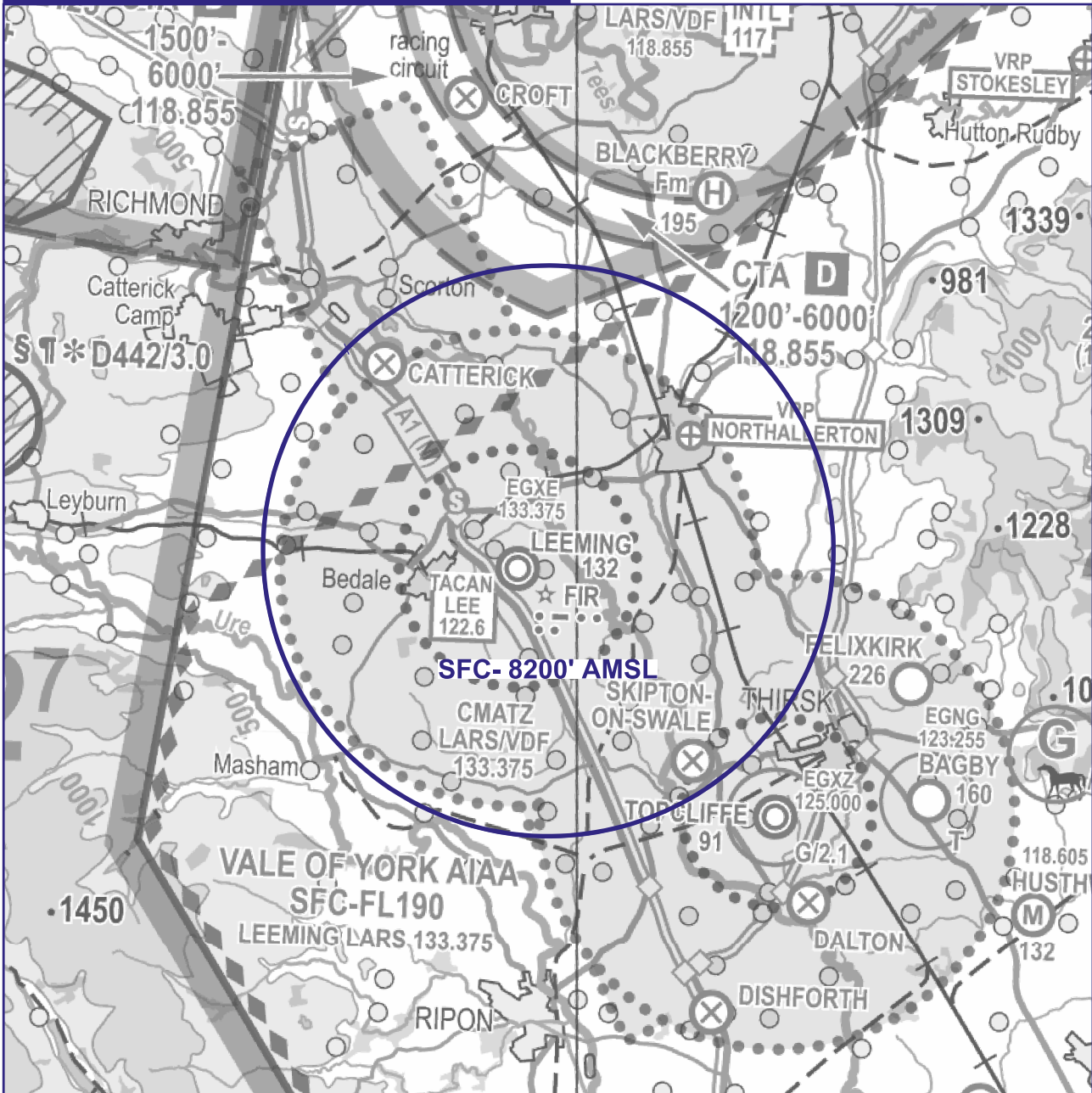
# LEEMING

5 0 5NM

NOTE: Aeronautical/topographical background detail shown from CAA VFR chart.  
See NATS AIS website for latest VFR amendments.

NOT FOR OPERATIONAL USE - PLANNING PURPOSES ONLY

**SEE FULL DOCUMENT FOR DETAILS,  
DATES & ACTIVE TIMES**



2024\_040\_21\_CR08430\_GRAPHIC DRAWN 22 MAR 24



# RESTRICTED AREA (TEMPORARY)

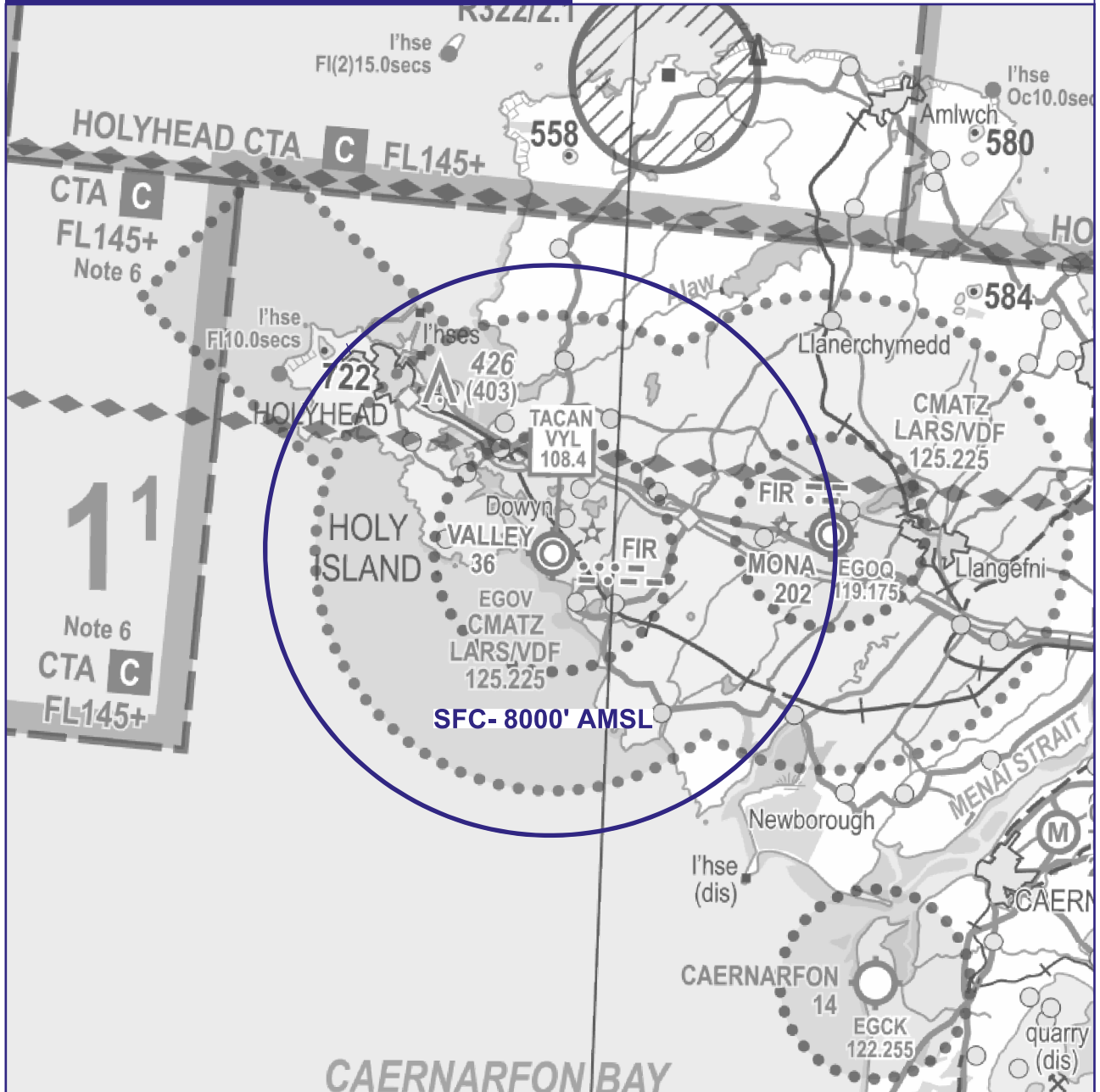
# VALLEY

5 0 5NM

NOTE: Aeronautical/topographical background detail shown from CAA VFR chart.  
See NATS AIS website for latest VFR amendments.

NOT FOR OPERATIONAL USE - PLANNING PURPOSES ONLY

SEE FULL DOCUMENT FOR DETAILS,  
DATES & ACTIVE TIMES



2024\_040\_22\_CR08430\_GRAPHIC DRAWN 22 MAR 24

RESTRICTED AREA (TEMPORARY)

# ODIHAM

5 0 5NM

NOTE: Aeronautical/topographical background detail shown from CAA VFR chart.  
See NATS AIS website for latest VFR amendments.

NOT FOR OPERATIONAL USE - PLANNING PURPOSES ONLY

SEE FULL DOCUMENT FOR DETAILS,  
DATES & ACTIVE TIMES



2024\_040\_23\_CR08430\_GRAPHIC DRAWN 22 MAR 24

RESTRICTED AREA (TEMPORARY)

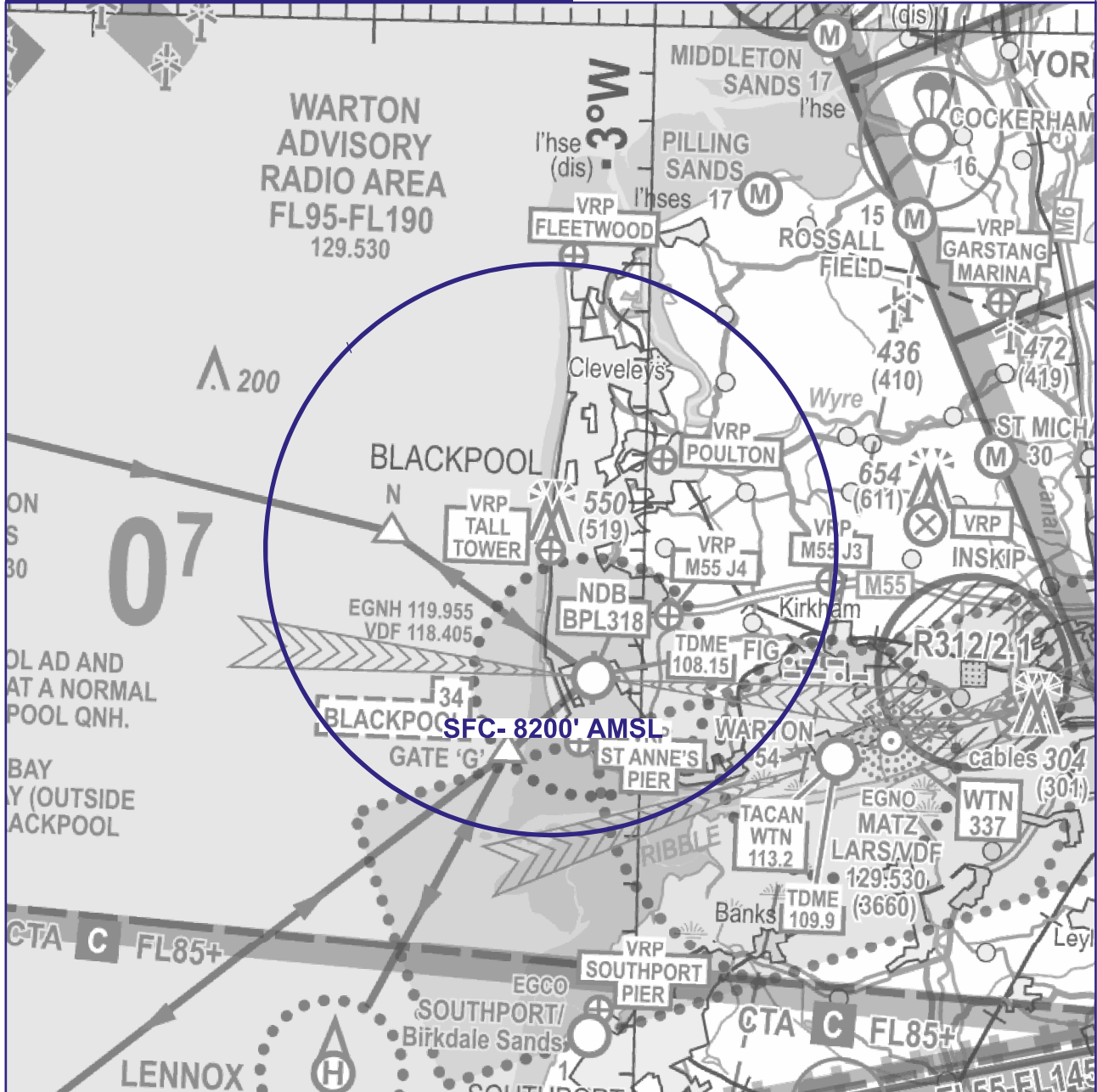
# BLACKPOOL

5 0 5NM

NOTE: Aeronautical/topographical background detail shown from CAA VFR chart.  
See NATS AIS website for latest VFR amendments.

NOT FOR OPERATIONAL USE - PLANNING PURPOSES ONLY

SEE FULL DOCUMENT FOR DETAILS,  
DATES & ACTIVE TIMES



2024\_040\_24\_CR08430\_GRAPHIC DRAWN 22 MAR 24

RESTRICTED AREA (TEMPORARY)

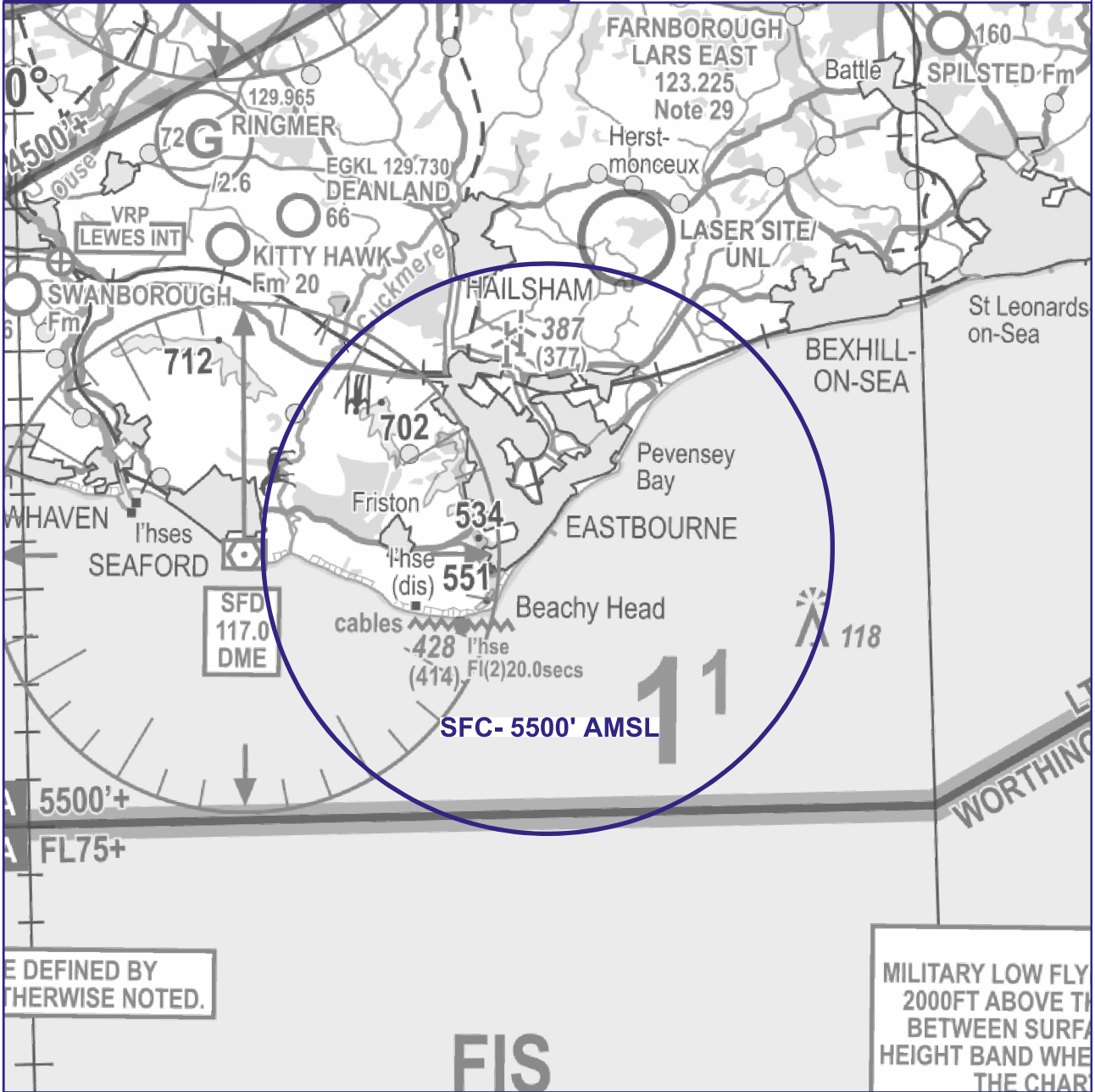
# EASTBOURNE

5 0 5NM

NOTE: Aeronautical/topographical background detail shown from CAA VFR chart.  
See NATS AIS website for latest VFR amendments.

NOT FOR OPERATIONAL USE - PLANNING PURPOSES ONLY

SEE FULL DOCUMENT FOR DETAILS,  
DATES & ACTIVE TIMES



2024\_040\_25\_CR08430\_GRAPHIC DRAWN 22 MAR 24