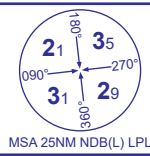


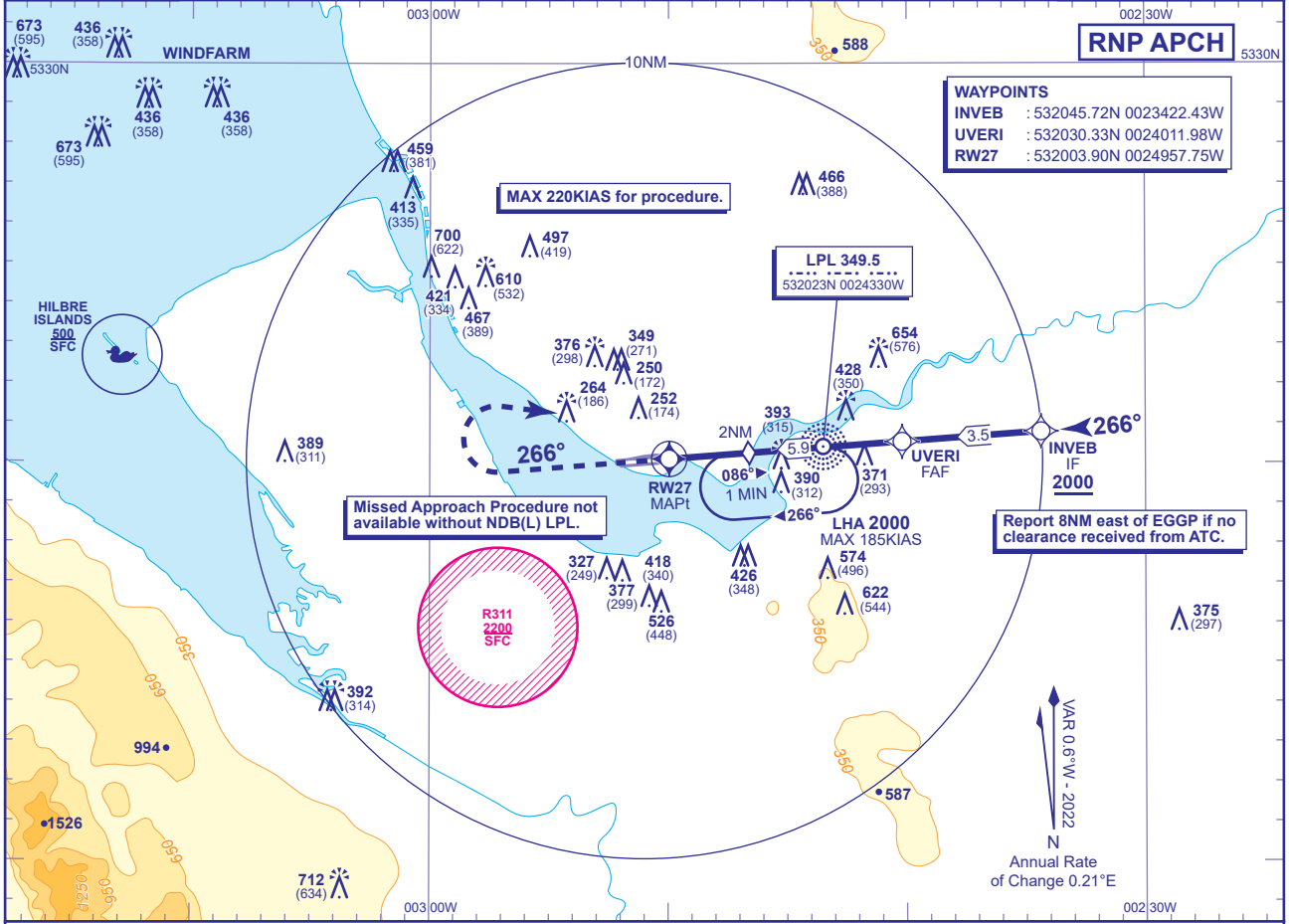
INSTRUMENT APPROACH CHART - ICAO

LIVERPOOL RNP



APP	119.855	LIVERPOOL APPROACH	AD ELEVATION	81
TWR	126.355	LIVERPOOL TOWER	THR ELEVATION	78
	121.955	LIVERPOOL GROUND	OBSTACLE ELEVATION	712 AMSL (634) (ABOVE THR)
RAD	118.455, 119.855	LIVERPOOL RADAR		
ATIS	124.330	LIVERPOOL INFORMATION	BEARINGS ARE MAGNETIC	

MIN TEMP	-15°C
TRANSITION ALTITUDE	5000

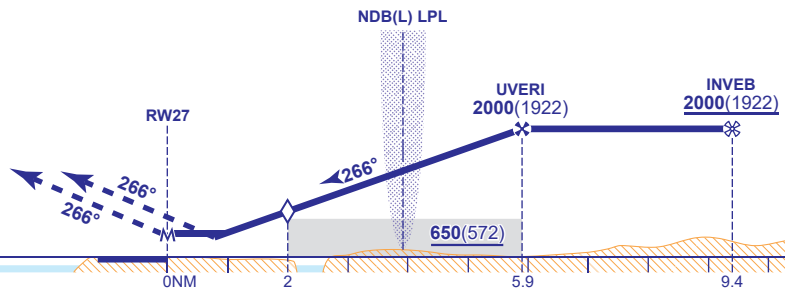


RECOMMENDED PROFILE VERTICAL PATH ANGLE 3.0° (LNAV 5.2%), 320FT/NM

NM to RW27	5	4	3	2 (SDF)	1
ALT(HGT)	1720(1642)	1400(1322)	1090(1012)	770(692)	450(372)

TCH 54 Arrival not below 2500 or higher MSA.

MAPt (LNAV) RW27
Climb straight ahead to 1500, then turn right to NDB(L) LPL climbing to 2000 or as directed.



Aircraft Category		A	B	C	D	Rate of descent	G/S KT	160	140	120	100	80
		LNAV/VNAV	390(312)	390(312)	390(312)		390(312)	FT/MIN	850	740	640	530
OCA (OCH)	LNAV	460(382)	460(382)	460(382)	460(382)							
VM(C)OCA (OCH AAL)	Total Area	550(469)	670(589)	930(849)	970(889)							

- NOTE 1** Missed approach shall be converted to a conventional missed approach upon reaching 1500.
NOTE 2 Procedure is only available when Liverpool RADAR is operational.
NOTE 3 Pilots to request RNP approach on first call.

CHANGE (6/21): MAG VAR. MAG TRACKS. OCA(OCH) LNAV CAT A,B,C,D MINIMA REVISED. VM(C)OCA (OCH AAL) CAT D MINIMA REVISED.