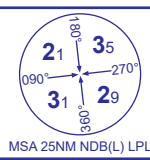


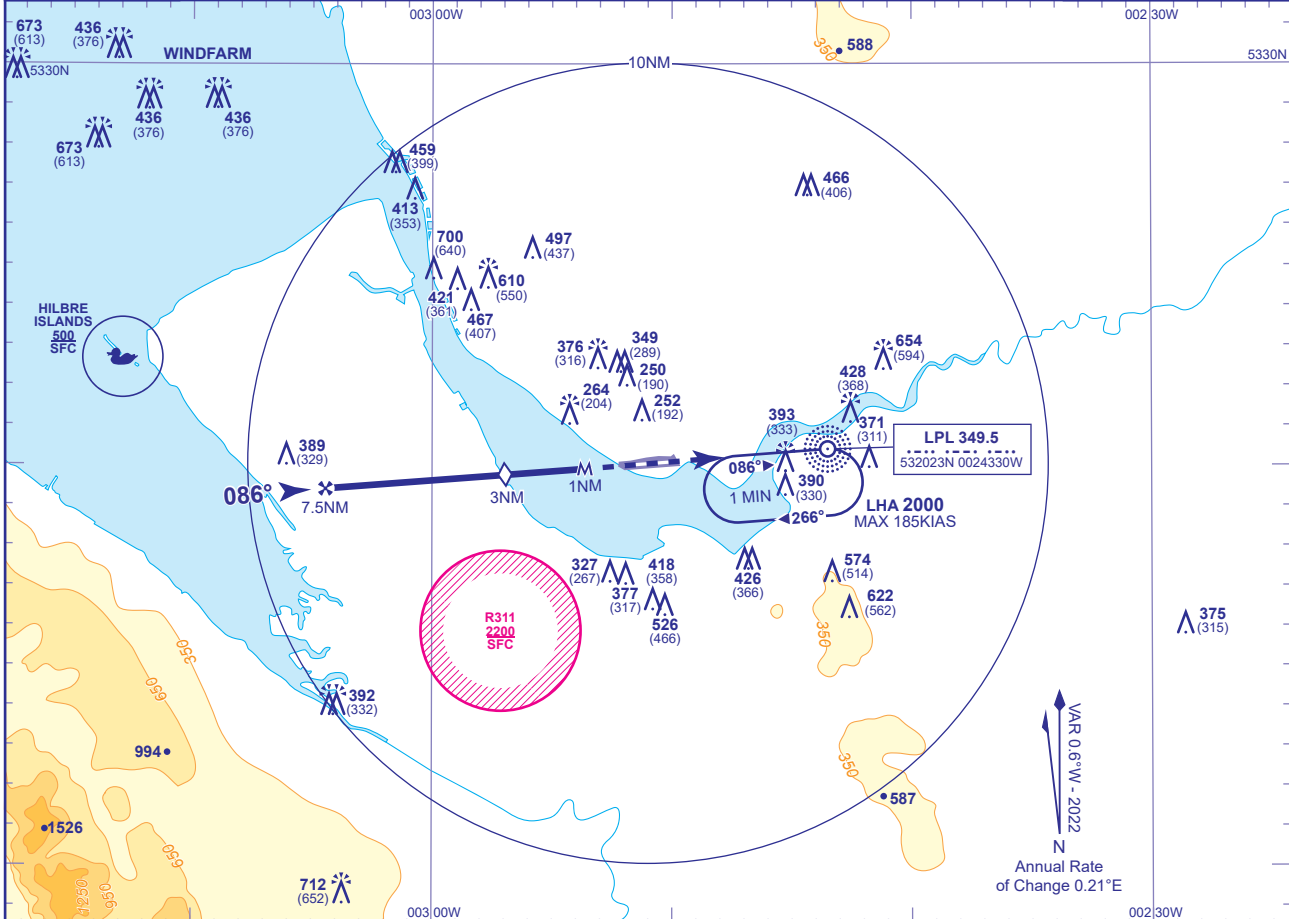
INSTRUMENT APPROACH CHART - ICAO

LIVERPOOL SRA RTR 2NM RWY 09 (ACFT CAT A,B,C,D)



APP	119.855	LIVERPOOL APPROACH	AD ELEVATION	81
TWR	126.355	LIVERPOOL TOWER	THR ELEVATION	60
	121.955	LIVERPOOL GROUND	OBSTACLE ELEVATION	712 AMSL (652) (ABOVE THR)
RAD	118.455, 119.855	LIVERPOOL RADAR		
ATIS	124.330	LIVERPOOL INFORMATION	BEARINGS ARE MAGNETIC	

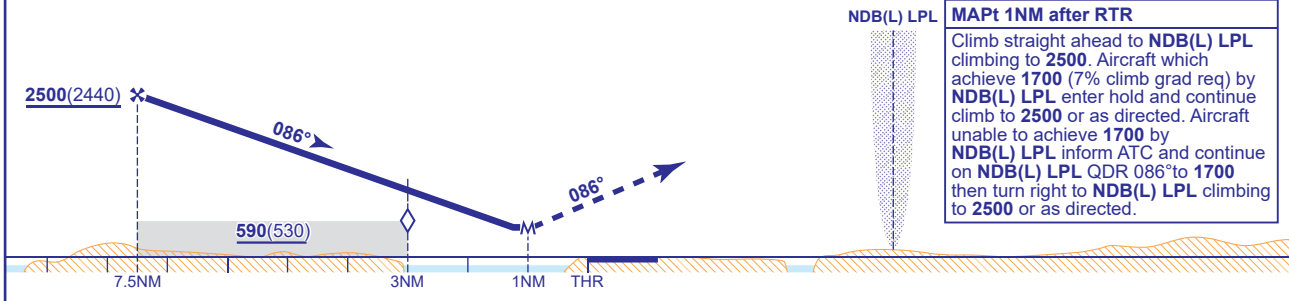
TRANSITION ALTITUDE
5000



RADAR ADVISORY HEIGHTS Gradient 5.24%, 318FT/NM

NM	7.0	6.0	5.0	4.0	3.0 (SDF)	2.0
ALT(HGT)	2340(2280)	2020(1960)	1710(1650)	1390(1330)	1070(1010)	750(690)

Initial and intermediate approach as directed by radar.



Aircraft Category	A	B	C	D	Rate of descent FT/MIN	G/S KT	160	140	120	100	80
OCA (OCH) Procedure	560(500)	560(500)	560(500)	560(500)			850	740	640	530	420
VM(C)OCA (OCH AAL) Total Area	550(469)	670(589)	930(849)	970(889)	RTR to MAPt	MIN:SEC	0:22	0:25	0:30	0:36	0:45

CHANGE (6/21): MAG VAR. MAG TRACKS. OCA(OCH) CAT A,B,C,D MINIMA REVISED. VM(C)OCA (OCH AAL) CAT D MINIMA REVISED.