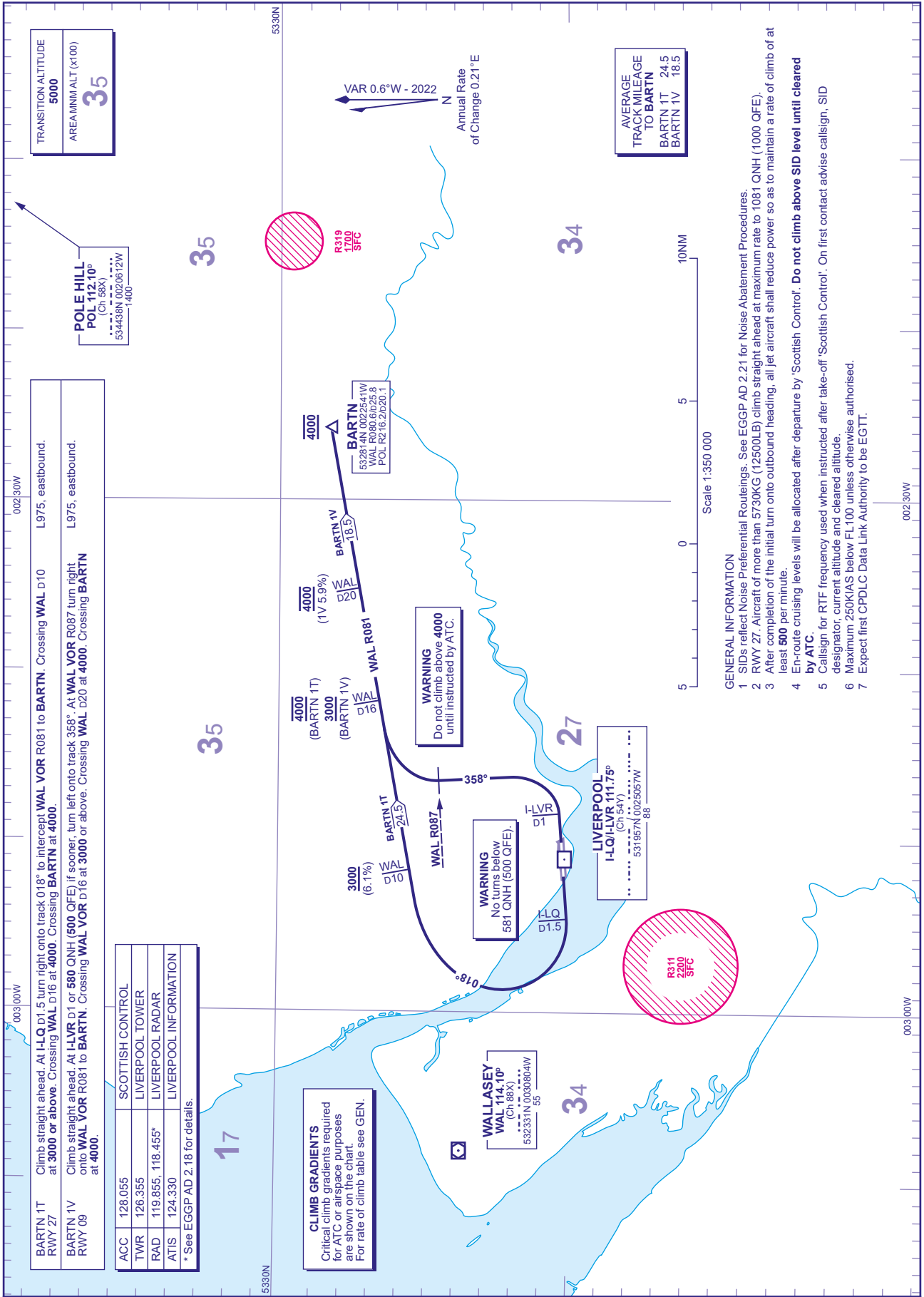


# STANDARD CHART - INSTRUMENT (SID) - ICAO

DISTANCES IN NAUTICAL MILES  
BEARINGS, TRACKS AND RADIALS ARE MAGNETIC  
ALTITUDES AND ELEVATIONS ARE IN FEET

# LIVERPOOL BARTN 1T 1V



TRANSITION ALTITUDE  
**5000**

AREA MMAL T (x100)  
**35**

**POLE HILL**  
POL 112.10°  
(Ch 58X)  
.....  
534438N 0020612W  
1400

BARTN 1T  
RWY 27  
Climb straight ahead. At I-LQ D1.5 turn right onto track 018° to intercept **WAL VOR** R081 to **BARTN**. Crossing **WAL** D10 L975, eastbound.  
at **3000** or above. Crossing **WAL** D16 at **4000**. Crossing **BARTN** at **4000**.

BARTN 1V  
RWY 09  
Climb straight ahead. At I-LVR D1 or 580 QNH (500 QFE) if sooner, turn left onto track 358°. At **WAL VOR** R087 turn right onto **WAL VOR** R081 to **BARTN**. Crossing **WAL** D20 at **3000** or above. Crossing **BARTN** at **4000**. Crossing **BARTN** at **4000**.

SCOTTISH CONTROL	
ACC	128.055
TWR	126.355
RAD	119.855, 118.455*
ATIS	124.330
LIVERPOOL INFORMATION	

\* See EGGP AD 2.18 for details.

**CLIMB GRADIENTS**  
Critical climb gradients required for ATC or airspace purposes are shown on the chart. For rate of climb table see GEN.

**WALLASEY**  
WAL 114.10°  
(Ch 88X)  
.....  
532331N 003004W  
55

**LIVERPOOL**  
I-LQ/I-LVR 111.75°  
(Ch 54Y)  
.....  
531957N 0025057W  
86

AVERAGE TRACK MILEAGE TO BARTN  
BARTN 1T 24.5  
BARTN 1V 18.5



**GENERAL INFORMATION**  
1 SIDs reflect Noise Preferential Routings. See EGGP AD 2.21 for Noise Abatement Procedures.  
2 RWY 27. Aircraft of more than 5730KG (12500LB) climb straight ahead at maximum rate to 1081 QNH (1000 QFE).  
3 After completion of the initial turn onto outbound heading, all jet aircraft shall reduce power so as to maintain a rate of climb of at least **500** per minute.  
4 En-route cruising levels will be allocated after departure by 'Scottish Control'. **Do not climb above SID level until cleared by ATC.**  
5 Callsign for RTF frequency used when instructed after take-off 'Scottish Control'. On first contact advise callsign, SID designator, current altitude and cleared altitude.  
6 Maximum 250KIAS below FL100 unless otherwise authorised.  
7 Expect first CPDLC Data Link Authority to be EGTG.

VAR 0.6°W - 2022  
Annual Rate of Change 0.21°E

**BARTN**  
532874N 0022541W  
WAL R090.60255.8  
POL R216.21020.1

**WARNING**  
Do not climb above 4000 until instructed by ATC.

**WARNING**  
No turns below 581 QNH (500 QFE).

R311  
2200  
SFC

R319  
1700  
SFC