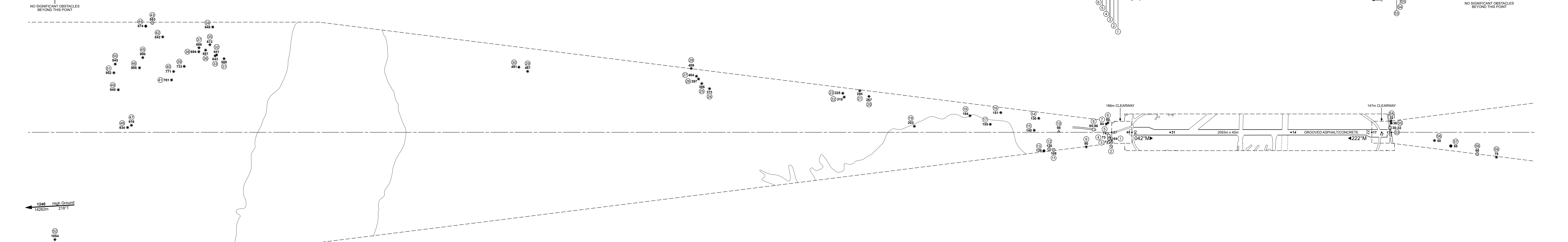
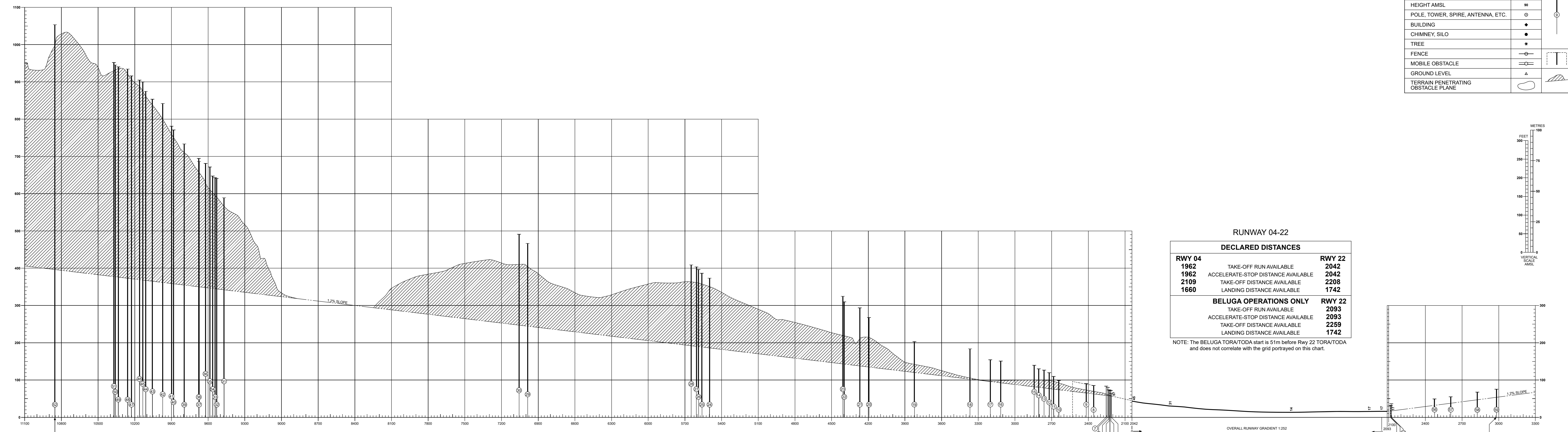


MAGNETIC VARIATION 1°W (2022)

LEGEND

	PLAN	PROFILE
IDENTIFICATION NUMBER	⊙	⊙
HEIGHT AMSL	⊕	⊕
POLE, TOWER, SPIRE, ANTENNA, ETC.	⊖	⊖
BUILDING	◆	◆
CHIMNEY, SILO	●	●
TREE	★	★
FENCE	—	—
MOBILE OBSTACLE	⊖	⊖
GROUND LEVEL	△	△
TERRAIN PENETRATING OBSTACLE PLANE	⊖	⊖



Obstacle Number	Survey Number	Description	Latitude	Longitude	Altitude (M)	Altitude (ft)
1	8474	FENCE	531011.0476N	0025919.5123W	19.36	63.52
2	6886	LAMP POST	531010.3067N	0025918.2442W	21.93	71.95
3	6885	LAMP POST	531010.4653N	0025919.2221W	22.22	72.90
4	6884	LAMP POST	531010.6108N	0025920.1297W	22.25	73.00
5	727	MOBLE OBST	531011.0924N	0025921.2098W	22.47	73.72
5a	726	MOBLE OBST	531010.9911N	0025921.2215W	22.49	73.79
6	10179	TREE	531013.1219N	0025925.7022W	24.43	80.15
7	10180	TREE	531012.5922N	0025925.7801W	25.51	83.69
8	3070	MOBLE OBST	531009.1249N	0025927.6229W	25.98	85.24
8a	3071	MOBLE OBST	531008.2404N	0025929.2990W	26.78	87.86
9	11061	TREE	531004.6487N	0025923.9797W	27.55	90.39
8b	3072	MOBLE OBST	531007.3177N	0025931.0210W	27.56	90.42
8c	3073	MOBLE OBST	531006.4544N	0025932.5645W	28.32	92.91
8d	3074	MOBLE OBST	531005.2666N	0025934.4408W	29.32	96.19
10	9519	SPOIL HEAP	531001.9099N	0025937.1979W	30.01	98.46
11	6759	ELECTRICITY POLE	530957.5831N	0025932.4341W	33.36	109.45
12	6752	LAMP POST	530956.8453N	0025933.9409W	36.47	119.85
13	8884	HOUSE CHIMNEY	530955.5038N	0025934.8767W	38.55	126.48
14	11022	TREE	531000.1064N	0025947.1951W	39.42	129.33
14a	10174	TREE	530959.8572N	0025947.5162W	39.63	130.02
15	11027	TREE	530957.1334N	0025944.5454W	42.57	139.67
16	10335	TREE	530953.5135N	0030000.0655W	46.04	151.05
17	10331	TREE	530949.4069N	0025959.1978W	47.10	154.53
18	10173	TREE	530946.8200N	0030007.8934W	55.97	183.63
19	10410	TREE	530933.8978N	0030020.4932W	61.90	203.08
20	10357	TREE	530929.9963N	0030043.5108W	81.52	267.45
21	10356	TREE	530929.1615N	0030048.0293W	89.56	293.83
22	10360	TREE	530924.9340N	0030050.4278W	94.46	309.91
23	11443	TREE	530925.3300N	0030052.1103W	98.95	324.64
24	10609	TREE	530859.4967N	0030132.0870W	113.84	373.49
25	10611	TREE	530858.8321N	0030136.0372W	117.75	386.32

Obstacle Number	Survey Number	Description	Latitude	Longitude	Altitude (M)	Altitude (ft)
26	10612	TREE	530858.9760N	0030138.4863W	120.89	395.59
27	10613	TREE	530859.0543N	0030140.0162W	122.59	402.20
27a	10483	TREE	530859.0138N	0030140.0301W	123.05	403.71
28	10484	TREE	530859.3419N	0030144.0893W	124.57	408.69
29	10707	TREE	530826.1566N	0030230.3485W	142.28	466.80
30	10706	TREE	530825.1464N	0030234.2641W	144.34	473.56
30a	10705	TREE	530824.9078N	0030233.9356W	149.64	490.94
31	10980	TREE	530727.6849N	0030402.1156W	179.50	588.91
32	11514	TREE	530726.8754N	0030405.4853W	195.33	640.85
33	10981	TREE	530726.4033N	0030405.8213W	198.05	648.21
34	11510	TREE	530730.9069N	0030415.8690W	197.36	647.51
35	11513	TREE	530727.2742N	0030410.8136W	204.69	671.56
36	11515	TREE	530725.4804N	0030410.2896W	207.57	681.00
37	10983	TREE	530724.5670N	0030412.9351W	209.11	686.06
38	10984	TREE	530723.8473N	0030411.6959W	211.88	694.49
39	10990	TREE	530718.4033N	0030411.0392W	223.51	733.30
40	10993	TREE	530715.3804N	0030412.4002W	235.00	771.00
41	10996	TREE	530713.5131N	0030410.1770W	238.09	781.14
42	10989	TREE	530719.2020N	0030427.0150W	256.65	842.03
43	4200	TELE POLE	530719.5775N	0030434.6753W	260.09	853.31
44	4201	BUILDING	530717.6809N	0030435.4790W	265.70	871.72
44a	4202	BUILDING	530717.6963N	0030435.6757W	266.54	874.48
45	10995	TREE	530711.6359N	0030425.8888W	274.28	899.87
46	10999	TREE	530709.2170N	0030423.4458W	275.76	904.72
47	11011	TREE	530657.6444N	0030406.6957W	279.18	915.94
48	11012	TREE	530656.4893N	0030407.0879W	284.80	934.38
49	10747	TREE	530701.1742N	0030422.2675W	286.64	940.42
50	10742	TREE	530705.0115N	0030431.6864W	288.12	945.28
51	10744	TREE	530703.2267N	0030429.1944W	290.16	951.97
52	10763	TREE	530622.5399N	0030350.8276W	321.11	1053.51

Obstacle Number	Survey Number	Description	Latitude	Longitude	Altitude (M)	Altitude (ft)
53	9887	BLAST FENCE	531108.6581N	0025802.5274W	9.27	30.41
53a	9881	BLAST FENCE	531108.7565N	0025802.3577W	9.69	31.79
54	10054	TREE	531110.0154N	0025804.5759W	9.79	32.12
55	10060	TREE	531109.6855N	0025803.6994W	11.12	36.48
56	11155	TREE	531115.2902N	0025745.4417W	15.09	49.51
57	10115	SLO	531117.6068N	0025738.9215W	16.82	55.18
58	8716	POWERPOLE	531121.4993N	0025728.5817W	20.63	67.68
59	10066	TREE	531124.7858N	0025721.9884W	22.97	75.36

