

AIP SUPPLEMENT 035/2024

UNITED KINGDOM



UK Aeronautical Information Services
NATS Swanwick
Sopwith Way
Southampton SO31 7AY
aissupervisor@nats.co.uk
<http://www.nats.aero/ais>
darren.dupre@ports.je (Content - EGJJ AD)

Date Of Publication

4 Apr 2024

Notes

- (a) All times are UTC.
- (b) References are to the UK AIP.
- (c) Information, where applicable, should also be used to amend appropriate charts.



JERSEY (EGJJ) - ALIAS UTM FLIGHT TRIALS - RESTRICTED AIRSPACE (TEMPORARY)

1 In accordance with Article 47 of the Air Navigation (Jersey) Law 2014. The Director of Civil Aviation has established Restricted Airspace (Temporary) as follows:

2 When notified as active by NOTAM during the following dates:

Monday 8 April - Friday 28 June 2024.

3 ALIAS RA(T)1

Surface to 2000 FT AMSL within an area bounded by the following lateral limits:

491612N 0021451W - 491915N 0021450W - 491916N 0020540W - 491612N 0020540W - 491612N 0021451W.

This restriction does not apply to:

- a) Any aircraft operating under a permission issued by the Director of Civil Aviation in relation to participation in the ALIAS flight trials; or
- b) Any aircraft flying for the purpose of Search and Rescue or for the purpose of saving life.

Manned and Autonomous unmanned aircraft may be operating within this area.

4 ALIAS RA(T)2

Surface to 1000 FT AMSL within an area bounded by the following lateral limits:

491514N 0020950W - 491612N 0021125W - 491612N 0020540W - 491514N 0020824W - 491514N 0020950W.

This restriction does not apply to:

- a) Any aircraft operating under a permission issued by the Director of Civil Aviation in relation to participation in the ALIAS flight trials; or
- b) Any aircraft flying for the purpose of Search and Rescue or for the purpose of saving life.

Unmanned aircraft may be operating within this area.

RESTRICTED AREA (TEMPORARY)

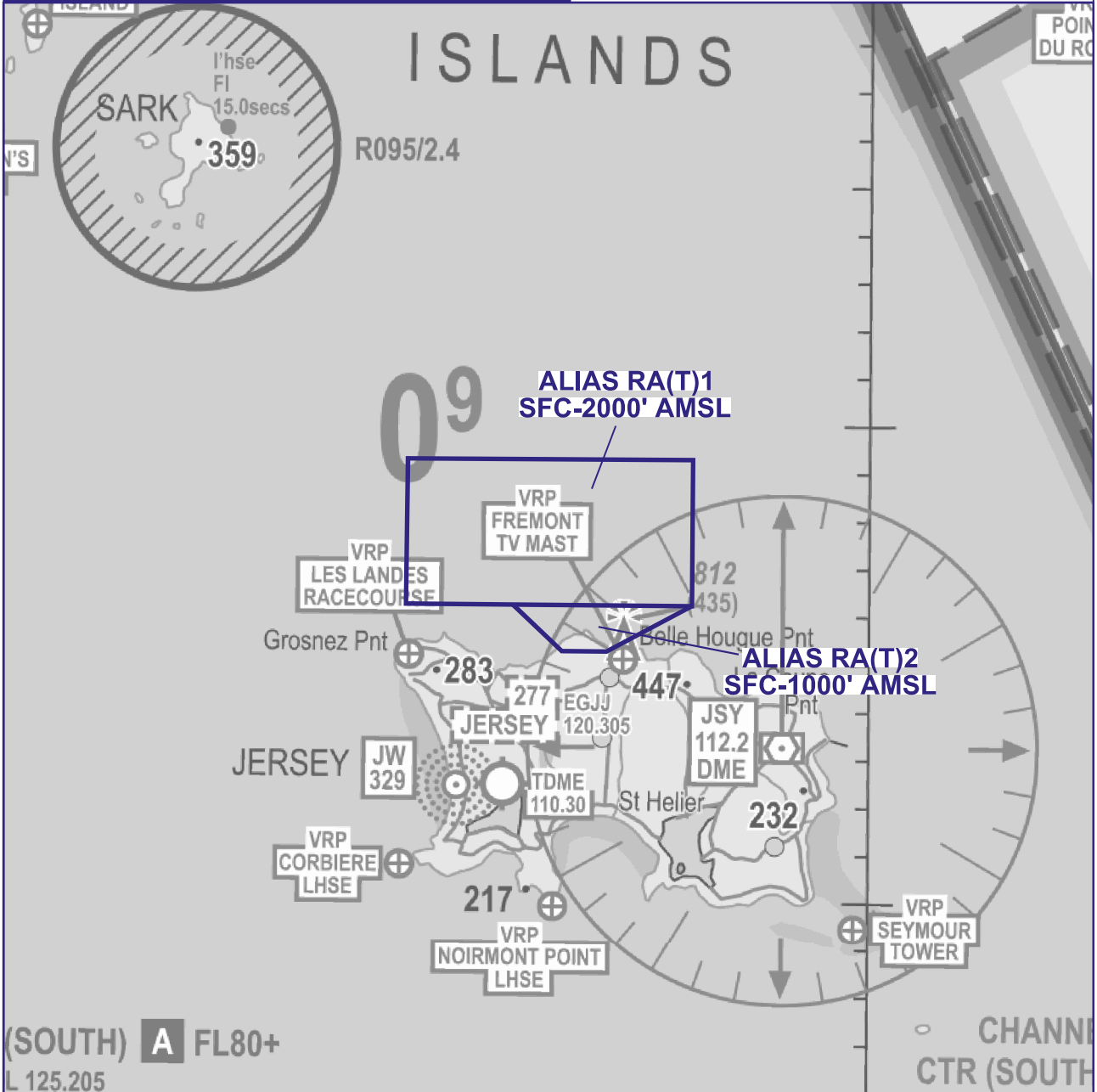
JERSEY ALIAS UTM FLIGHT TRIALS

5 0 5NM

NOTE: Aeronautical/topographical background detail shown from CAA VFR chart.
See NATS AIS website for latest VFR amendments.

NOT FOR OPERATIONAL USE - PLANNING PURPOSES ONLY

SEE FULL DOCUMENT FOR DETAILS,
DATES & ACTIVE TIMES



2024_021_CR08289_GRAPHIC DRAWN 26 FEB 24