

AIP SUPPLEMENT 034/2024

UNITED KINGDOM



UK Aeronautical Information Services
NATS Swanwick
Sopwith Way
Southampton SO31 7AY
aissupervisor@nats.co.uk
<http://www.nats.aero/ais>
07795-670187 (Content - EGKK)

Date Of Publication

4 Apr 2024

Notes

- (a) All times are UTC.
- (b) References are to the UK AIP.
- (c) Information, where applicable, should also be used to amend appropriate charts.



LONDON GATWICK AIRPORT (EGKK) - NEW TAXIWAY ECHO - REPLACES SUP 012/2024

1 Introduction

Work is in progress and continues into 2025 to construct an additional section of taxiway between Runway 08L/26R and Taxiway Juliet. The new taxiway will be designated Taxiway Echo and is shown on the chart below.

2 Programme

Taxiway Echo is due to become operational during 2025. Exact timings will be confirmed in Airport Notices, NOTAMs and ATIS messages as appropriate.

The physical construction of the taxiway was completed in February 2024, however it will remain closed until work to upgrade the taxiway lighting control system has taken place in 2025.

3 Operational Implications

Taxiway Echo is closed and unfit for the movement of aircraft. The red stop bar will be illuminated H24.

Works may be required at various times, details will be contained in NOTAMs as appropriate.

4 Completion Of Works

On completion of the works and AGL upgrade in 2025, Taxiway Echo will become fully operational with all appropriate markings, signage, and lighting. Specific timings will be confirmed by NOTAM.

5 Further Information

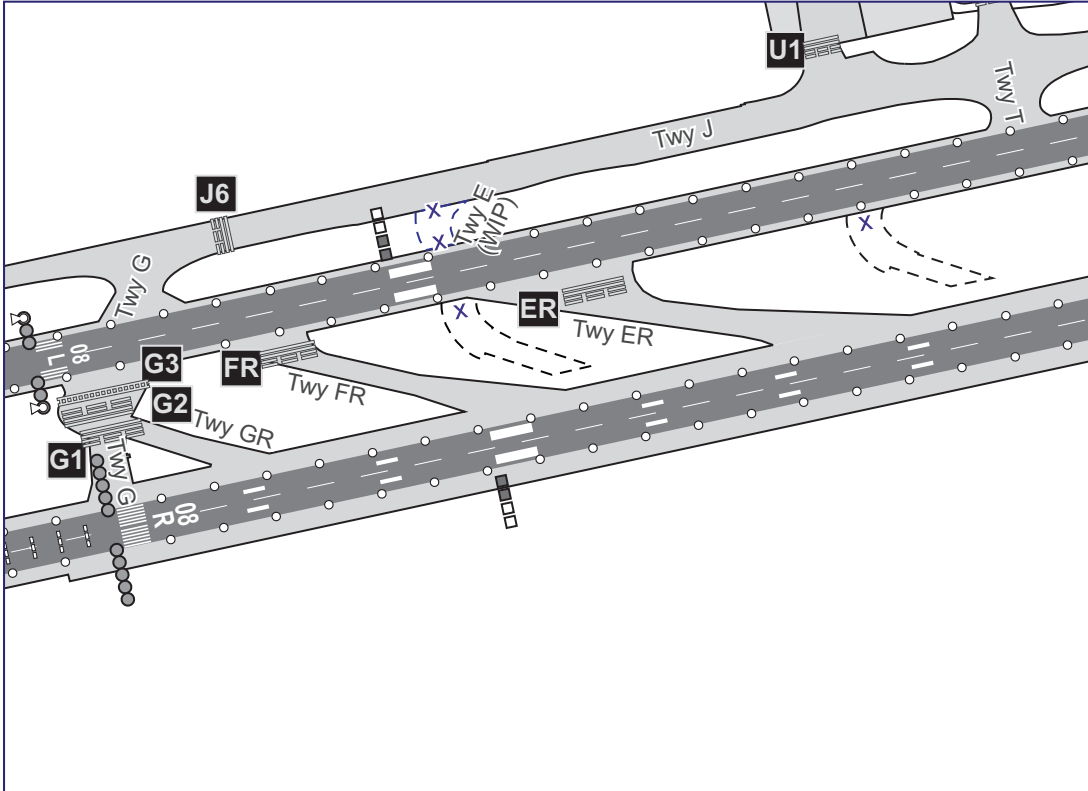
Further information will be contained in NOTAMs, Airport Notices and messages on ATIS as appropriate. The UK AIP will be amended in due course.

6 Enquiries

For any enquiries regarding these works contact:

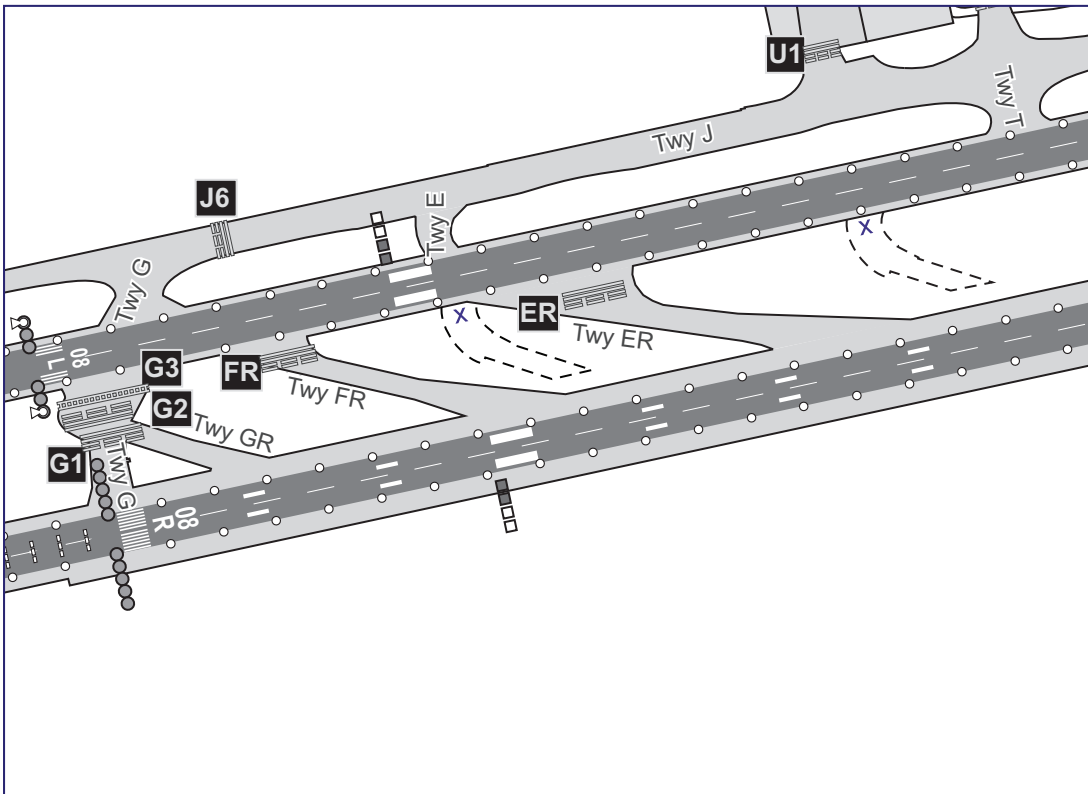
Office Hours:	Aerodrome Project Integration Lead	07795-670187 emma.crewdson@gatwickairport.com
Out Of Office Hours:	Aerodrome Operations Manager	07803-120115

LAYOUT PRIOR TO OPENING OF TAXIWAY ECHO



2024_018_CR08285_1_EGKK TWY E_GRAPHIC DRAWN 23FEB24

LAYOUT AFTER OPENING OF TAXIWAY ECHO



2024_018_CR08285_2_EGKK TWY E_GRAPHIC DRAWN 23FEB24